



## Lovelace Road

Surbiton, KT6 6NF

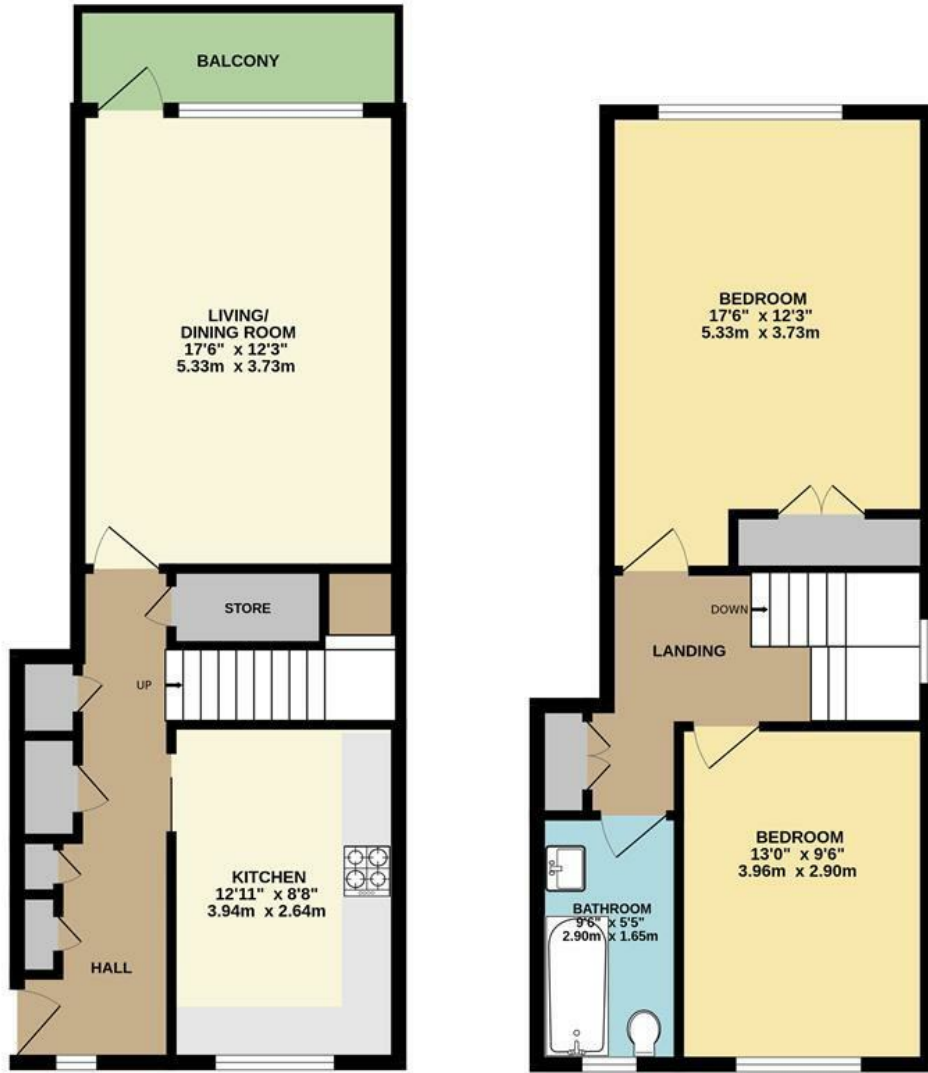
Guide Price £475,000

A superb split-level flat moments from Surbiton town centre and station. The property offers spacious accommodation of over 950 sq ft arranged across two floors. There is a generous kitchen, large living room to the rear with access to a balcony which overlooks the stunning and well maintained communal gardens. The second floor provides two large double bedrooms and the family bathroom. The property is situated in a popular tree-lined residential street which is only a short walk away from Surbiton town centre with it's mainline station and a plethora of local amenities. Offered to market chain free.

Material Info: Electricity/Water/Sewerage/Gas: Mains. Broadband: FTTC. Mobile Coverage Indoor: Variable Outdoor: Good. Council Tax Kingston Band D.

- Split Level
- Living Room with Balcony
- Two Double Bedrooms
- Seperate Kitchen
- Share of Freehold
- Spacious Accomodation
- Stunning Communal Gardens
- Family Bathroom
- Popular Location
- Chain Free

# Floor Plan

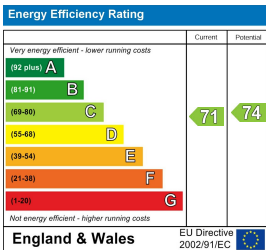


SECOND FLOOR FLAT

MARLBOROUGH GARDENS, SURBITON  
 INTERNAL FLOOR AREA (APPROX.) 980 sq ft/ 91.0 sq m

Whilst every attempt has been made to ensure the accuracy of this floor plan, measurement of doors, windows, rooms and any other items are approximate and no responsibility is taken for any error, omission or mis-statement. Made with Metropix © 2026.

## Energy Efficiency Graph



These particulars, whilst believed to be accurate are set out as a general outline only for guidance and do not constitute any part of an offer or contract. Intending purchasers should not rely on them as statements of representation of fact, but must satisfy themselves by inspection or otherwise as to their accuracy. No person in this firm's employment has the authority to make or give any representation or warranty in respect of the property.