

Riverside Court Rosemary Lane - Asking Price £95,000

Halstead CO9 1FD

shires

Estate & Letting Agents



"Consistently providing outstanding service to our clients"

Asking Price £95,000

The Property

Nestled in the town of Halstead, this ground floor apartment on Rosemary Lane offers a perfect retreat for those aged over 55. With one bedroom, this property is designed to provide comfort and convenience for its residents. The apartment features a welcoming reception room, ideal for relaxation or entertaining guests. One of the standout features of this residence is its proximity to the town centre, allowing easy access to local shops, cafes, and amenities. This makes it an excellent choice for those who appreciate the vibrancy of community life while enjoying the tranquillity of a retirement setting. Residents will also benefit from a communal lounge, fostering a sense of community and providing a space to socialise with neighbours. This property is not just a home; it is a lifestyle choice, offering a harmonious blend of independence and community living. Whether you are looking to downsize or seeking a peaceful environment to enjoy your retirement, this apartment on Rosemary Lane is a wonderful opportunity not to be missed.

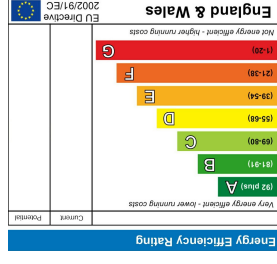
Please be aware that images of the property may have been digitally enhanced, edited, or staged using artificial intelligence, and may not reflect the current presentation or furnishings.

Features

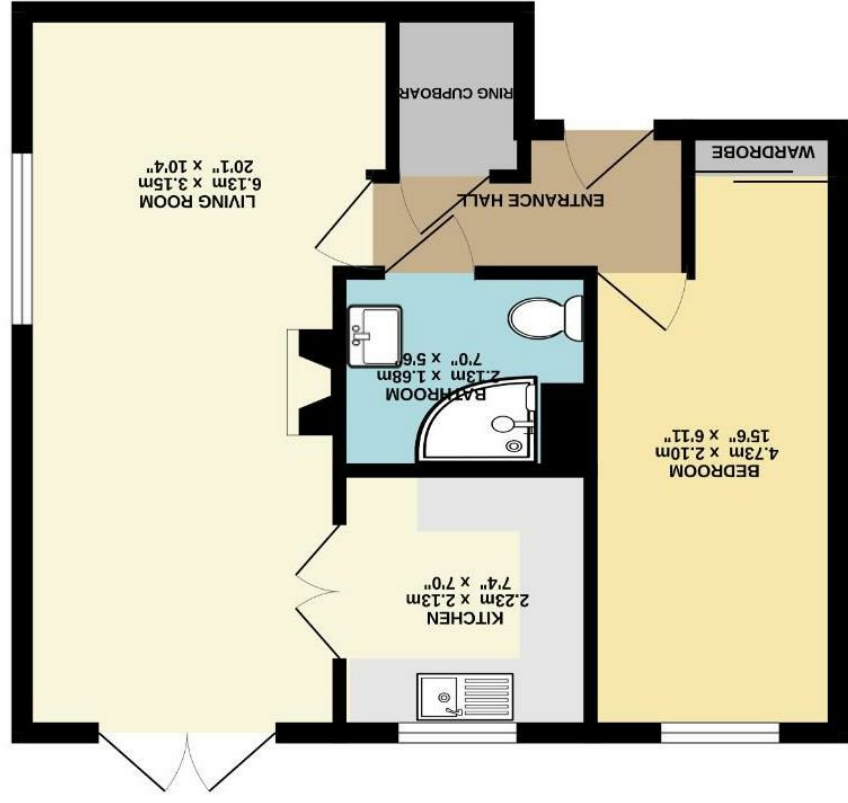
- ONE BEDROOM GROUND FLOOR FLAT
- OVER 55's
- CLOSE TO TOWN
- RESIDENTS PARKING
- COMMUNAL LOUNGE FOR RESIDENTS
- LAUNDRY ROOM FOR RESIDENTS
- SHOWER ROOM
- LOUNGE/ DINER
- AVAILABLE TO VIEW NOW
- NO ONWARD CHAIN



These sales particulars have been produced as a general guide only and we would draw to your attention that we have not carried out a detailed Survey of the property nor have we tested services, appliances or specific fittings. Whilst measurements and statements given within the details are provided in good faith, their accuracy should not be relied upon. If there are any points about which you may be uncertain or would like further clarification, we would suggest that you telephone this office and speak to our staff who will endeavour to assist you.



Whilst every attempt has been made to ensure the accuracy of the floorplan contained here, measurements of rooms, corridors, alcoves, fireplaces, windows, doors, and furniture are given as an approximate guide only. The floor plan is for illustrative purposes only and should not be used as such for any contract or for statement. This plan is for illustrative purposes only and should not be used as such for any contract or for statement. The services, systems and appliances shown have not been tested and no guarantee is given as to their operation or reliability.



17 High Street, Halstead, Essex, CO9 2AA
 T: 01787 479988
 E: halstead@shiresstateagents.co.uk