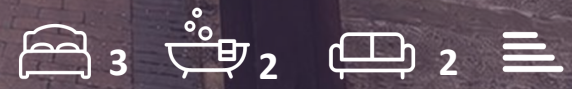




Rothschild Road, Leighton Buzzard

£525,000



## Rothschild Road, Leighton Buzzard

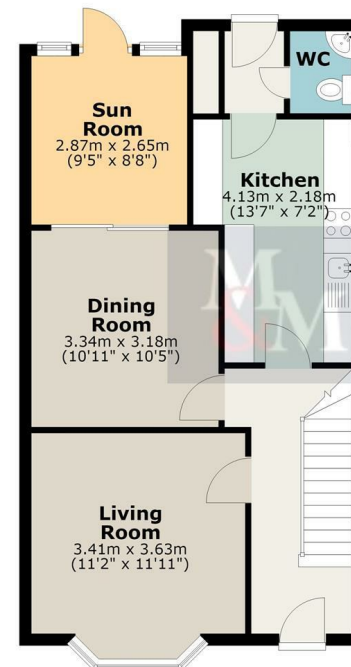
- Three-bedroom semi-detached family home
- Located on the sought-after Rothschild Road in Linslade
- Spacious bay-fronted living room
- Separate dining room with sliding doors to sun room
- Kitchen with access to rear garden
- Downstairs W/C
- Large driveway providing ample off-road parking
- Gated side access leading to detached single garage
- Long rear garden with paved seating area and lawn
- Three garden sheds offering excellent storage



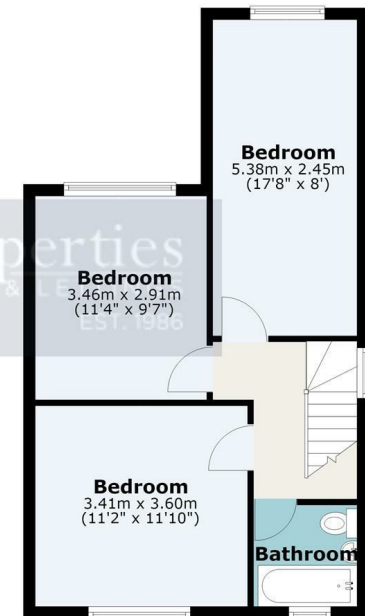
### Floor Plan



Ground Floor



First Floor



### Viewing

Please contact our Leighton Buzzard Office on 01525 377733.  
If you wish to arrange a viewing appointment for this property or require further information.

IMPORTANT: Whilst we aim to make our details accurate and reliable, if there is any point of particular concern to you, please contact the office. The apparatus, equipment, fittings and services have not been checked and therefore it is in the purchaser's interest to establish the working condition of the appliance included. Personal items such as furnishings which may be shown in the photographs are not included in the asking price. No survey has been carried out by M & M Properties. Measurements have a tolerance of +/- 3". Please note that this floorplan has not been drawn to scale and is therefore for room layout purposes only. It does not constitute or form part of a contract. Doors may be hung in opposite directions.