



OVER 60?

Secure this property
for up to **59% less!**

Price

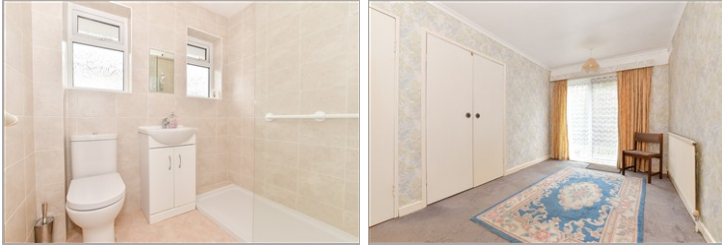
£275,000

Freehold

3x  1x  1x 

**Rectory Drive, Wootton
Bridge, Ryde, Isle of
Wight, PO33**

Pittis 
Helping you move forwards



Main features

- **Spacious detached bungalow with private rear garden**
- **In need of some upgrading throughout**
- **Situated within walking distance to all amenities and transport links**
- **Good sized lounge with electric fire**
- **Ample parking along with a quiet location**

Accommodation

GROUND FLOOR

Entrance Hallway

Lounge : 18'7 x 11'8 (5.67m x 3.56m)

Kitchen : 11'6 x 10'8 (3.51m x 3.25m)

Cloakroom

Shower Room

Bedroom 1 : 13'9 x 8'4 (4.19m x 2.54m)

Bedroom 2 : 12'3 x 10'1 (3.74m x 3.08m)

Bedroom 3 : 9'0 x 7'5 (2.75m x 2.26m)

OUTSIDE

Front Garden

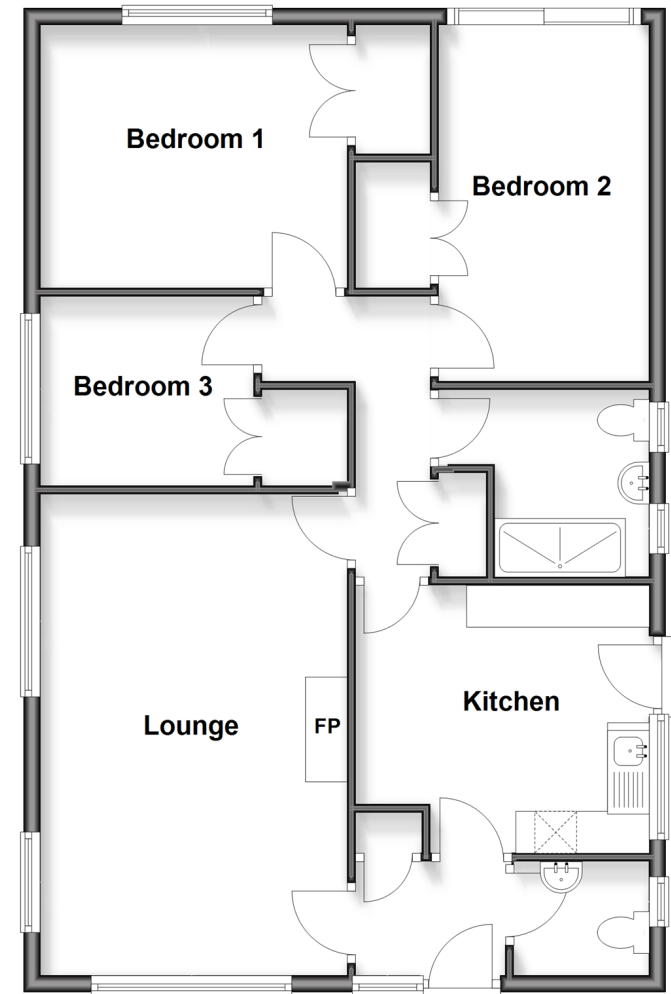
Rear Garden

Garage

Driveway

Ground Floor

Approx. 82.8 sq. metres (891.5 sq. feet)



Call Ryde - 01983 564646 ■ pittis.co.uk

- Legal advice should be taken to verify fixtures/fittings, planning, alterations and/or lease details
- Appliances & services are untested, dimensions are approximate and floor plans are not to scale
- Through a Homewise Home For Life Plan people aged 60+ can secure this property for up to 50% less, by purchasing a Lifetime Lease.



60426771/20251124/JH/JW