



Liebenrood Road, , Reading, RG30 2DU

£180,000

Walmsley

Liebenrood Road, , Reading, RG30 2DU

A light and airy, 2 bedroom first floor apartment situation in this quiet location, offered with no onward chain. The well appointed accommodation comprises; entrance hall, 18ft sitting/dining room, kitchen, 2 double bedrooms and bath room. Externally the property boasts from a nearby garage, residents parking and communal gardens. Further benefits include double glazing and a long lease.

Inglewood Court is located off the A4 Bath Road, nestled just behind Prospect Park, within 1.4 miles of Reading West Station and just 2 miles from Reading Town Centre and Reading Mainline Station. It offers easy access to frequent bus services, major A roads, and the M4 corridor, making it ideal for commuters.

Lease length - 936

Ground rent - £12 per year

Service charge - £1392

EPC - D

Council tax band - C

<https://moverly.com/sale/5FuVyNGBGuXRvRwinNpYsz/view>

Tenure - Leasehold

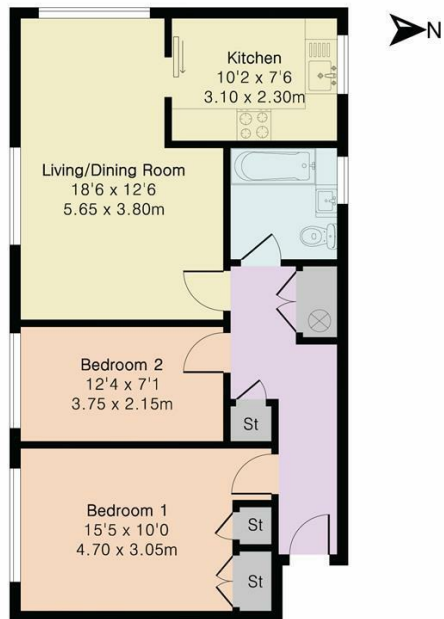




- No onward chain
- Long lease
- Cul-de-sac location
- 2 double bedrooms
- Double glazing
- Within 2 miles of Reading station and centre
- EPC - D
- Council tax - C



Approximate Gross Internal Area 695 sq ft - 65 sq m



First Floor



Floor plan produced in accordance with RICS Property Measurement 2nd Edition. Although Pink Plan Ltd ensures the highest level of accuracy, measurements of doors, windows and rooms are approximate and no responsibility is taken for error, omission or misstatement. These plans are for representation purposes only and no guarantee is given on the total square footage of the property within this plan. The figure icon is for initial guidance only and should not be relied on as a basis of valuation.



Important: Walmsley Estate Agents would inform prospective purchasers that these sales particulars have been prepared as a general guide only. A detailed survey has not been carried out, nor the services, appliances and fittings tested. Room sizes should not be relied upon for furnishing purposes and are approximate. If floor plans are included, they are for guidance only and illustration purposes only and may not be to scale. If there are any important matters likely to affect your decision to buy, please contact us before viewing the property.



9-11 Bridge Street, Caversham, Reading, RG4 8AA
Email: cavershamsales@walmsley.co.uk www.walmsley.co.uk

0118 947 0511

