



RUSSELL KILLNER
ESTATE AGENTS



BRITISH
PROPERTY
AWARDS
2025

GOLD WINNER

ESTATE AGENT
IN ST. NEOTS



19 Field Gate Close

, St. Neots, PE19 6DG

Offers in excess of £475,000

An exceptional four-bedroom detached family home, beautifully presented throughout and offering stylish, spacious accommodation perfectly suited to modern family living. Positioned within a desirable residential setting and offered to the market chain free, this impressive freehold property combines contemporary finishes with a stunning west-facing garden ideal for entertaining.

Early viewing is highly recommended to fully appreciate the space, specification and lifestyle this superb family home has to offer.

Viewing

Please contact us on 0333 210 0179 if you wish to arrange a viewing appointment for this property or require further information.

- No onward chain offering a straightforward and stress-free purchase
- Exceptional four-bedroom detached family home positioned within the highly sought-after Loves Farm development
- Elegant bay-fronted lounge with feature fireplace creating a warm and inviting living space
- Stunning open-plan kitchen/family room featuring integrated Smeg appliances alongside a separate utility area
- Spacious master bedroom with fitted wardrobes and a stylish modern en-suite shower room
- Beautifully landscaped west-facing rear garden with Indian sandstone patio perfect for entertaining
- Established fruit trees including Persimmon, Apple, Cherry and Victoria Plum creating a charming outdoor setting
- Single garage with power, generous driveway parking and substantial outbuilding/shed providing excellent additional storage



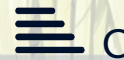
4



2



2



C



BRITISH
PROPERTY
AWARDS

GOLD WINNER

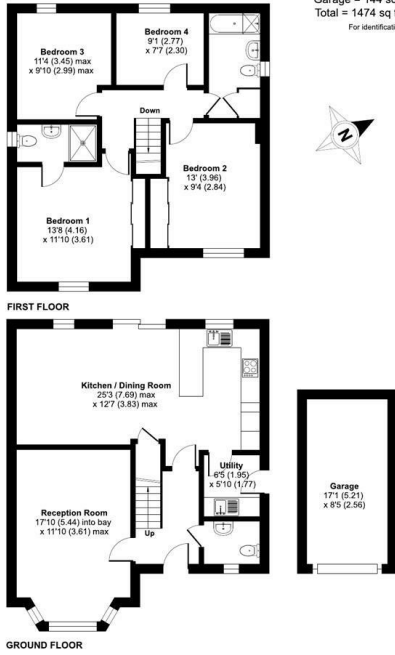
ESTATE AGENT
IN ST. NEOTS



Floor Plan

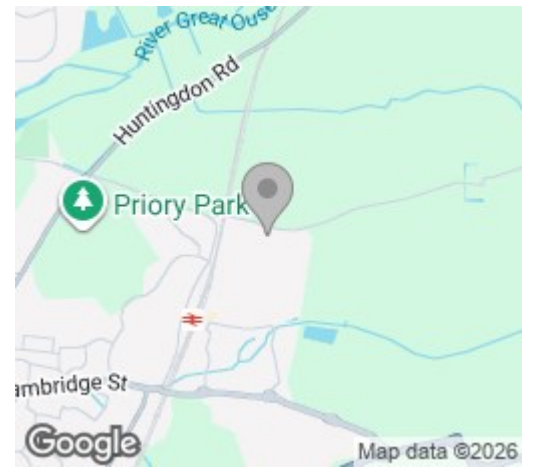
Field Gate Close, St. Neots, PE19

Approximate Area = 1330 sq ft / 123.5 sq m
 Garage = 144 sq ft / 13.3 sq m
 Total = 1474 sq ft / 136.8 sq m
 For identification only - Not to scale

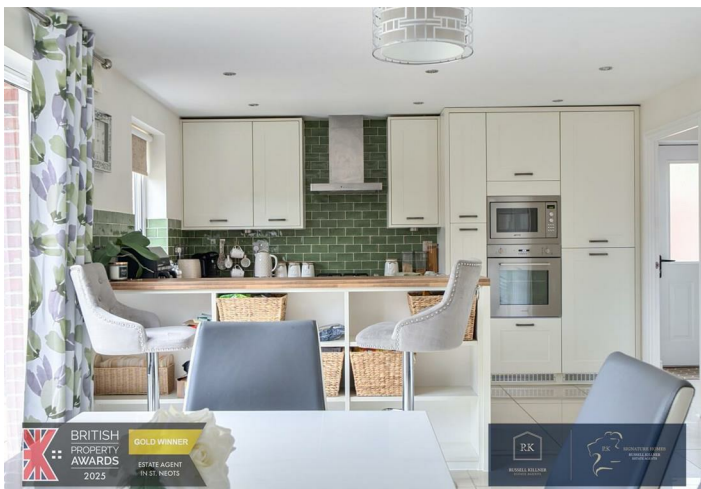
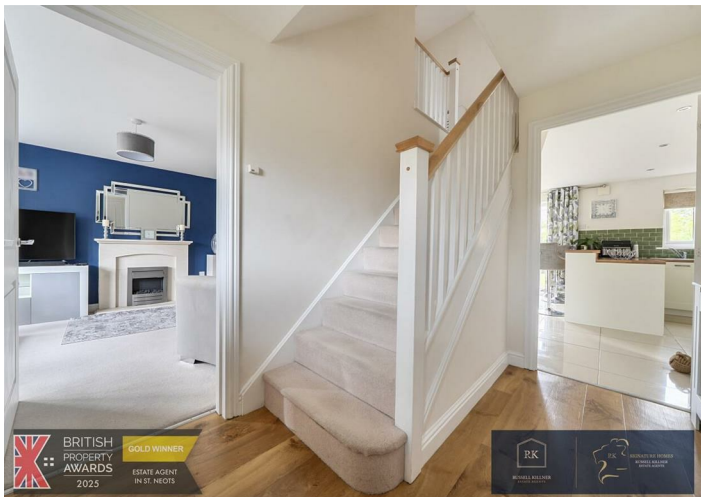
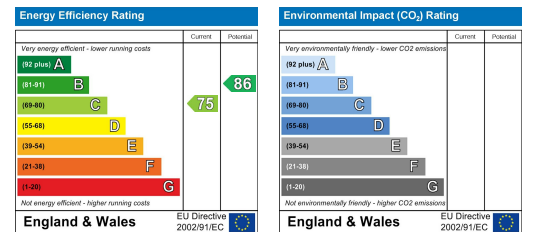


Floor plan produced in accordance with RICS Property Measurement 2nd Edition, incorporating International Property Measurement Standards (IPMS Residential). Produced for Mr. Estate Agents, REF: 1466662. © rickocom 2024.

Area Map



Energy Efficiency Graph



These particulars, whilst believed to be accurate are set out as a general outline only for guidance and do not constitute any part of an offer or contract. Intending purchasers should not rely on them as statements of representation of fact, but must satisfy themselves by inspection or otherwise as to their accuracy. No person in this firm's employment has the authority to make or give any representation or warranty in respect of the property.