



Guide Price
£500,000

Freehold

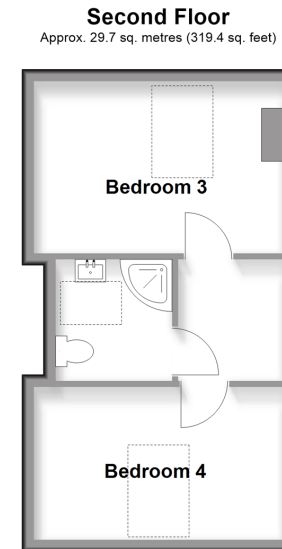
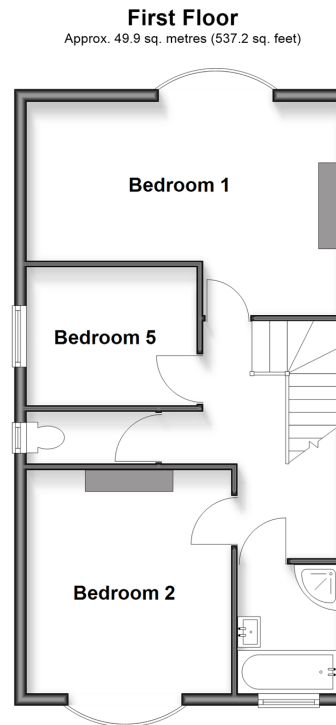
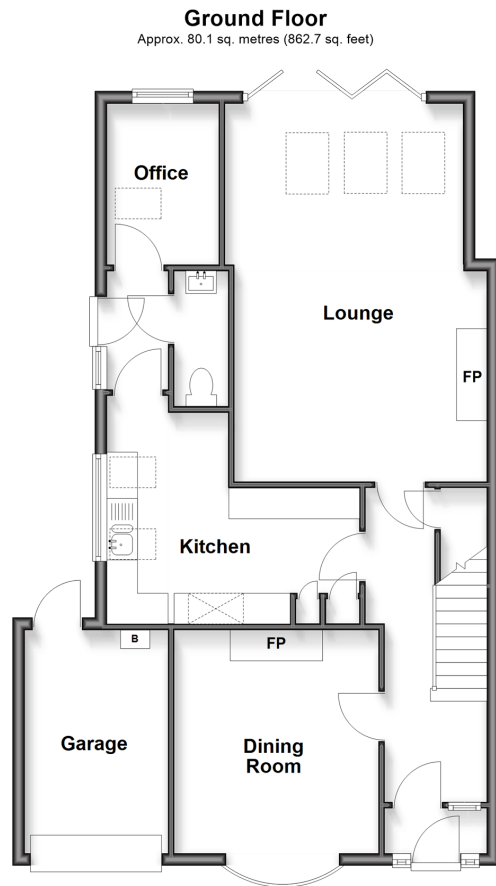
5x  2x  2x 

**Shorncliffe Road,
Folkestone, Kent, CT20**

OVER 60?

Secure this property
for up to **59% less!**

Wards
Helping you move forwards



Accommodation

GROUND FLOOR

Entrance Hall
Hallway
Lounge: 21'11 x 13'5 (6.68m x 4.09m)
Dining Room: 12'4 x 11'0 (3.76m x 3.36m)
Kitchen: 21'11 x 14'0 (6.68m x 4.27m)
Office: 8'10 x 5'0 (2.69m x 1.53m)
Cloakroom

FIRST FLOOR

Landing
Bedroom 1: 18'8 x 11'8 (5.69m x 3.56m)
Bedroom 2: 12'2 x 10'11 (3.71m x 3.33m)
Bedroom 5: 7'3 x 7'3 (2.21m x 2.21m)
Bathroom

SECOND FLOOR

Landing
Bedroom 3: 11'3 x 8'11 (3.43m x 2.72m)
Bedroom 4: 11'8 x 8'2 (3.56m x 2.49m)
Shower Room

OUTSIDE

Garage
Off Road Parking
Rear Garden



Main features

- Chain free with off road parking and garage
- Five spacious bedrooms and separate lounge, dining room and office.
- Generous beautifully maintained rear garden perfect for relaxing or entertaining
- Popular desirable location within easy reach of local amenities and reputable schools
- Close to Folkestone West Train Station with high speed links to London



Nearest Schools

Primary Schools: All Souls' C of E Primary 0.5 miles, Sandgate Primary 0.6 miles, Cheriton Primary 0.8 miles

Secondary Schools: The Harvey Grammar School 0.6 miles, The Folkestone School for Girls 0.9 miles



Transport Information

Train Stations: Folkestone West High Speed Link 0.4 miles, Folkestone Central 1.3 miles, Sandling 5.0 miles



Address

Shorncliffe Road, Folkestone, Kent, CT20



Directions

For directions to this property please contact us.



Wards
Helping you move forwards

Call Folkestone Branch 01303 256505 ■ wardsof Kent.co.uk



■ If buying to rent, please check if Local Authority licensing schemes apply before proceeding

■ Through a Homewise Home For Life Plan people aged 60+ can secure this property for up to 59% less, by purchasing a Lifetime Lease



12638635/20260521/RG/OJ