

An iconic period building

Lansdowne House

NOTTING HILL W11



Lansdowne House is one of Notting Hill and Holland Park's most iconic stand-alone period buildings.

Ideally positioned on Lansdowne Road, one of the area's most prestigious residential streets, the building is a celebrated architectural landmark and a treasured part of the neighbourhood's heritage.



Originally constructed in 1904 by the renowned architect William Flockhart, Lansdowne House was first conceived as a collection of artists' studios. Its creative spirit endured throughout the decades, later becoming home to recording studios used by legendary musicians including Queen, Shirley Bassey, and John Lennon.

Today, this legacy continues within a beautifully renovated two-bedroom, two-bathroom duplex apartment, renovated to an exceptional standard with bespoke detailing throughout. Presented in turnkey condition (fully furnished if required), the apartment blends historic character with contemporary sophistication.





The apartment features an unusually generous principal bedroom suite, complete with a large dressing room or private study. Upstairs, the expansive open-plan kitchen and reception space is flooded with natural light, with striking arched windows wrapping around two aspects of the apartment.







The property is within easy walking distance of the numerous boutique shops, cafés, bars, and restaurants of Kensington Park Road and Westbourne Grove, as well as the world-famous Portobello Road. Perfectly placed for both transport with Holland Park and Hyde Park both within comfortable walking distance.



Approximate Gross Internal Area
1,763 sq ft / 163.79 sq m

CH: Ceiling height
Floorplan for guidance only, not to scale or for valuations purposes. It must not be relied upon as a statement of fact. All measurements and areas are approximate and have been prepared in accordance with the current edition of the RICS Code of Measuring Practice.
© Alex Winship Photography Ltd.

Guide Price
£3,200,000 STC

Tenure
Leasehold
999 years from 28.09.1985
with share of freehold

Local Authority
Royal Borough of
Kensington & Chelsea

Council Tax
Band G

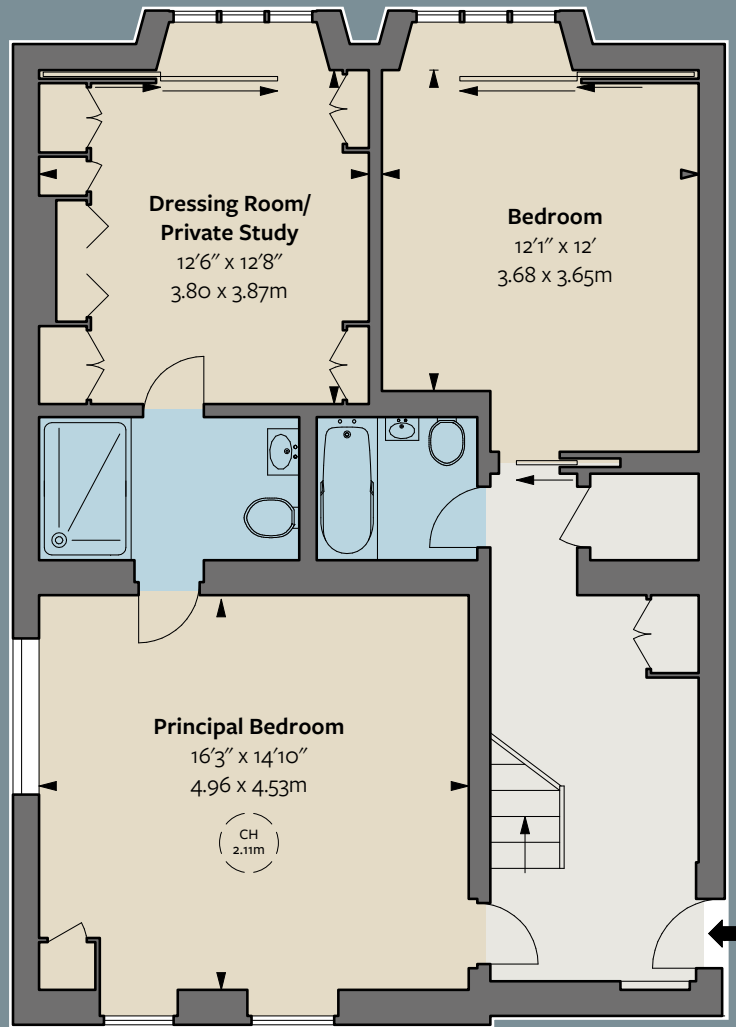
SOLE SELLING AGENTS

LOUISE HEWLETT

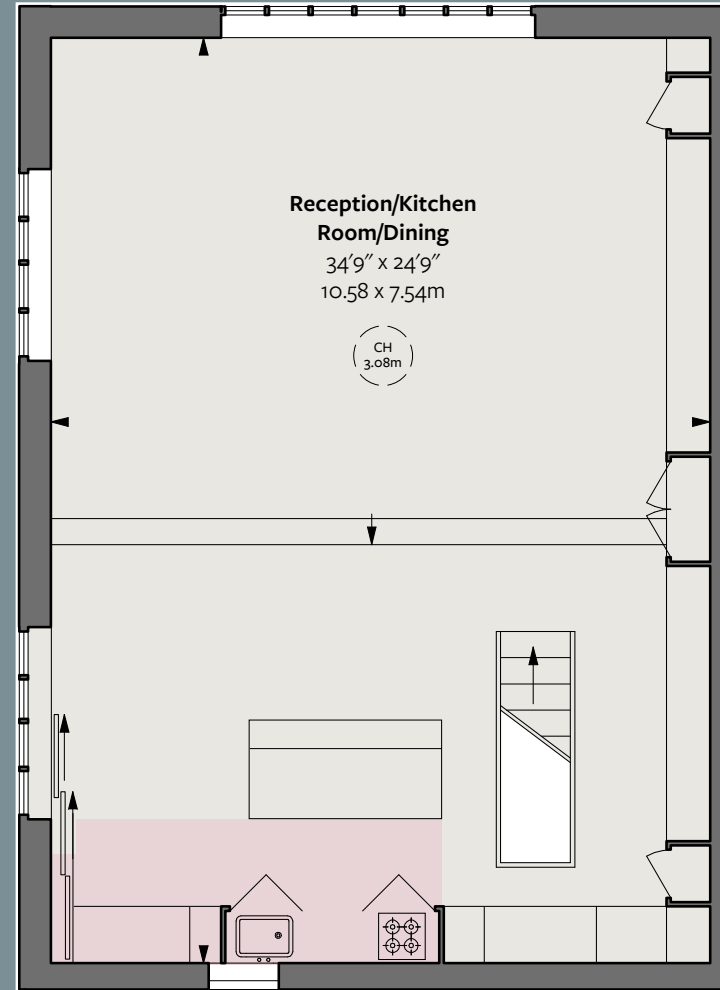
PROPERTY CONSULTANTS

07768 818 802

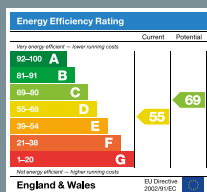
louise@louisehewlett.co.uk



Ground Floor



First Floor



THE BROCHURE
ALEX
WINSHIP

Misrepresentation Act 1967. This brochure and the descriptions and measurements herein do not constitute representation and whilst every effort has been made to ensure accuracy, this cannot be guaranteed.
11/02/26 HEWLETT-240913D-11-GG-FOC