



LAMBETH WALK, SE11

£499,999

Four bedrooms
Ground floor
Chain free
Balcony
Excellent location
Communal gardens

@marshandparsons
marshandparsons.co.uk

MARSH &
PARSONS



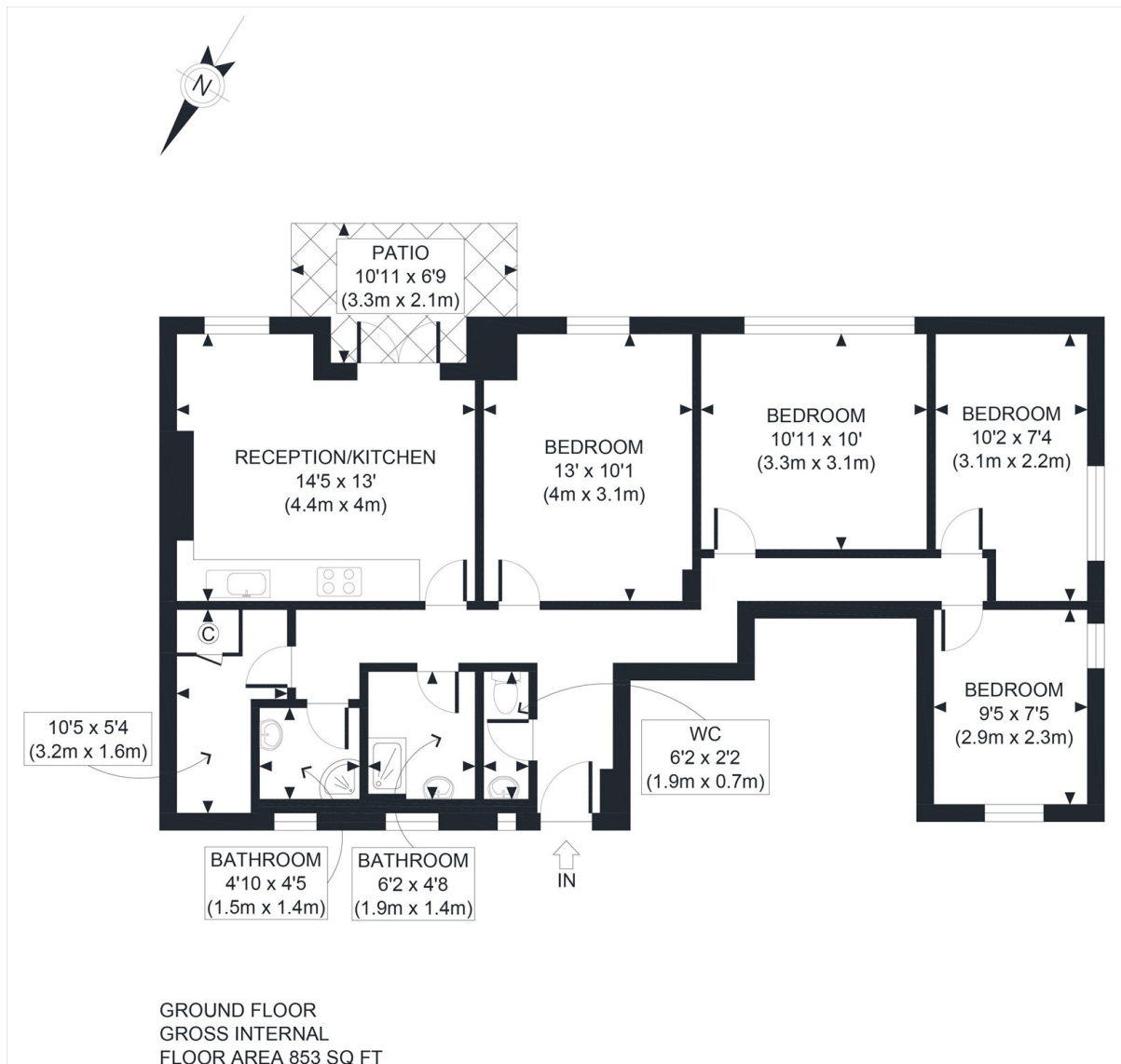
ABOUT THE PROPERTY

Set within a well-maintained block on Lambeth Walk, in the highly sought after China Walk Estate, this spacious apartment is presented in excellent condition throughout. The property features a bright open plan reception room with direct access to a private balcony overlooking the communal gardens. Accommodation comprises four well-proportioned bedrooms, two modern shower rooms, and a separate utility room.

Ideally located moments from Lambeth North underground station, Lambeth Bridge, and London's vibrant South Bank, the area offers an exceptional selection of bars, restaurants, and cultural attractions.



STEP INSIDE LAMBETH WALK



APPROX. GROSS INTERNAL FLOOR AREA 853 SQ FT / 79 SQM

Ref:

Copyright **photoplan**

Disclaimer: Floor plan measurements are approximate and are for illustrative purposes only. While we do not doubt the floor plan accuracy and completeness, you or your advisors should conduct a careful, independent investigation of the property in respect of monetary valuation

Kennington
020 7587 1533

Energy Rating: D We aim to make our particulars both accurate and reliable. However, they are not guaranteed; nor do they form part of an offer or contract. If you require clarification on any points then please contact us, especially if you're traveling some distance to view. Please note that appliances and heating systems have not been tested and therefore no warranties can be given as to their good working order

**MARSH &
PARSONS**