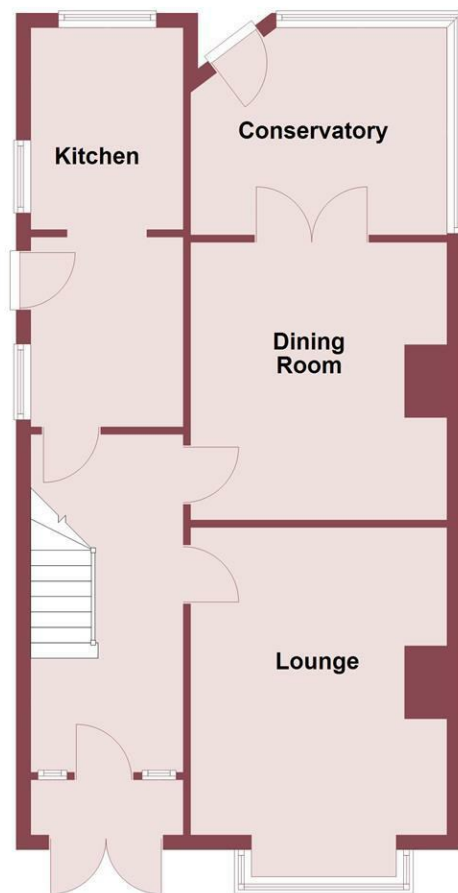
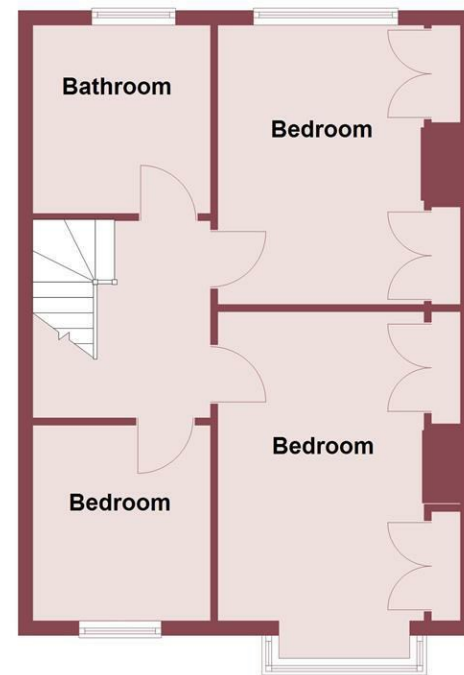




Ground Floor



First Floor



St. Albans Road, Prenton, CH43 8SB

£275,000

3 Bedroom 2 Reception 1 Bathroom

Hewitt Adams is thrilled to offer to the market this charming semi-detached house on St. Albans Road in Prenton. This property presents an excellent opportunity for first-time buyers seeking a delightful home with potential for further development and with the added benefit of being sold with No Onward Chain.

Boasting three well-proportioned bedrooms and two reception rooms this property also provides ample space for a family seeking to establish roots in a thriving community.

Additionally, the property is just a stone's throw away from the picturesque Birkenhead Park, providing residents with easy access to green spaces for leisurely walks, picnics, and recreational activities. This prime location enhances the appeal of the home, making it an ideal choice for those who appreciate the balance of urban living and nature.

In brief the property affords: entrance hallway, lounge, dining room, kitchen and conservatory. Upstairs there are three bedrooms and a family bathroom.

One of the standout features of this property is the immaculate south-west facing rear garden. This tiered outdoor space is not only beautifully maintained but also offers a wonderful setting for outdoor activities, gardening, or simply enjoying the sunshine. The garden's orientation ensures that it benefits from plenty of natural light throughout the day, making it a perfect retreat.

In summary, this semi-detached house on St. Albans Road is a fantastic opportunity for first-time buyers, offering a blend of comfort, potential, and a lovely outdoor space. With its proximity to local amenities and beautiful parks, this property is sure to attract interest from those looking to make it their own.

Front Entrance

Into:

Porch

Door into:

Hall

Radiator, power points, stairs to first floor

Lounge

10'11" x 13'10" (3.35 x 4.23)

Double glazed bay window, radiator, power points, gas fire

Dining Room

12'6" x 11'6" (3.82 x 3.53)

Double glazed double doors to the conservatory, radiator, power points, gas fire

Kitchen

18'0" x 6'10" (5.49 x 2.10)

Wall and base units, inset sink, space for fridge and freezer, space and plumbing for washing machine, space for cooker, space and plumbing for dishwasher, double glazed windows, door to side access

Conservatory

9'4" x 11'6" (2.85 x 3.53)

Power points, looking onto the rear garden

First Floor

Bedroom One

13'11" x 10'11" (4.25 x 3.34)

Double glazed bay window, radiator, power points, integrated wardrobes

Bedroom Two

12'7" x 10'11" (3.84 x 3.34)

Double glazed window, radiator, power points, integrated wardrobes

Bedroom Three

8'9" x 7'0" (2.69 x 2.14)

Double glazed window, radiator, power points

Bathroom

8'5" x 7'0" (2.59 x 2.14)

Comprising bath tub, shower, W.C, hand wash basin, radiator, tiled walls, cupboard

Externally

Front - generous frontage with off road parking, raised stone garden and a detached garage

Rear - beautifully maintained southwest facing garden laid to lawn, and patio with well stocked borders and garden store. Side gate access to the front

