



Holmsey Green, Beck Row, Suffolk, IP28 8AL

Rent - £1,150 PCM Deposit - £1,326

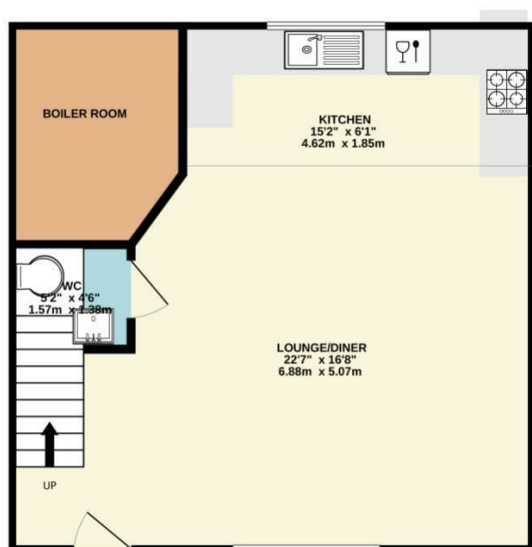
This recently refurbished property is located in the popular village of Beck Row & close to RAF bases. The accommodation comprises of a spacious open plan lounge, dining area & spacious modern kitchen, 1 large bedroom, en-suite & cloakroom. There is parking for 2 cars to the front of the property & an enclosed rear garden.

- RECENTLY REFURBISHED ANNEXE
- 1 GOOD SIZE BEDROOM
- NEW FLOORING THROUGHOUT
- MODERN ENSUITE & CLOAKROOM
- ENCLOSED REAR GARDEN & PARKING
- AIR CONDITIONING UNIT IN LOUNGE
- ELECTRIC HEATING & ENERGY RATING - D
- APPROXIMATE SIZE - 721 SQFT
- SORRY NO PETS / COUNCIL TAX BAND - A
- AVAILABLE EARLY MARCH



Council Tax Band: A - EPC Rating: D 55

GROUND FLOOR
512 sq.ft. (47.6 sq.m.) approx.



1ST FLOOR
323 sq.ft. (30.0 sq.m.) approx.



TOTAL FLOOR AREA : 835 sq.ft. (77.6 sq.m.) approx.

Whilst every attempt has been made to ensure the accuracy of the floorplan contained here, measurements of doors, windows, rooms and any other items are approximate and no responsibility is taken for any error, omission or mis-statement. This plan is for illustrative purposes only and should be used as such by any prospective purchaser. The services, systems and appliances shown have not been tested and no guarantee as to their operability or efficiency can be given.
Made with Metropix ©2023

