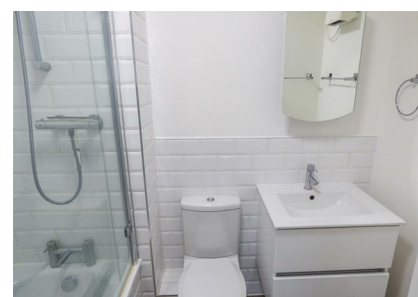
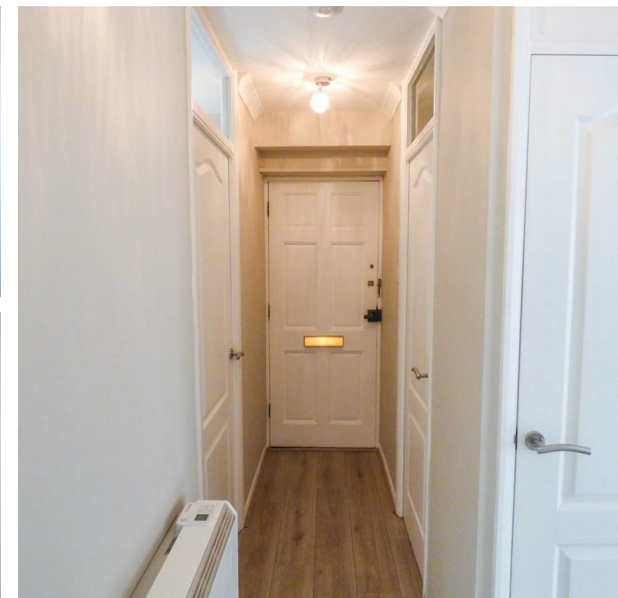
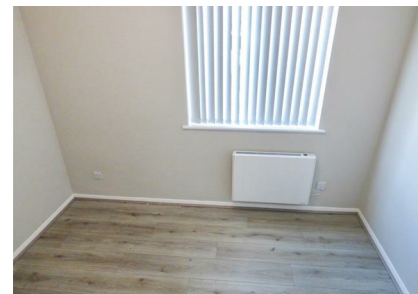


Tyssen Place, South Ockendon, RM15 6PG

£1,500 Per Month

Council Tax Band: B



***** Modern 2-Bedroom Ground-Floor Apartment in Tyssen Court, South Ockendon *****

This bright and attractive ground-floor apartment offers comfortable, low-maintenance living in a popular residential development. Well-maintained throughout and presented to a high standard, it's an ideal choice for professionals, couples or small families seeking convenience and modern amenities.

Key Features

Two bedrooms, both well-proportioned

Bright, airy living space with a welcoming feel

Integrated kitchen including fridge freezer, electric oven and hob with extractor, washing machine and dishwasher

Smart bathroom fitted with a bath and wall-mounted shower

Residents' parking within the development

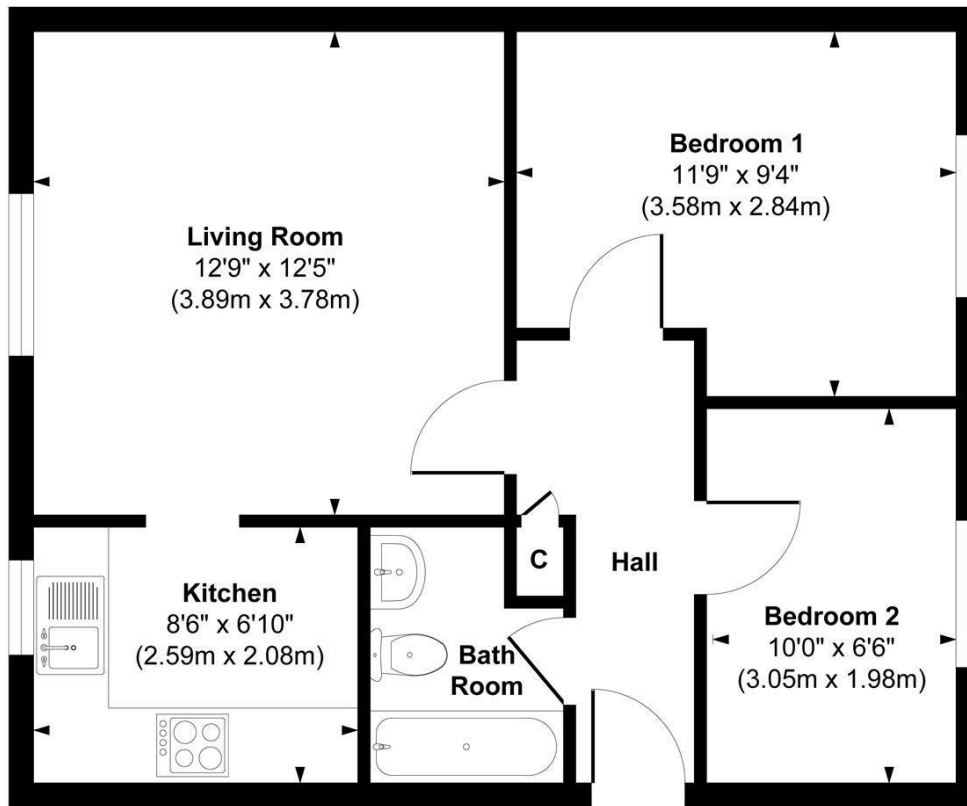
Excellent road and rail links, ideal for commuters

Close to local schools, shops and everyday amenities

Available immediately



Open House Brentwood



Floor Plan

Approx. Gross Internal Floor Area 495 sq. ft / 45.98 sq. m

Illustration for identification purposes only, measurements are approximate, not to scale.

Produced by Elements Property



Energy Efficiency Rating		Current	Potential
<i>Very energy efficient - lower running costs</i>			
(92 plus)	A		
(81-91)	B		
(69-80)	C		
(55-68)	D	62	74
(39-54)	E		
(21-38)	F		
(1-20)	G		
<i>Not energy efficient - higher running costs</i>			
England & Wales		EU Directive 2002/91/EC	