



cubitt  
& west

Price

£1,200 PCM

Fees Apply



Available 30/04/26

Eastmead Lavant PO18

cubitt & west  
Helping you move forwards



## Main Features

Open House Event

Unique Detached Apartment over Carport

Brand New & Never Previously Occupied

Beautifully Presented Throughout

Open-Plan Living with Integrated Appliances

Private, Low-Maintenance Rear Garden

## Accommodation

Private Entrance 14'7 x 5'2

Open Plan Living Space 18'1 x 15'1

Bedroom 11'8 x 11'2

Shower Room 7'9 x 7'2

Private Garden

Carport Parking



Deposit required is £1,384.62  
Chichester District - Council Tax Band N/A

Renting a property is a big commitment and we recommend that you visit the local authority website and these websites which offer helpful information and advice about letting

[www.gov.uk/government/publications/how-to-rent](http://www.gov.uk/government/publications/how-to-rent)

[www.gov.uk/private-renting](http://www.gov.uk/private-renting)

[www.cubittandwest.co.uk/renting/tenancy-fees-individuals/](http://www.cubittandwest.co.uk/renting/tenancy-fees-individuals/)

[www.gov.uk/green-deal-energy-saving-measures](http://www.gov.uk/green-deal-energy-saving-measures)

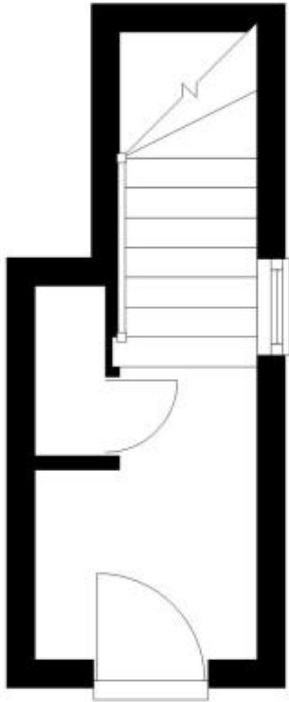
Call Chichester 01243 774772 ■ [cubittandwest.co.uk](http://cubittandwest.co.uk)

IMPORTANT INFORMATION: Please contact our Lettings Team who will confirm the total costs involved in renting this property. For clarification, we wish to inform the prospective tenant that we have prepared these details as a general guide. The agent has not carried out a detailed survey nor tested the services, appliances, or specific fittings (unless otherwise stated), and no warranty can be given as to their condition. All room measurements are taken at floor level. We strongly recommend that all the information which we provide about the property is verified by yourself and your advisers. The contents of this publication are © Cubitt & West, 2015. Cubitt & West is a trading name of Arun Estates Limited Registered in England No. 2597969



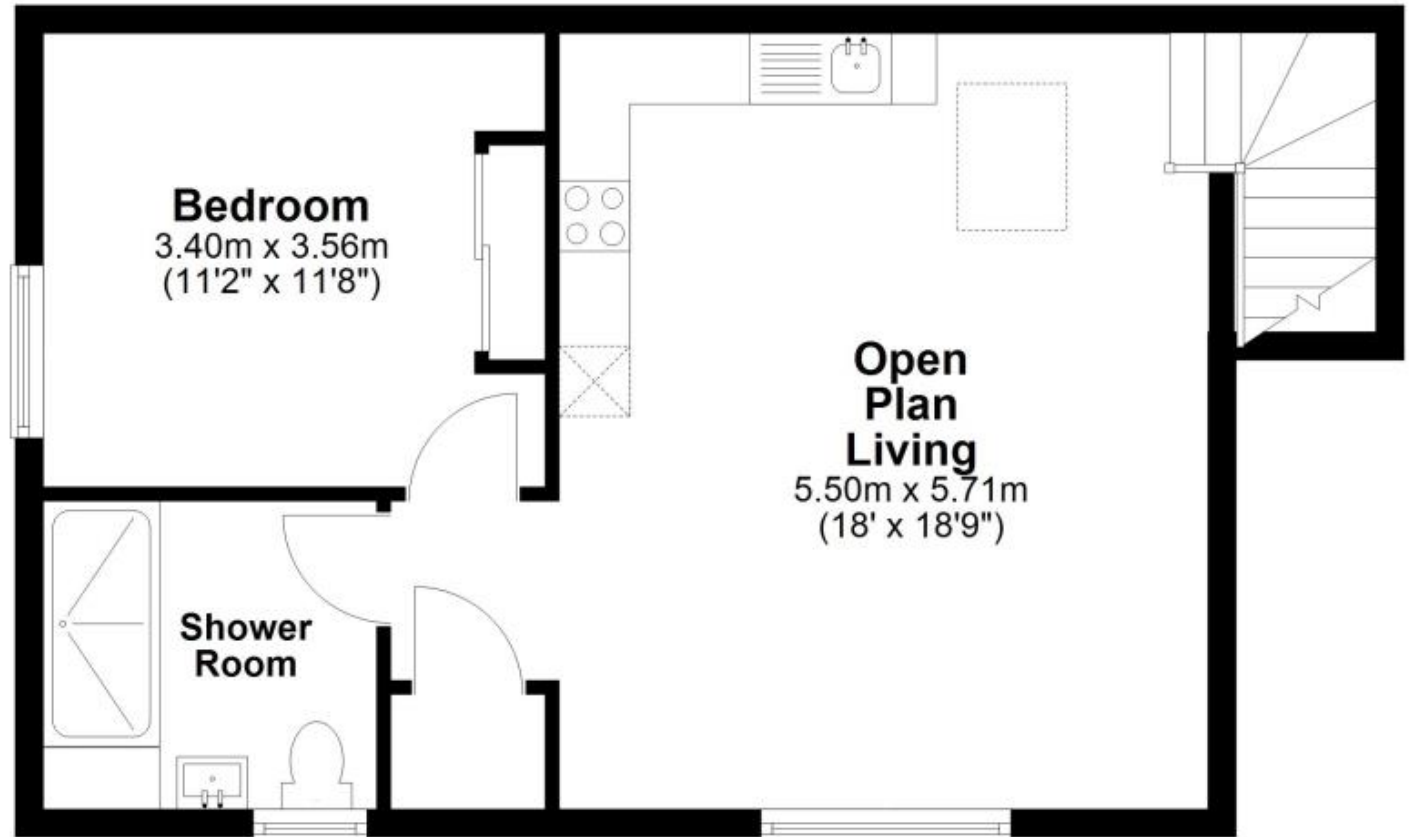
## Ground Floor

Approx. 5.9 sq. metres (63.8 sq. feet)



## First Floor

Approx. 43.1 sq. metres (464.1 sq. feet)



Total area: approx. 49.0 sq. metres (527.8 sq. feet)