



Anerley park, SE20 | Guide Price £300,000

020 8702 9333

crystalpalace@pedderproperty.com

pedder
We live local



In General

- One bedroom apartment
- Balcony
- Allocated parking
- Close to transport & amenities
- First floor
- No onward chain
- Nearby Crystal Palace Park

In Detail

A well presented one bedroom first floor apartment positioned on a highly regarded road moments from Crystal Palace Park and a number of transport links.

This modern property is to be sold with no onward chain and benefits from allocated off street parking and a covered west-facing terrace off of the living space. The reception room extends to over 23ft and is socially open-plan to the kitchen with plenty of work and storage space. Further benefits include neutral décor, solid wood flooring, and ample fitted hallway storage. Externally there are well maintained communal grounds and allocated off street parking.

Anerley Park works well for access to Crystal Palace, Anerley and both Penge East / West rail stations. Nearby leisure and shopping amenities include central Crystal Palace, Anerley Parade and the High Street, whilst also just a short walk to 200 acres of parkland.

This low-rise development is popular with first time and investor buyers alike and would be an ideal opportunity for those seeking a new home to immediately enjoy.

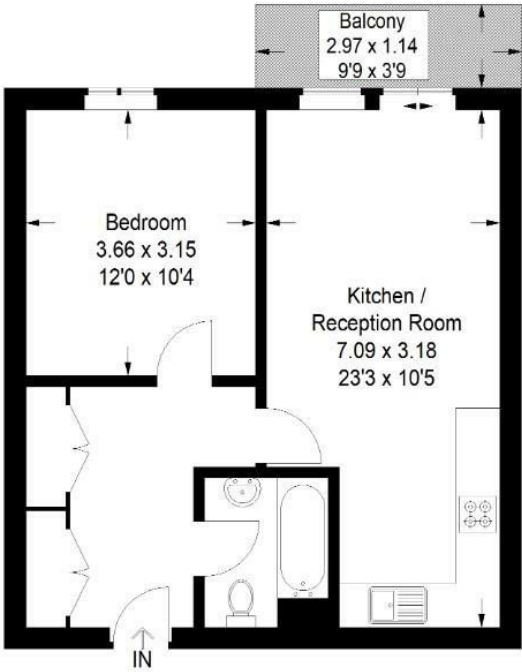
EPC: B | Council Tax Band: C | Lease: 137 Years remaining | SC: £1868pa | GR: £250pa | BI: TBC



Floorplan

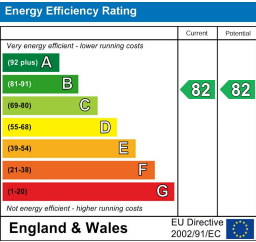
Marshall Court, Anerley Park, SE20

Approximate Gross Internal Area
46.5 sq m / 501 sq ft



First Floor

Copyright www.pedderproperty.com © 2026
These plans are for representation purposes only as defined by RICS - Code of Measuring Practice. Not drawn to Scale.
Windows and door openings are approximate. Please check all dimensions, shapes and compass bearings before making any decisions reliant upon them.



Pedder Property Ltd trading as Pedder for themselves and for the vendor/landlord of this property whose agents they are, give notice that (1) these particulars do not constitute any part of an offer or contract, (2) all statements contained within these particulars are made without responsibility on the part of Pedder or the vendor/landlord, (3) whilst made in good faith, none of the statements contained within these particulars are to be relied upon as a statement of representation or fact, (4) any intending purchaser/tenant must satisfy him/herself by inspection or otherwise as to the correctness of each of the statements contained within these particulars, (5) the vendor/landlord does not make or give either Pedder or any person in their employment any authority to make or give representation or warranty whatsoever in relation to this property.