



## Sylvester Road, HAO

£1,050,000

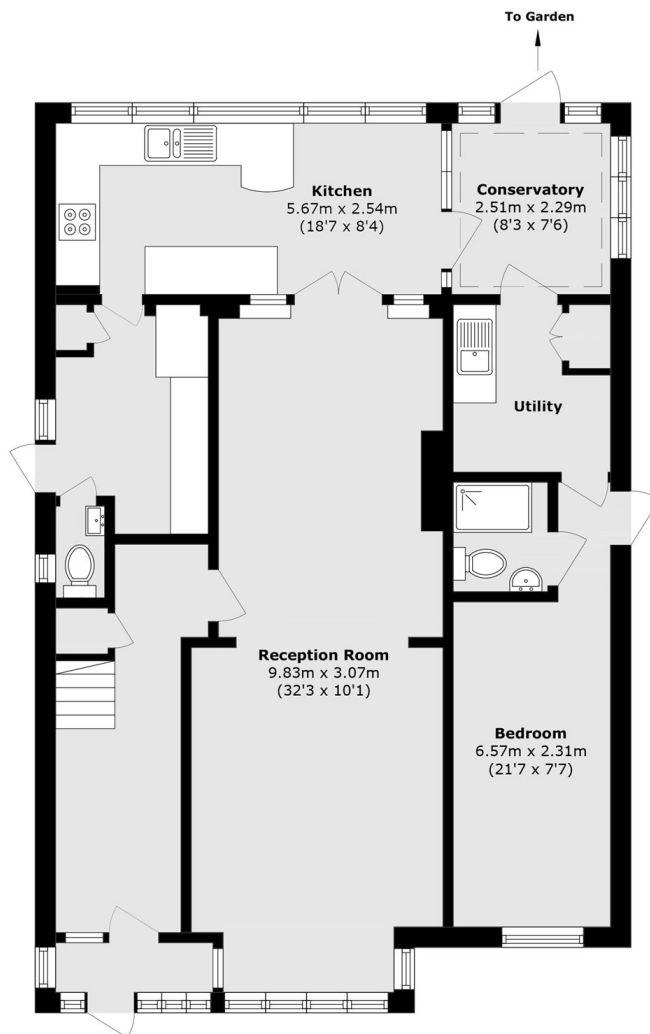
This four bedroom, two bathroom detached family home is in great condition throughout and situated moments from Barham Park. The house is arranged over two floors and offers excellent living space throughout. With off-street parking, a garage, a private rear garden, and potential to extend the property subject to planning permission.

Sylvester Road is a tree lined residential road located within the London Borough of Brent and is well suited for families. Offers excellent connection to Central London via Wembley Central station (Bakerloo line, Lioness line and National Rail) and Sudbury Town station (Piccadilly line)

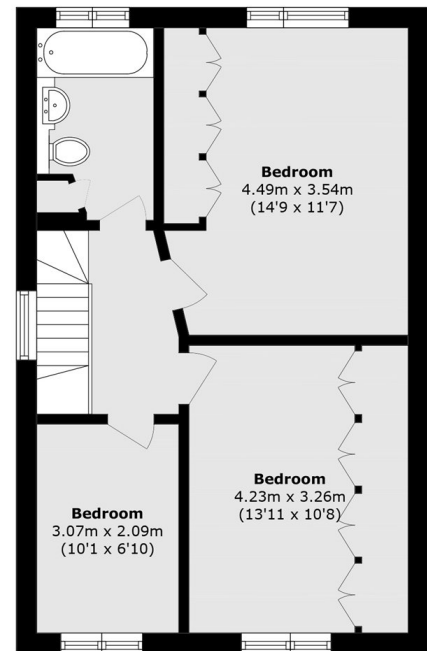
### Features

- Detached House
- Four Bedrooms
- Two Bathrooms
- Large Garage
- Private Driveway
- Potential For Extension

# Sylvester Road, Wembley, HAO



**Ground Floor**



**First Floor**

Total area (approx.): 149.6 sq. m (1610.2 sq. ft)