



Connells

Mill Green Road
Amesbury Salisbury



Property Description

Well situated at the start of this established development and overlooking a green, this semi detached house offers a lounge, newly installed conservatory and mature garden. The property also offers part countryside views and is ideally situated within access of the town centre, the A303 and Salisbury.

Entrance Hall

Kitchen

12' 4" x 9' 7" (3.76m x 2.92m)

Comprising a single drainer sink unit with mixer taps, range of wall and base units with work surfaces over, fitted cooker, space for dishwasher, washing machine and tumble drier, fridge freezer space, front aspect.

Lounge

15' x 12' 5" (4.57m x 3.78m)

Stairs to first floor landing.

Conservatory

Access to garden.

Landing

Built in storage cupboard.

Bedroom One

12' 5" x 9' 2" (3.78m x 2.79m)

Rear aspect with views.

Bedroom Two

12' 6" x 7' 6" (3.81m x 2.29m)

Open aspect to front over a green.

Bathroom

Comprising a panel enclosed bath with wall mounted shower, wash hand basin, WC, tiled floor.

Outside

Rear Garden

A mature garden offering excellent privacy with gated side access, timber shed and flower and shrub borders.

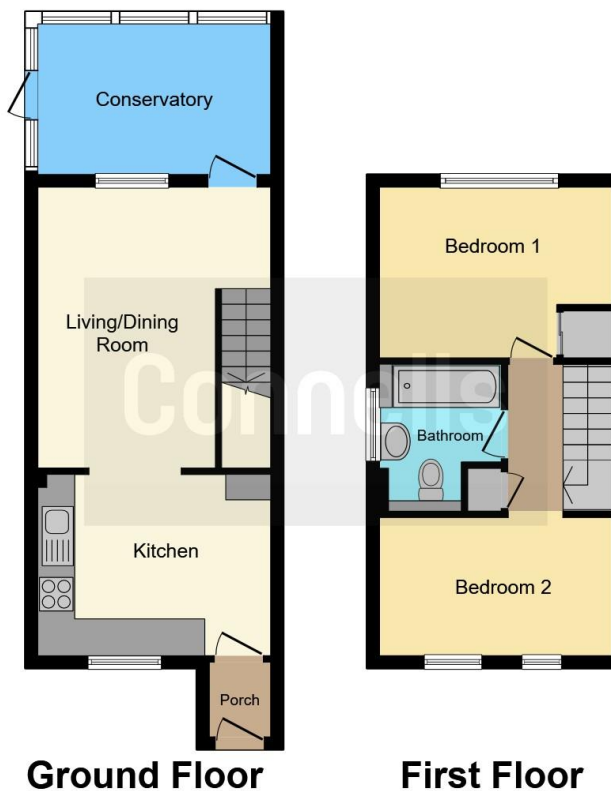
Private Driveway

For two cars









This floor plan is for illustrative purposes only. It is not drawn to scale. Any measurements, floor areas (including any total floor area), openings and orientation are approximate. No details are guaranteed, they cannot be relied upon for any purpose and they do not form part of any agreement. No liability is taken for any error, omission or misstatement. A party must rely upon its own inspection(s). Powered by www.focalagent.com

To view this property please contact Connells on

T 01980 622 662
E amesbury@connells.co.uk

Unit 3 23 Salisbury Street AMESBURY
 SALISBURY SP4 7AW

EPC Rating: Awaited
 Council Tax Band: C

Tenure: Freehold

view this property online connells.co.uk/Property/ABY308636



1. MONEY LAUNDERING REGULATIONS Intending purchasers will be asked to produce identification documentation at a later stage and we would ask for your co-operation in order that there will be no delay in agreeing the sale. 2. These particulars do not constitute part or all of an offer or contract. 3. The measurements indicated are supplied for guidance only and as such must be considered incorrect. Potential buyers are advised to recheck measurements before committing to any expense. 4. We have not tested any apparatus, equipment, fixtures, fittings or services and it is in the buyers interest to check the working condition of any appliances.

Connells Residential is registered in England and Wales under company number 1489613, Registered Office is Cumbria House, 16-20 Hockliffe Street, Leighton Buzzard, Bedfordshire, LU7 1GN. VAT Registration Number is 500 2481 05.

See all our properties at www.connells.co.uk | www.rightmove.co.uk | www.zoopla.co.uk

Property Ref: ABY308636 - 0004