



£635,000 Share of Freehold

WESTRIDGE COURT, PARK HILL, EALING, W5 2JN





A REALLY BRIGHT AND SPACIOUS THREE-BEDROOM PURPOSE-BUILT APARTMENT IN THIS SMALL WELL MANAGED DEVELOPMENT IN PARK HILL.

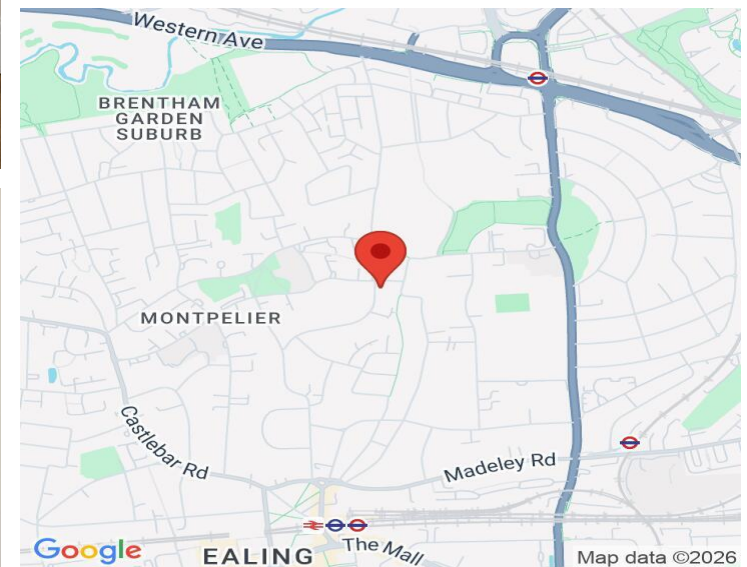
Westridge Court is peacefully situated in this sought after Ealing Street well placed within walking distance of Ealing Broadway, Montpelier School and Hanger Hill Park and underground station and Elizabeth Line.

This very well appointed three double bedroom ground floor apartment comes with a very good size living room / dining room. Well designed and fitted kitchen. Family bathroom and separate shower room / utility area. Well maintained communal gardens. Garage in block and no onward chain.

Service Charge: £3,200 p.a
Underlying Lease: 958 Years

COUNCIL TAX BAND: F

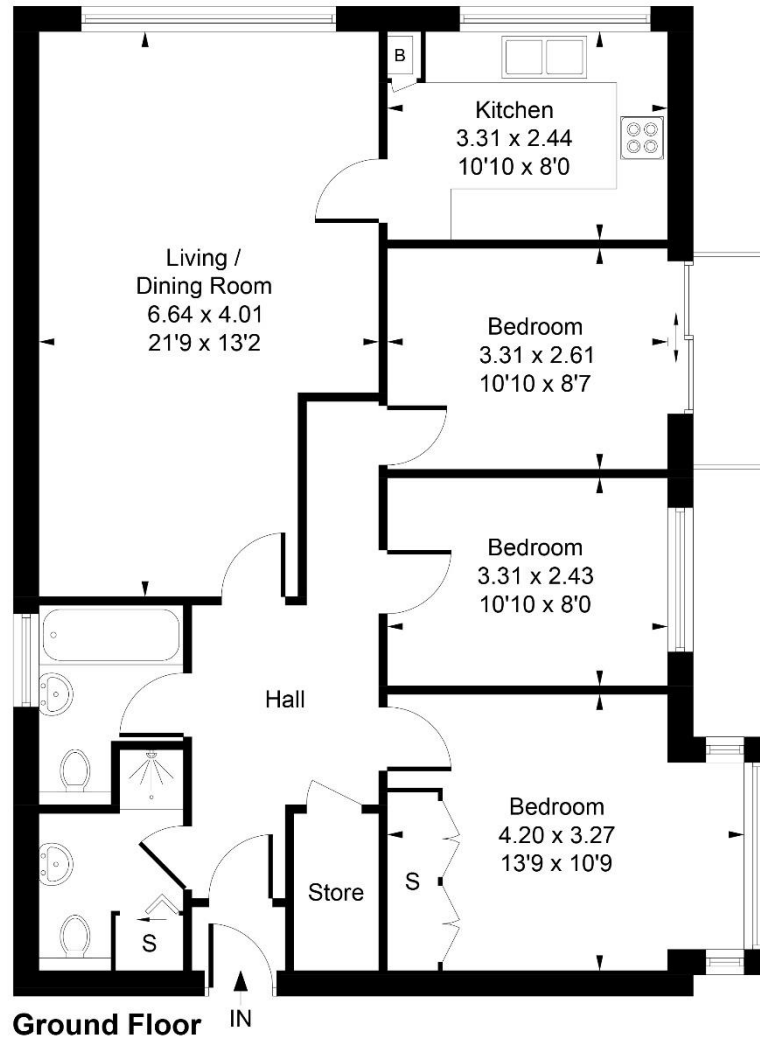
EPC Rating: C



www.sintonandrews.com
020 8566 1990

Westridge Court, Ealing, W5 2JN

Approximate Gross Internal Area
86.50 sq m / 931 sq ft



Whilst every attempt has been made to ensure the accuracy of the floor plan contained here, measurements of doors, windows, rooms and any other items are approximate and no responsibility is taken for any error, omission, or mis-statement. This plan is for illustrative purposes only and should be used as such by any prospective purchaser.

Produced by jcpicturestudio.com

020 8566 1990

8 Spring Bridge Road, Ealing, London W5 2AA

SINTONANDREWS.COM

