



DavidJames
the estate agent

Hotspur Drive, Colwick, Nottingham, NG4 2BS

£950 Per Calendar Month

About This Property

Nestled in the popular area of Colwick, is this well-presented mid-terraced, two-bedroom property. Upon entering, you are greeted by an entrance hall, leading to a kitchen, which is currently undergoing renovation and then a spacious living room with direct access to the enclosed rear garden through patio doors. Upstairs, the property benefits from two bedrooms and a contemporary three-piece bathroom suite. Externally, the home features an enclosed rear garden and to the front, off-street parking is available on the driveway, complemented by a garage, offering additional storage or parking options. Local amenities, schools, and transport links nearby.

TENANCY DETAILS

Available From:

Tenancy Term: Minimum 12 Months

Furnishing: Unfurnished

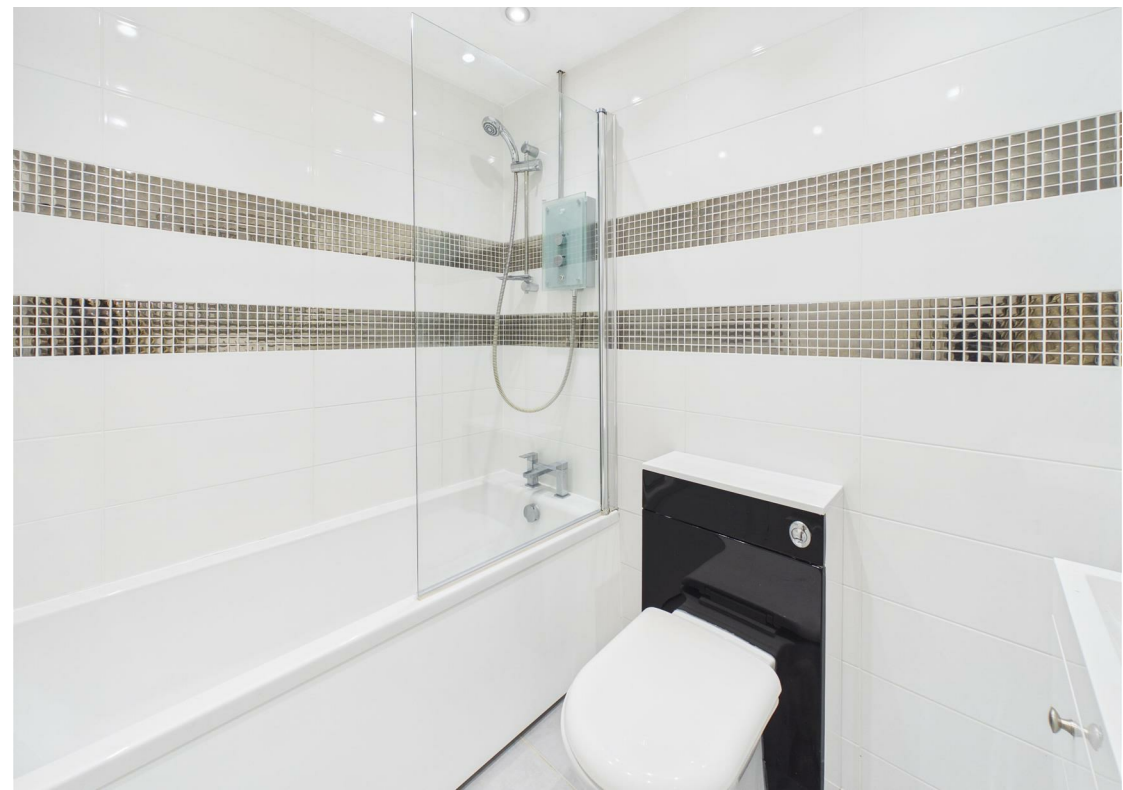
EPC Rating: C

Council Band: B

Pets: Not permitted

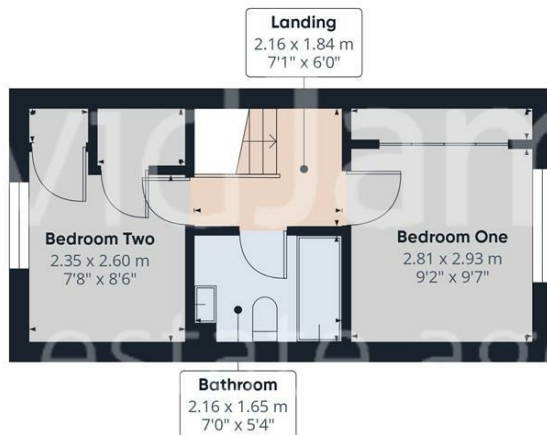
- Mid-terrace located in a desirable area of Colwick
- Two bedrooms
- Spacious living/dining room with garden access
- Currently undergoing kitchen renovation
- Contemporary three-piece bathroom suite
- Full double glazing and Gas Central Heating
- Enclosed, low maintenance rear garden
- Off-street parking via driveway
- Additional garage for parking or storage
- Transport links and amenities nearby







Floor 0



Floor 1



Approximate total area⁽¹⁾

51.2 m²
550 ft²

Reduced headroom

0.9 m²
9 ft²

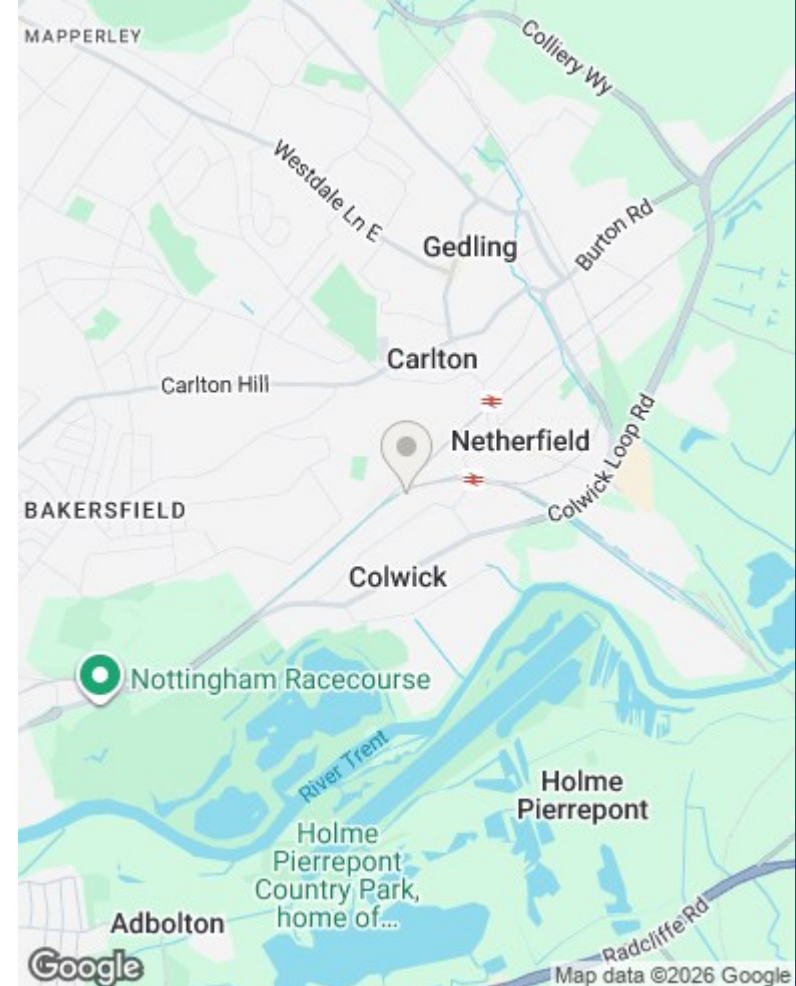
(1) Excluding balconies and terraces

Reduced headroom:

Below 1.5 m/5 ft

Calculations reference the RICS IPMS 3C standard. Measurements are approximate and not to scale. This floor plan is intended for illustration only.

GIRAFFE360



Council Tax Band: B
Gedling Borough Council

DavidJames
the estate agent

David James Estate Agents
45b Plains Road, Mapperley, Nottingham, NG3 5JU
t: 0115 962 4213 e: lettings@david-james.com

naea | propertymark
PROTECTED



These particulars are produced in good faith, are set out as a general guide only and do not constitute any part of a contract. No person in the employment of David James Estate Agents Ltd has any authority to make any representation whatsoever in relation to the property. All services, together with electrical fittings or fitted appliances have NOT been tested. All the measurements given in the details are approximate. Floor plans are for illustrative purposes only and are not drawn to scale. The position and size of doors, windows, appliances and other features are approximate only. The photographs of this property have been taken with a 10mm wide-angle lens. No responsibility can be accepted for any loss or expense incurred in viewing. If you have a property to sell you may wish to take advantage of our free valuation service. David James Estate Agents have established professional relationships with third-party suppliers for the provision of services to Clients. As remuneration for this professional relationship, the agent receives referral commission from the third-party company. David James Estate Agents receives the following commission from each third party supplier on a per referral basis: W A Barnes Ltd: £60 including VAT. All Moves UK Ltd: 18% including VAT of the invoice total (£107 including VAT average). MoveWithUs Limited: £188 including VAT (average).