



Bermondsey Wall East, SE16

£395,000

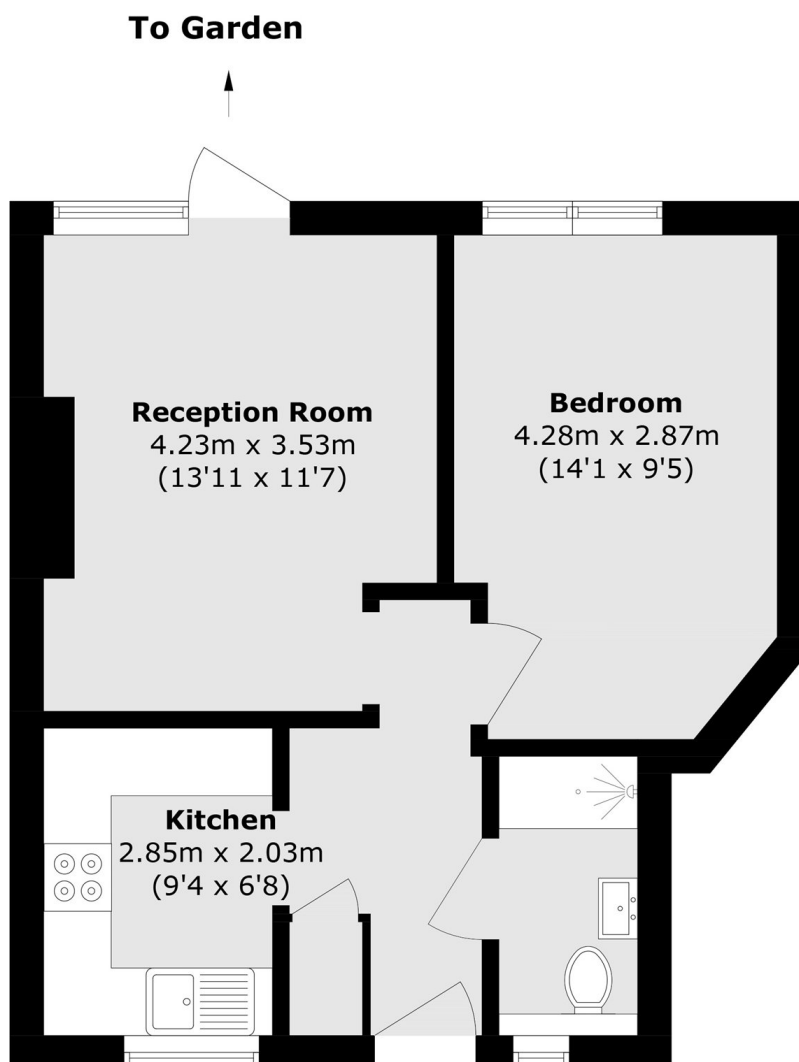
Situated moments from the river, this one double bedroom flat is in immaculate condition and offers a large living space, separate kitchen and beautiful private garden.

Fountain House is located only 0.2 miles from Bermondsey station and 0.5 miles from London Bridge station and is surrounded by shops, cafés, food markets, delis and restaurants and is moments from the River Thames.

Features

- One Double Bedroom
- Private Garden
- Excellent Location
- Chain Free
- Riverside Development
- Permit Parking Available

Bermondsey Wall East, London, SE16



Total area (approx.): 42.6 sq. m (458.5 sq. ft)