



The Drive, N3

£450,000

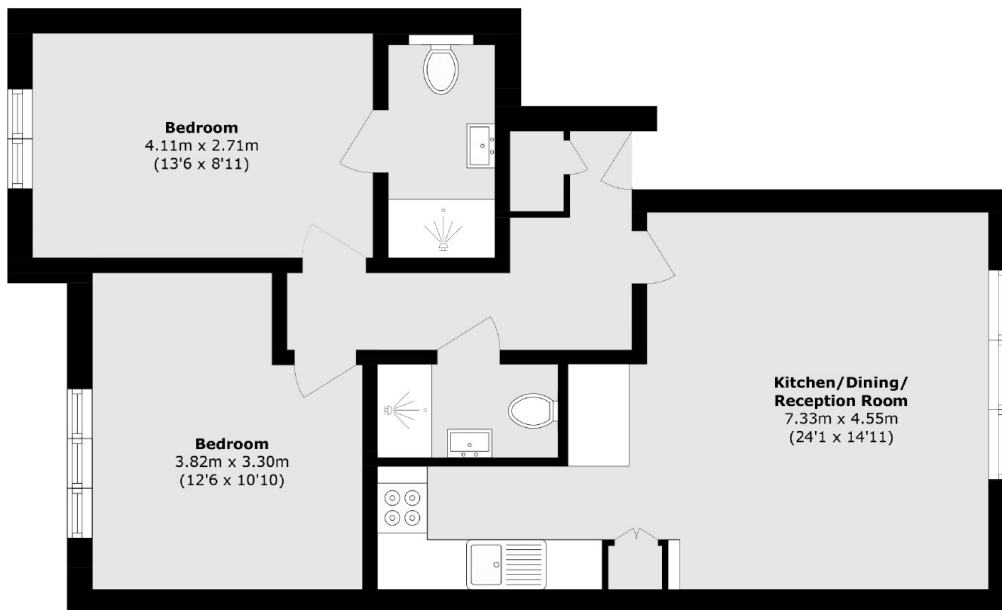
This contemporary first floor apartment features two double bedrooms, an open plan living area with a fitted kitchen, a family bathroom, and an en suite in the master bedroom. Additional highlights include resident parking, stunning views of open space, a share of the freehold and no onward chain.

The Drive is a peaceful cul-de-sac off Finchley Way, within walking distance of Ballards Lane and its amenities, as well as both Finchley Central and West Finchley underground. Nearby green spaces, including Dollis Brook, offer scenic outdoor spots and the area falls within the catchment for local schools.

Features

- First Floor Apartment
- Two Double Bedrooms
- Two Bathrooms
- Share of Freehold
- Residents Parking
- 991 Year Lease

The Drive, London, N3



Total area (approx.): 63.2 sq. m (680.2 sq. ft)