



Ladbroke Grove, W10

£580,000

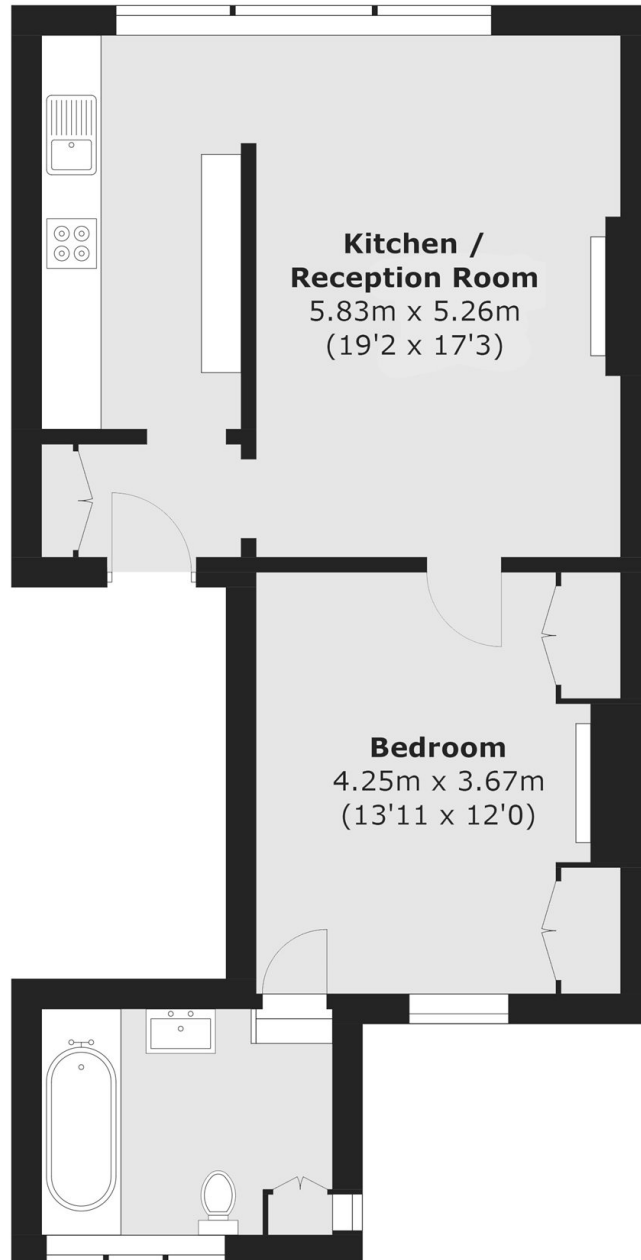
A spacious one bedroom first floor flat with high ceilings and a large reception room, set within a Victorian period building on Ladbroke Grove.

Ladbroke Grove is close to Golborne Road and Portobello Road, known for their independent cafés, restaurants and markets. Ladbroke Grove underground station is nearby providing convenient access across London.

Features

- First Floor Flat
- High Ceilings
- Large Reception
- Period Features
- Key Location
- Leasehold

Ladbroke Grove, London, W10



Total area (approx.): 53.7 sq. m (578.0 sq. ft)