



## Edric Road, SE14

£1,800 Per calendar month

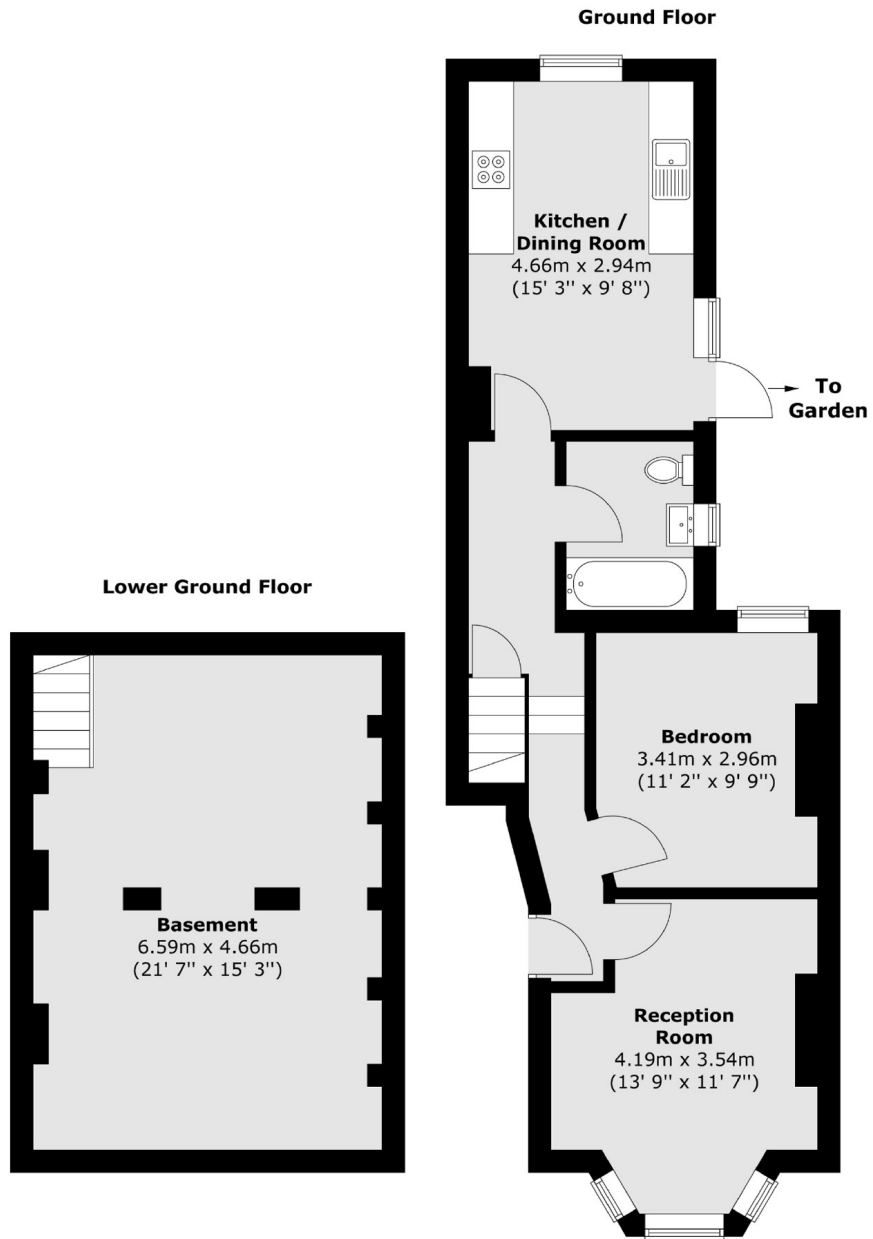
A one double bedroom situated on the ground floor of this Victorian conversion with private rear garden. The property includes a bright and spacious lounge, modern fitted kitchen and ample storage throughout.

Edric Road is located in the sought after Hatcham Park Conservation area, with excellent transport links from New Cross Gate to London Bridge and Canary Wharf as well as Shoreditch, Hackney and Islington.

### Features

- Ground Floor Flat
- Double Bedroom
- Unfurnished
- Modern Fitted Kitchen
- Private Rear Garden
- Victorian Conversion

Edric Road,  
London, SE14



Total area (approx.) : 81.5 sq. m (877 sq. ft)