

W
WHITES



Miles Cottage

Miles Cottage, Salisbury Road, Shrewton, SP3 4EQ

Really interesting period cottage with character features together with later extensions all set in a good sized garden.

- Character Cottage
- Quiet Location
- Good Garden
- Ample Parking
- Four Bedrooms Two Bathrooms
- Three Reception Rooms
- Home Office/Studio
- Central Heating
- Exposed Beams
- Inglenook Fireplace

£650,000





About The Property

Miles Cottage is a lovely character cottage with painted brick and flint elevations under a tiled roof, together with red brick and flint later additions. It is set well back from the road with tarmac parking area to the front and a small garden laid to gravel for easy maintenance with inset shrubs, plants and wisteria on the wall. Further parking could be created and there is space for a carport/garage subject to usual permissions.

Enter the cottage via the solid wood front door which leads into the hallway. To the left is the cloakroom/utility area, to the front is the kitchen and to the right the dining room. The kitchen has an exceptional range of work surfaces, cupboards and drawers together with built in double oven, hob and extractor hood, fridge, freezer and space for dishwasher. There are tiled splashbacks to the walls, ceiling downlighters and the floor is tiled. The double aspect sitting room features a bay window overlooking the rear garden, double doors to the terrace, oak flooring, downlighters and free standing wood burning stove. The dining room

has a shelved recess, oak flooring, ceiling timbers and the stairs to the first floor. Finally on the ground floor is the family room with ceiling timbers, oak flooring and inglenook fireplace with woodburning stove.

On the first floor, the landing has a shelved airing cupboard with hot water tank and access to the loft space. The double aspect master bedroom has a range of built in wardrobes, there are two further double bedrooms, a single bedroom, period bathroom and shower room.

Outside there is a large rear terrace with several sitting areas and pergola to side. Steps lead down to lawn with shrubs and trees. There is a useful outside home office/studio (4.07m x 2.85m) with power, light and double glazing. There is a further area of garden beyond this perfect for vegetables or just as a family play area with garden shed.





W
WHITES

Key Information

Local Authority:

Wiltshire Council

Council Tax:

Band: D - £2444.04 (2026/2027)

Tenure:

Freehold

Floor Area:



1628.50 sq ft

Services:

Mains electricity, water and drainage.

Heating:

Oil central heating

Directions:

Leave Salisbury on the A360 Devizes Road and after crossing over the A303 at the roundabout continue to the next roundabout turning left towards the village of Shrewton. Proceed into the village turning left in to Chalke Hill. At the T junction there is a red brick house immediately to the front where the driveway to Miles Cottage will be seen to the left hand side.

EPC:

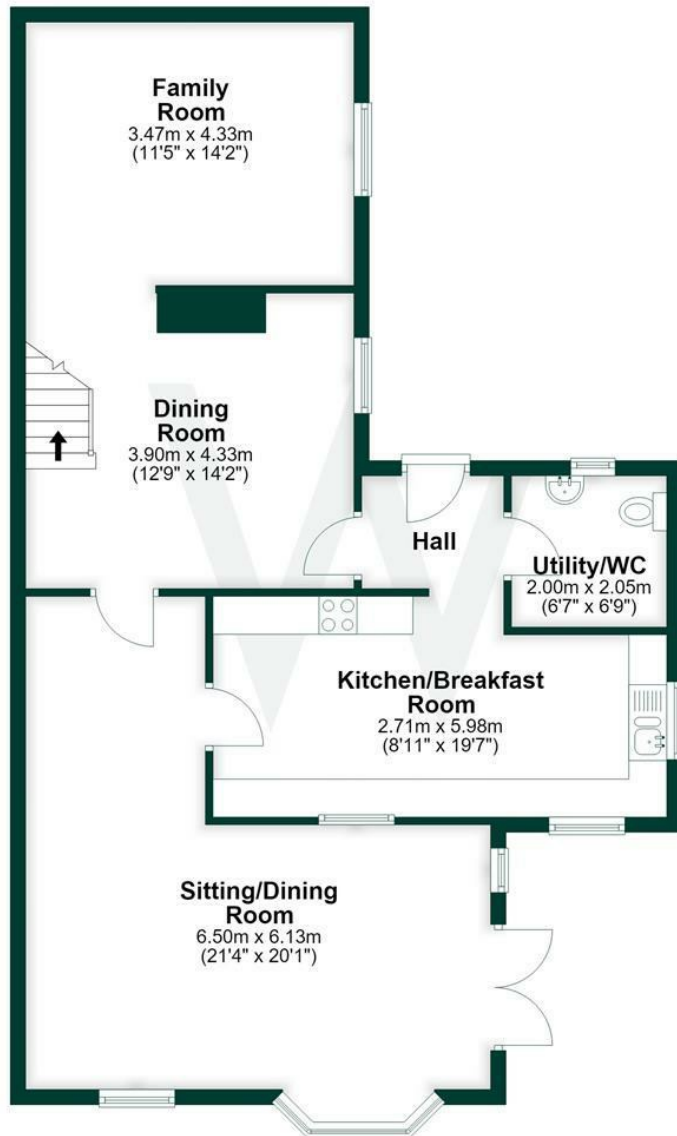
Energy Efficiency Rating		
	Current	Potential
<i>Very energy efficient - lower running costs</i>		
(92 plus) A		
(81-91) B		
(69-80) C		
(55-68) D		
(39-54) E		
(21-38) F		
(1-20) G		
<i>Not energy efficient - higher running costs</i>		
England & Wales	EU Directive 2002/91/EC	

What3Words:

///prep.somewhere.carbonate

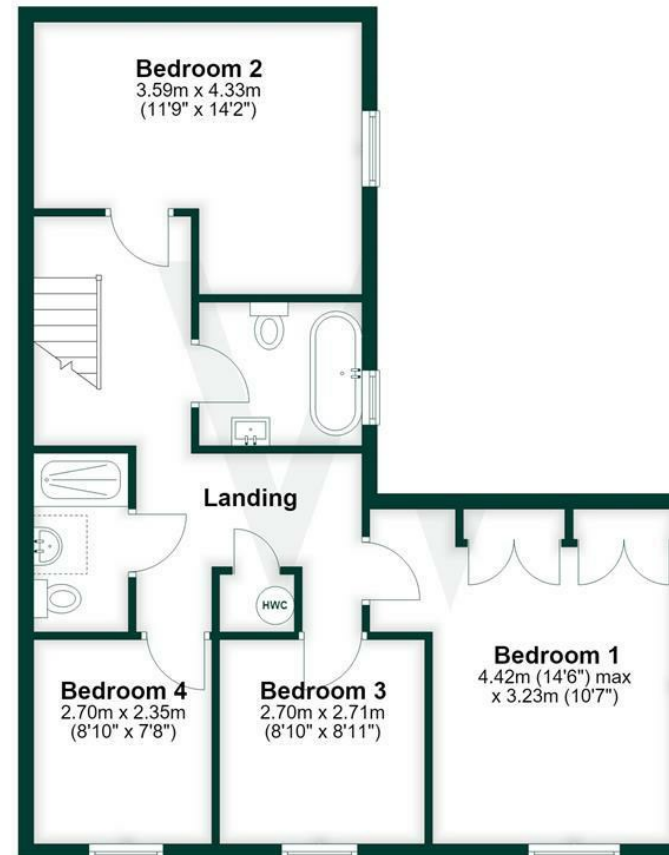
Ground Floor

Approx. 86.2 sq. metres (927.7 sq. feet)



First Floor

Approx. 65.1 sq. metres (700.8 sq. feet)



Total area: approx. 151.3 sq. metres (1628.5 sq. feet)