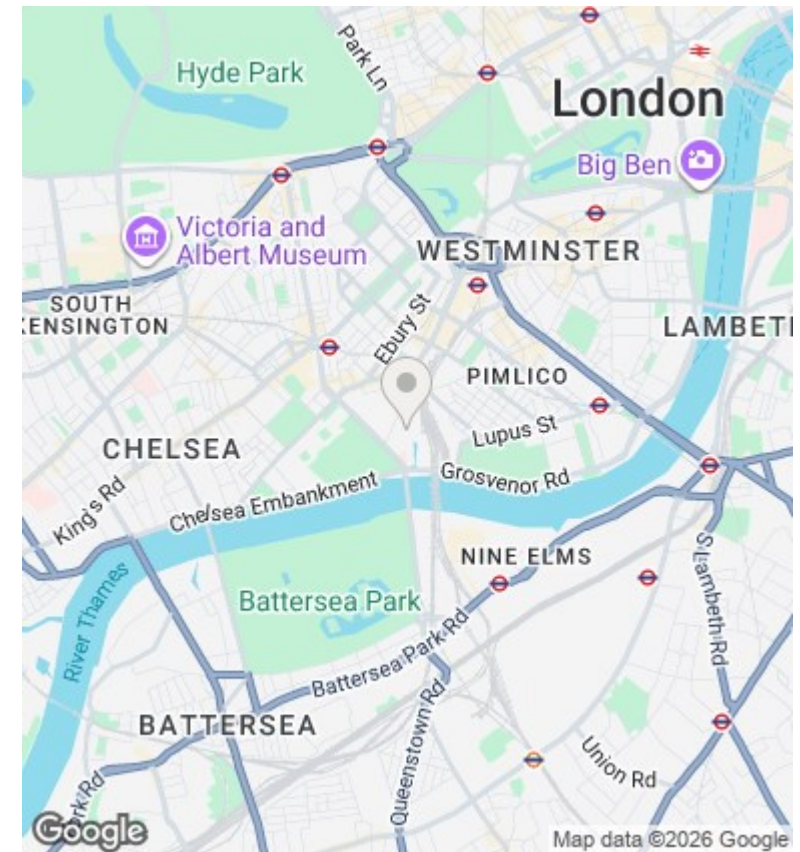
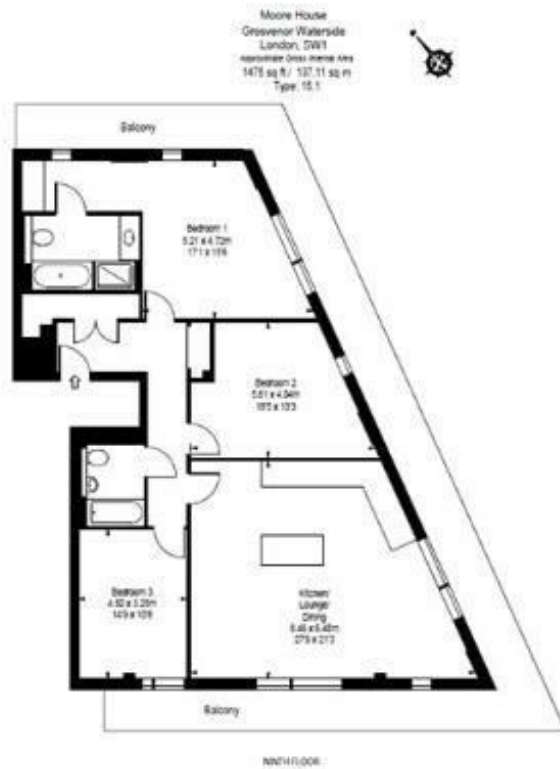




## Moore House, Gatliff Road, Grosvenor Waterside, Sloane Square SW1W 8DU

£2,750,000

- 24/7 CONCIERGE
- PENTHOUSE
- 2 ALLOCATED PARKING SPACES
- VIDEO VIEWING AVAILABLE
- PRIVATE TERRACE RUNNING ALONG THE FLAT
- RESIDENCE GYM AND SPA
- 3 BEDROOMS 2 BATHROOMS
- UNDER FLOOR HEATING AND AIR COOLING
- WALKING DISTANCE TO VICTORIA , SLOANE SQUARE AND KINGS ROAD



## Viewings

Viewings by arrangement only.  
Call 02077225022 to make an appointment.

## Council Tax Band

H

## EPC Rating:

C

Energy Efficiency Rating		Current	Potential
<i>Very energy efficient - lower running costs</i>			
(92 plus) <b>A</b>			
(81-91) <b>B</b>			
(69-80) <b>C</b>		80	80
(55-68) <b>D</b>			
(39-54) <b>E</b>			
(21-38) <b>F</b>			
(1-20) <b>G</b>			
<i>Not energy efficient - higher running costs</i>			
<b>England &amp; Wales</b>		EU Directive 2002/91/EC	