



Staines Road East, TW16

£220,000

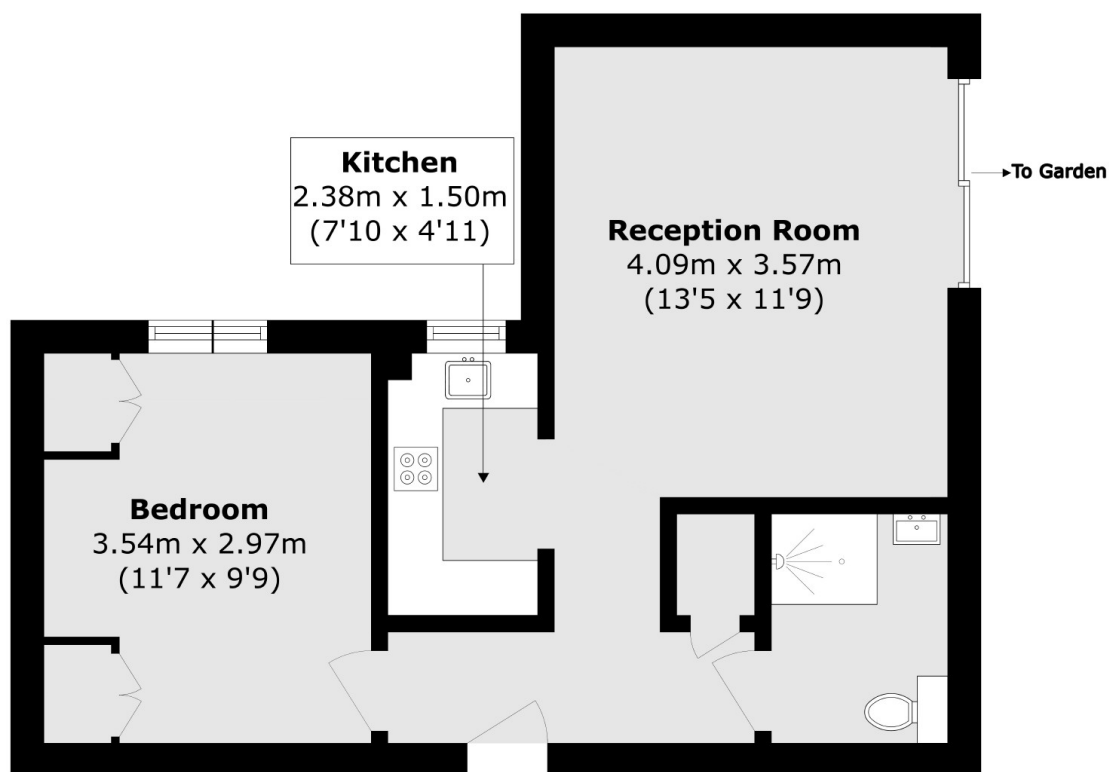
A smartly presented one bedroom ground floor apartment with parking and communal gardens. Priory Walk is a retirement development and has been designed for buyers aged 55 and above. This property is perfect if you are looking to downsize.

Priory Walk is a great location, tucked away off the Staines Road East. Both Sunbury and Kempton Park Stations are approximately a quarter of a mile away and provide a direct service into London Waterloo.

Features

- One Bedroom
- Ground Floor
- Communal Gardens
- Parking
- 900+ Year Lease
- Retirement Apartment

Staines Road East, Sunbury-On-Thames, TW16



Total area (approx.): 38.9 sq. m 418.7sq. ft)