

Queens Road, N11 £450,000

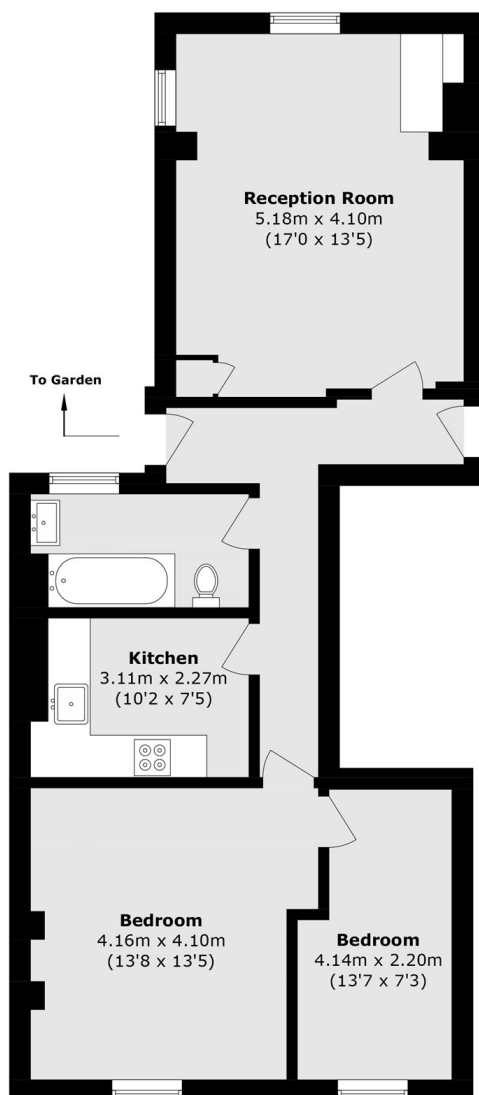
Ready to move into is this two double bedroom ground floor garden flat with dual aspect windows in a bright and airy reception room. The property also comes with and a separate kitchen and direct access onto a private court yard style garden which has side access and off street parking for multiple cars.

Located 0.2 miles from Bowes Park British rail station and Bounds Green tube station offering phenomenal links to the City and West End. Schools and local amenities including supermarkets, restaurants, pubs and cafes are all within a short distance.

Features

- Two Bedroom
- Chain Free
- Separate Kitchen
- Off Street Parking
- Private Garden
- Own Front Door

Queens Road,
London, N11



Total area (approx.): 68.2 sq. m (734.1 sq. ft)