



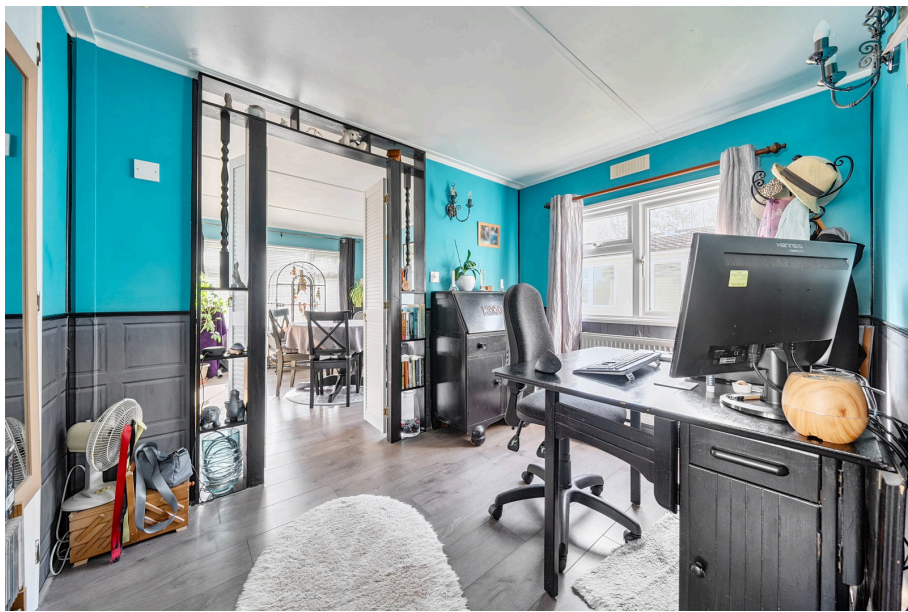
Heath Farm Park, Barford St Martin, Salisbury, Wiltshire, SP3 4BH

£140,000

🛏️ 2 🚿 1 🚗 1



- Detached Park Home
- Sought After Residential Park
- Two Bedrooms
- Refitted Shower Room
- Refitted Modern Kitchen
- Well Presented Accommodation
- Dual Aspect Lounge
- Separate Dining Room/Study
- No Stamp Duty To Pay
- Enclosed Gardens

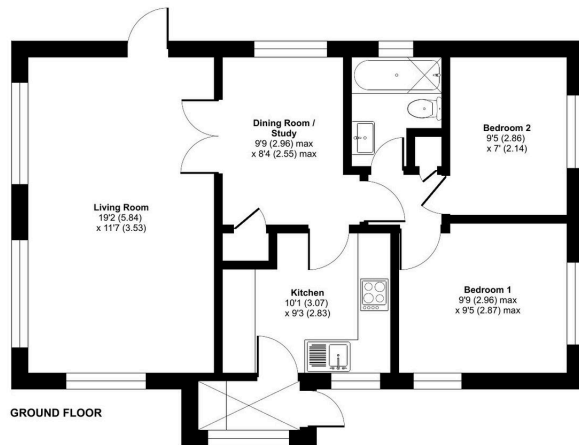


A well presented two bedroom detached park home bungalow located on this popular residential park for the over 40's close to the Wiltshire/Dorset border. This home has bags of charm and character and boasts a separate lounge and dining room/ reception room, two double bedrooms, a re-fitted modern shower room as well as double glazing and gas central heating. There are pleasant, enclosed gardens to all sides of the home which are designed for ease of maintenance and the rear garden backs on the residents open green area. This is a lovely home that must be viewed to be appreciated.



Heath Farm Park, Barford St. Martin, Salisbury, SP3

Approximate Area = 643 sq ft / 59.7 sq m
For identification only - Not to scale



Floor plan produced in accordance with RICS Property Measurement 2nd Edition, incorporating International Property Measurement Standards (IPMS2 Residential). © richvecom 2025. Produced for The Park Home Agency Ltd. REF: 1430992



01793 230185
sales@theparkhomeagency.co.uk

Agents Notes: All measurements are approximate and quoted in metric with imperial equivalents and for general guidance only and whilst every attempt has been made to ensure accuracy, they must not be relied on. The fixtures, fittings and appliances referred to have not been tested and therefore no guarantee can be given that they are in working order. Internal photographs are reproduced for general information and it must not be inferred that any item shown is included with the property. For a free valuation, contact the numbers listed on the brochure