



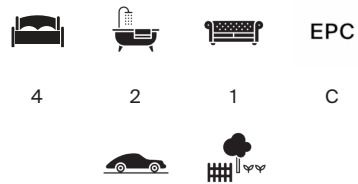
PRINCES ROAD

Weybridge, Surrey, KT13



A MODERN FOUR BEDROOM FAMILY HOME IN WEYBRIDGE

Set within a pleasant residential road while remaining conveniently
placed for Weybridge amenities and mainline station



Local Authority: Elmbridge Borough Council

Council Tax band: G

Tenure: Freehold



DESCRIPTION

- * Attractive and well-presented town house arranged over three spacious floors.
- * Bright and generous reception/dining room with excellent natural light and bi-folding doors opening directly onto the garden, ideal for entertaining
- * Stylish modern kitchen with sleek cabinetry and integrated appliances
- * Three well-proportioned bedrooms, including an impressive top-floor room with ample space for wardrobes and storage
- * Modern family bathroom and additional shower room, both finished to a high standard with striking tiling and brass fittings
- * Cleverly designed under-stairs wine storage, adding both character and practicality
- * Private, low-maintenance rear garden featuring artificial lawn, paved seating area and mature planting – perfect for outdoor dining











DESCRIPTION

- * Single garage located close by, offering secure parking or additional storage
- * Off-street parking to the front of the property
- * Well-suited to professional buyers, downsizers or young families seeking turnkey accommodation

Weybridge and the surrounding towns offer an extensive range of leisure pursuits, including river walks and bike rides along the towpaths of the Thames and the Wey. Mercedes-Benz World and the famous Brooklands Museum, including Concorde, are conveniently located.

The town centre has a range of both high street chains and individual boutiques, including a Waitrose supermarket and an excellent mix of restaurants and gastro pubs, including Cote Brasserie, Prezzo, Pizza Express, The Minnow and The Queens Head. Brooklands also offers a wider range of shopping, including Marks and Spencer.

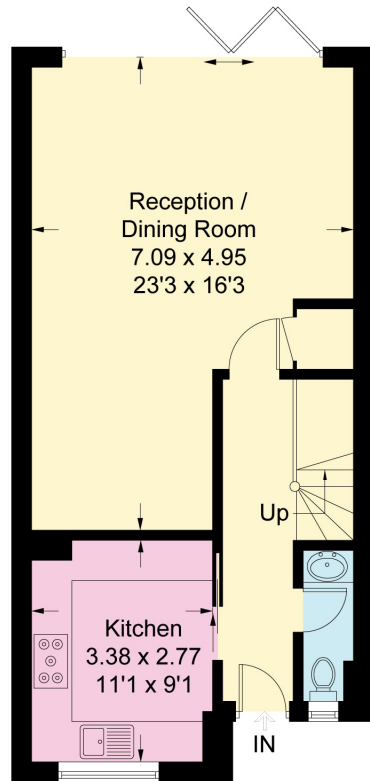
Walton and Esher both offer an Everyman Cinema, and the golf enthusiast has a number of the area's best golf courses to choose from, including St George's Hill, Burhill and The Wisley.



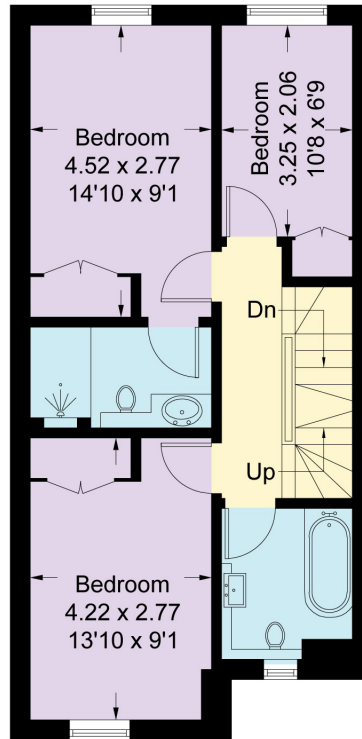


Princes Road, KT13

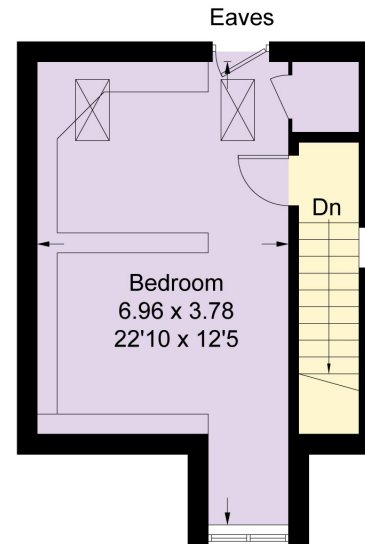
Approximate Gross Internal Area = 128.6 sq m / 1384 sq ft
 Garage = 14.2 sq m / 153 sq ft
 Total = 142.8 sq m / 1537 sq ft



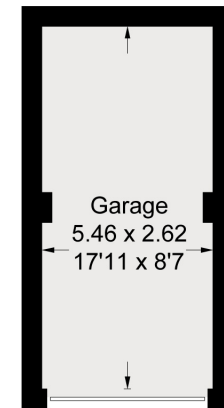
Ground Floor



First Floor



Second Floor



(Not Shown In Actual Location / Orientation)

Measured in accordance with RICS Code of Measuring Practice. To be used for identification and guidance purposes only.
 Whilst every care is taken in the preparation of this plan, please check all dimensions, shapes and compass bearings before making any decisions reliant upon them.
www.london58.com © 2026 hello@london58.com

Approximate Gross Internal Area = 142.8 sq m / 1537 sq ft

This plan is for layout guidance only. Not drawn to scale unless stated. Windows and door openings are approximate. Whilst every care is taken in the preparation of this plan, please check all dimensions, shapes and compass bearings before making any decisions reliant upon them. (ID767266)

Tom Barham

01932 591 618

thomas.barham@knightfrank.com

Knight Frank Weybridge

20 High Street

Weybridge, KT13 8AB

knightfrank.co.uk

Your partners in property

1. Particulars: These particulars are not an offer or contract, nor part of one. You should not rely on statements given by Knight Frank in the particulars, by word of mouth or in writing ("information") as being factually accurate about the property, its condition or its value. Neither Knight Frank nor any joint agent has any authority to make any representations about the property, and accordingly any information given is entirely without responsibility on the part of Knight Frank. 2. Material Information: Please note that the material information is provided to Knight Frank by third parties and is provided here as a guide only. While Knight Frank has taken steps to verify this information, we advise you to confirm the details of any such material information prior to any offer being submitted. If we are informed of changes to this information by the seller or another third party, we will use reasonable endeavours to update this as soon as practical. 3. Photos, Videos etc: The photographs, property videos and virtual viewings etc. show only certain parts of the property as they appeared at the time they were taken. Areas, measurements and distances given are approximate only. 4. Regulations etc: Any reference to alterations to, or use of, any part of the property does not mean that any necessary planning, building regulations or other consent has been obtained. A buyer must find out by inspection or in other ways that these matters have been properly dealt with and that all information is correct. 5. Fixtures and fittings: A list of the fitted carpets, curtains, light fittings and other items fixed to the property which are included in the sale (or may be available by separate negotiation) will be provided by the Seller's Solicitors. 6. VAT: The VAT position relating to the property may change without notice. 7. To find out how we process Personal Data, please refer to our Group Privacy Statement and other notices at <https://www.knightfrank.com/legals/privacy-statement>.

Particulars dated April 2026 Photographs and videos dated April 2026. All information is correct at the time of going to print. Knight Frank is the trading name of Knight Frank LLP. Knight Frank LLP is a limited liability partnership registered in England and Wales with registered number OC305934. Our registered office is at 55 Baker Street, London W1U 8AN. We use the term 'partner' to refer to a member of Knight Frank LLP, or an employee or consultant. A list of members names of Knight Frank LLP may be inspected at our registered office. If you do not want us to contact you further about our services then please contact us by either calling 020 3544 0692, email to marketing.help@knightfrank.com or post to our UK Residential Marketing Manager at our registered office (above) providing your name and address.

