

abbotFox



Darnell Close, Bradwell, Great Yarmouth
£215,000

“

We are a team of genuine individuals who hold a deep passion for both property and marketing. Collectively, we bring over 70 years of experience in the property market of Norfolk and Suffolk. Our affection for both counties runs deep, and we are enthusiastic about sharing our passion with you.

Colin McKenzie | **Branch Partner**



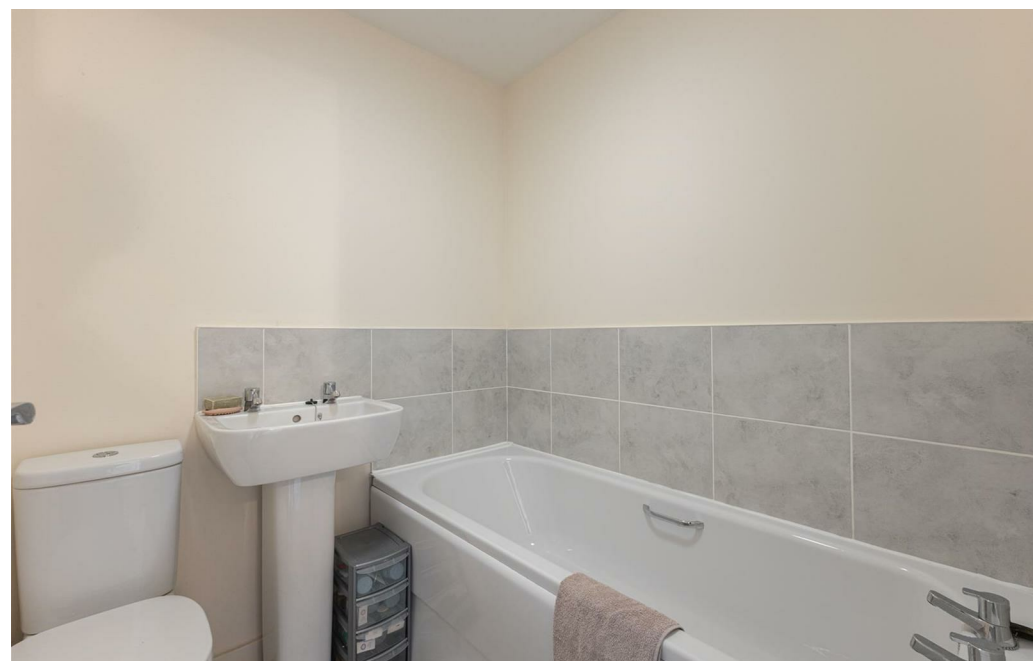




THE DETAIL_____

abbotFox presents this modern and well-presented mid-townhouse, on a popular development in Bradwell, close to shops and amenities as well as schools for all ages.

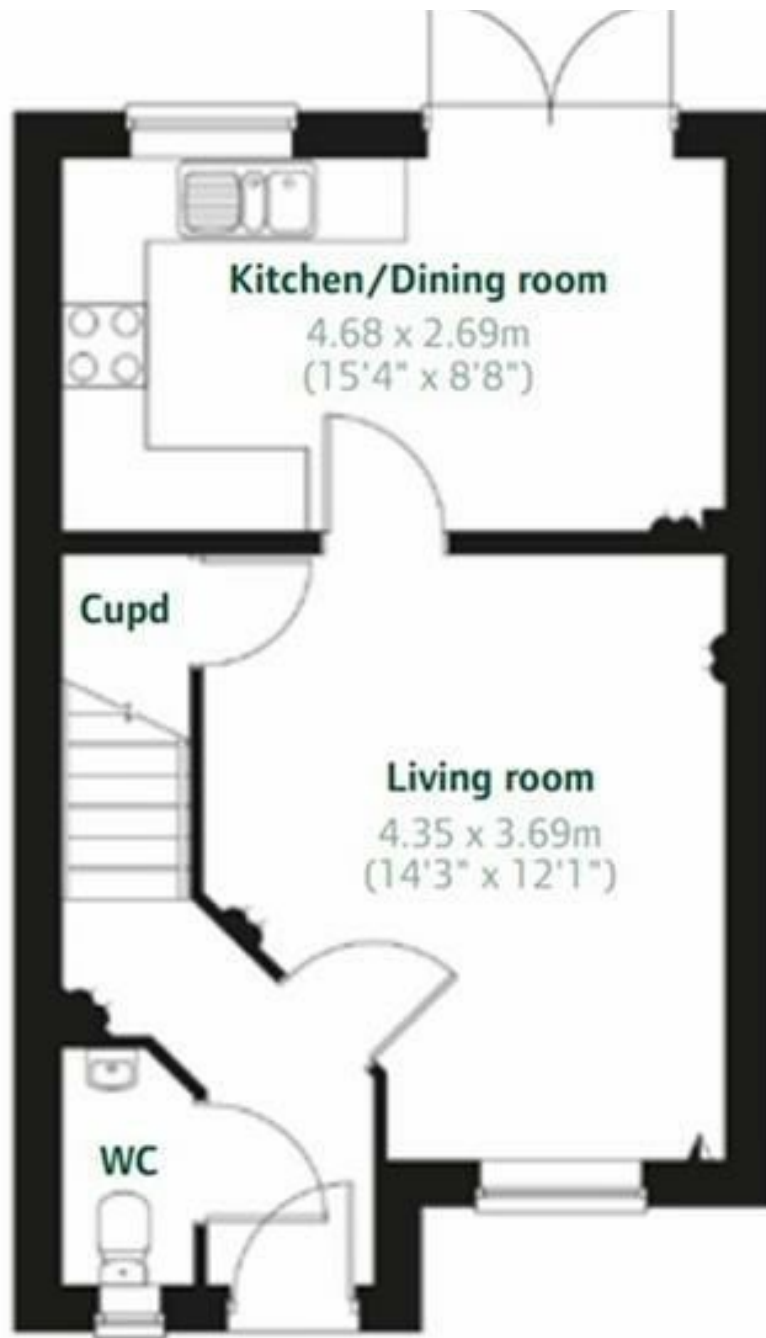
The property comprises of entrance hall, cloakroom, lounge, kitchen/diner, first floor landing, three bedrooms with en suite to master bedroom, bathroom, front driveway with two parking spaces, enclosed rear garden, gas central heating and double glazing.







THE HIGHLIGHTS__

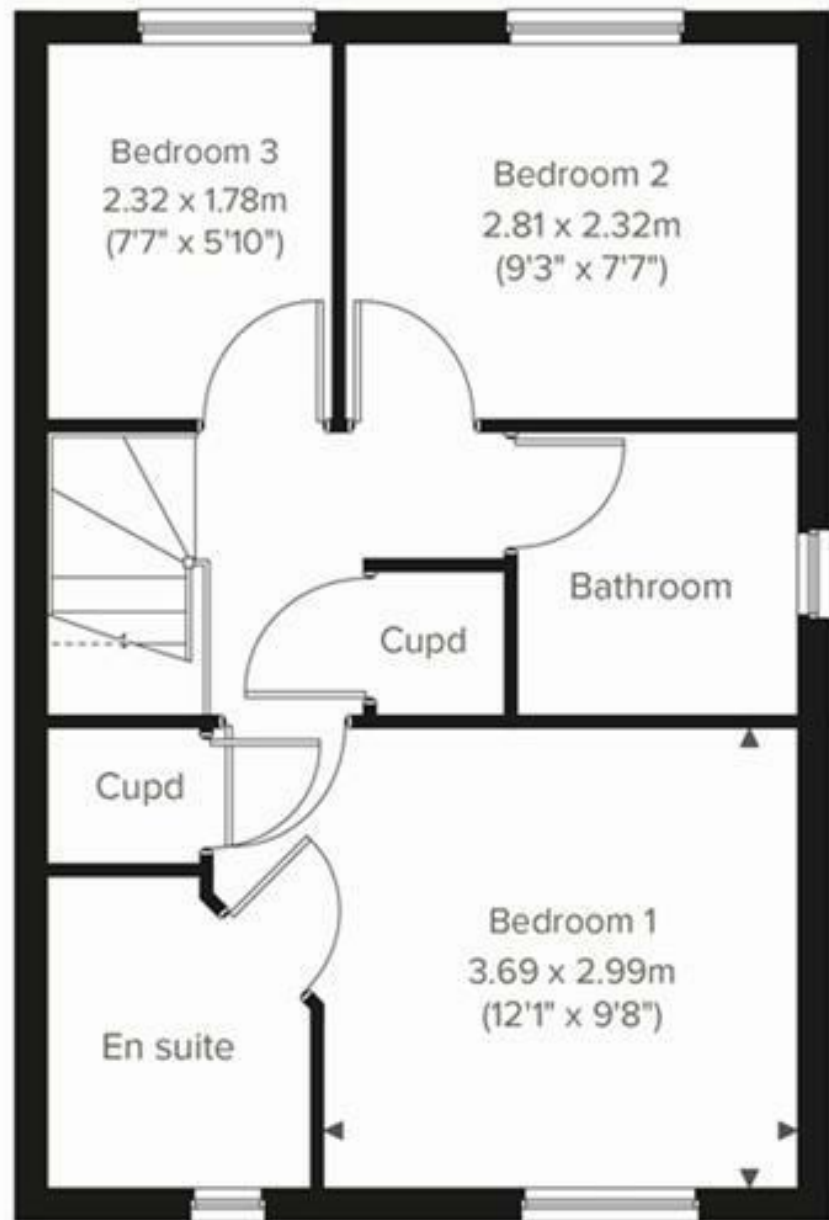


Let's talk

01603 660000

sales@abbotfox.co.uk

@abbotfox



EPC RATING -

Disclaimer – In accordance with the Property Misdescriptions Act, the company abbotFox gives notice that all descriptions, references to condition, necessary permissions for use and other details are given in good faith and believed to be correct, but any purchaser should not rely on them as statements of fact, and must satisfy themselves by inspection or other means, as to their accuracy.