



Woods Mews, W1K

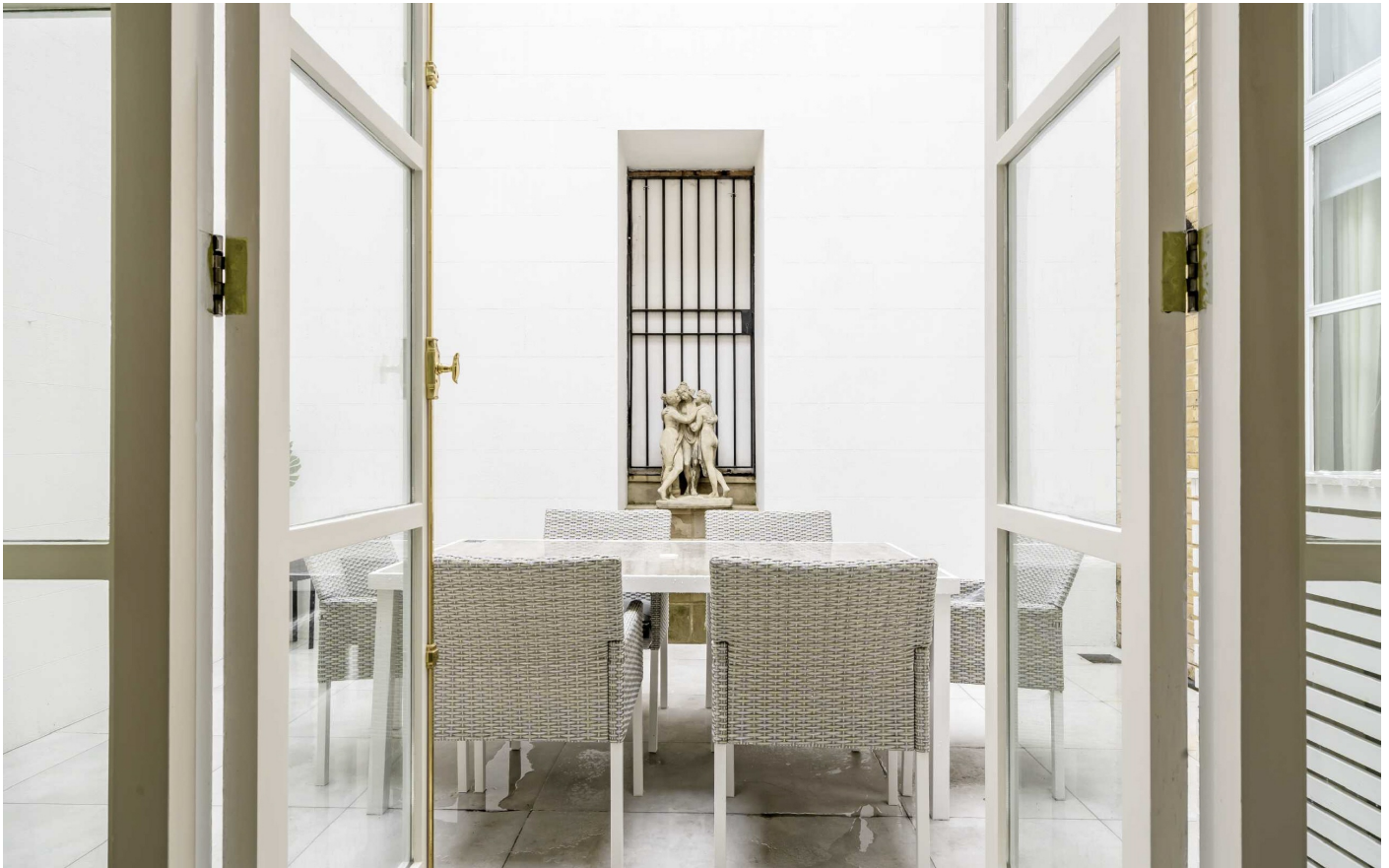
£1,750 Per week

A recently refurbished split level two double bedroom maisonette on the ground and first floors of this smart building located on a quiet mews just off Park Lane.

Woods Mews is located between Park Lane and Park Street close to Hyde Park.

Features

Recently Refurbished
Two Double Bedrooms
Two Modern Bathrooms
Private Courtyard
Wood Flooring
Air Conditioning



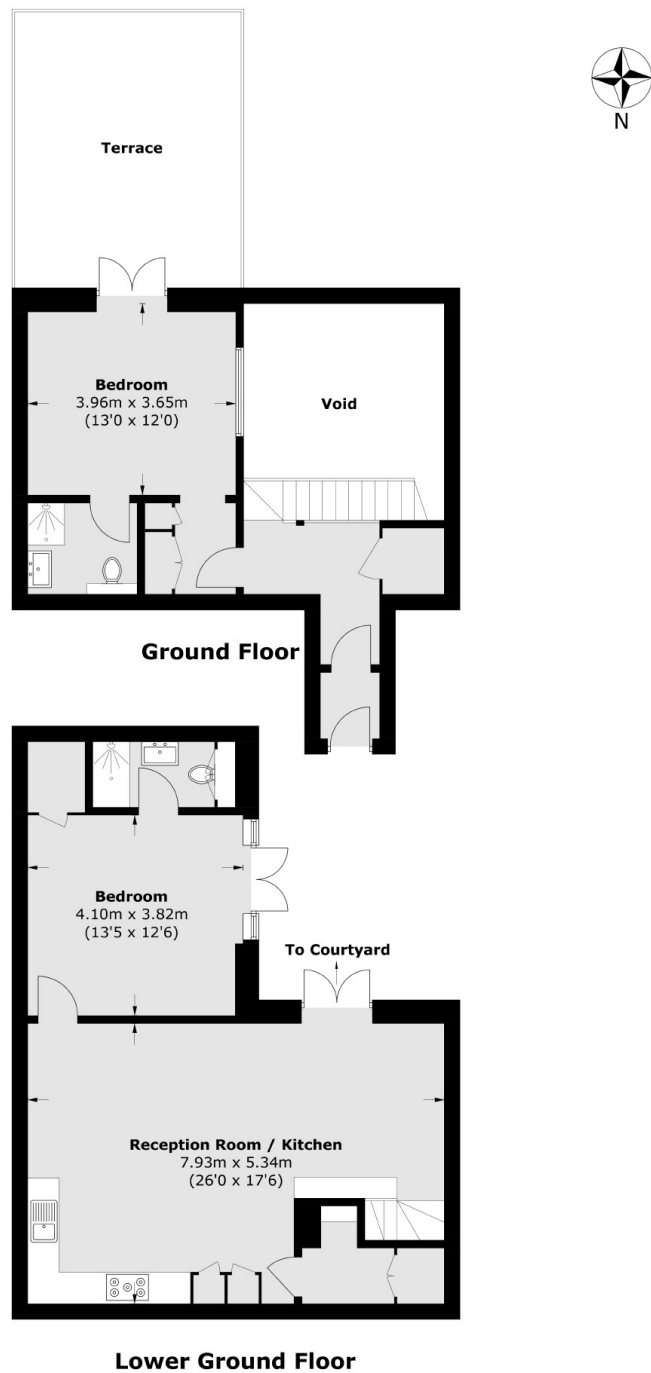
Woods Mews, W1K

This attractive apartment has been finished to a high standard with solid wood flooring throughout and benefits from a double height ceiling and galleried landing in the reception room with access to a private courtyard.

Accommodation comprises, entrance hall, open plan fully integrated kitchen / reception room, two double bedrooms, two en suite bathrooms and private secluded patio.



Woods Mews, London, W1K



Total area (approx.): 98.3 sq. m (1,058.0 sq. ft)
Terrace area (approx.): 22.7 sq. m (244.3 sq. ft)
(Excluding Void)

Dexters

Wetherell
102 Mount Street
London
W1K 2TH
Lettings
020 7529 5588

Energy Rating: C. We aim to make our particulars both accurate and reliable. However they are not guaranteed; nor do they form part of an offer or contract. If you require clarification on any points then please contact us, especially if you're traveling some distance to view. Please note that appliances and heating systems have not been tested and therefore no warranties can be given as to their good working order.

 **RICS** | Regulated
Estate Agent
and Letting Agent

[dexters.co.uk](https://www.dexters.co.uk)