



## Press Road, NW10

### £325,000

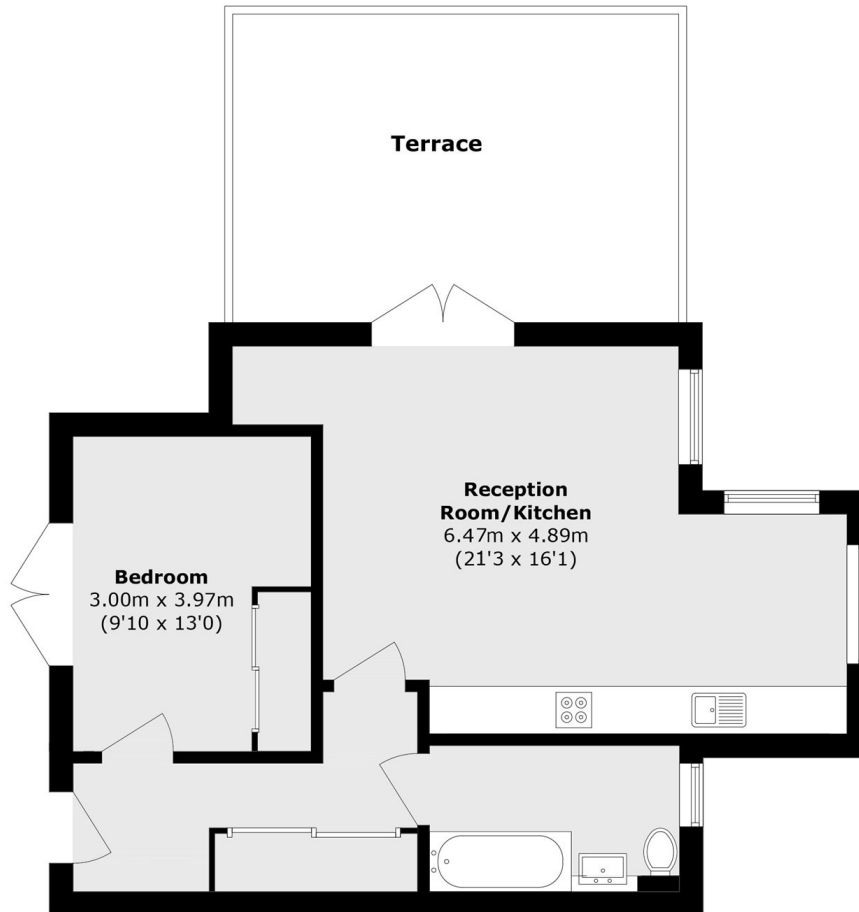
This one bedroom, first floor apartment features a spacious open plan living area with a modern kitchen and one double bedroom. The property further benefits from having a private terrace and underground parking.  
\*SHARED OWNERSHIP also available £83,750 (25%)\*

Located on a residential street nestled in vibrant Neasden, with its lovely open spaces including Brent Reservoir and Welsh Harp Close. Neasden underground station (Jubilee line) is situated 0.6 miles away.

### Features

- Shared Ownership
- First Floor Apartment
- One Bedrooms
- Lift Access
- Private Balcony
- Underground Parking

# Press Road, London, NW10



Total area (approx.): 56.0 sq. m (602.7 sq. ft)

Terrace area (approx.): 21.8 sq. m (234.6sq. ft)