



## St. Georges Way, SE15

£325,000

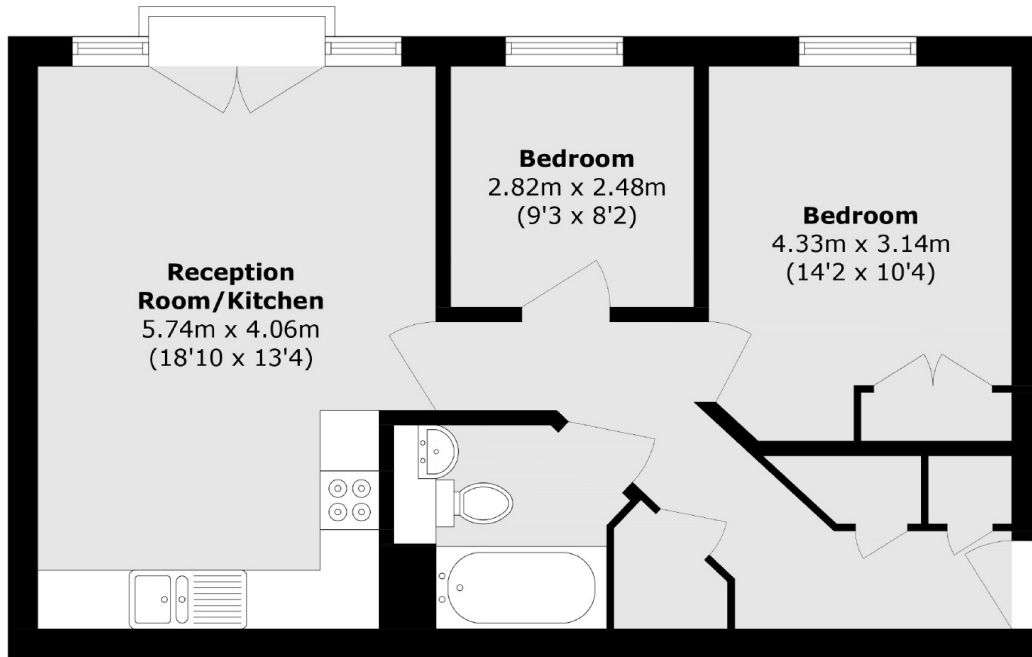
A two-bedroom purpose-built flat, ideally located on St George's Way in the vibrant heart of Peckham. Spanning a generous 613 square feet and being sold with no onward chain.

St. Georges Way offers a peaceful yet well-connected location, with easy access to transport, local amenities, and the green expanses of Burgess Park. It's a perfect spot for those looking for a tranquil residential setting while staying close to the heart of London. Peckham Rye Station (Overground and National Rail services) provides excellent connections to central London.

### Features

- Two Double Bedrooms
- Purpose Built
- No Onward Chain
- Good Storage
- Great Location
- Open Plan Living

# St. Georges Way, London, SE15



Total area (approx.): 57.0 sq. m (613.5 sq. ft)