

Brewhouse Yard, EC1V

£3,000 Per calendar month

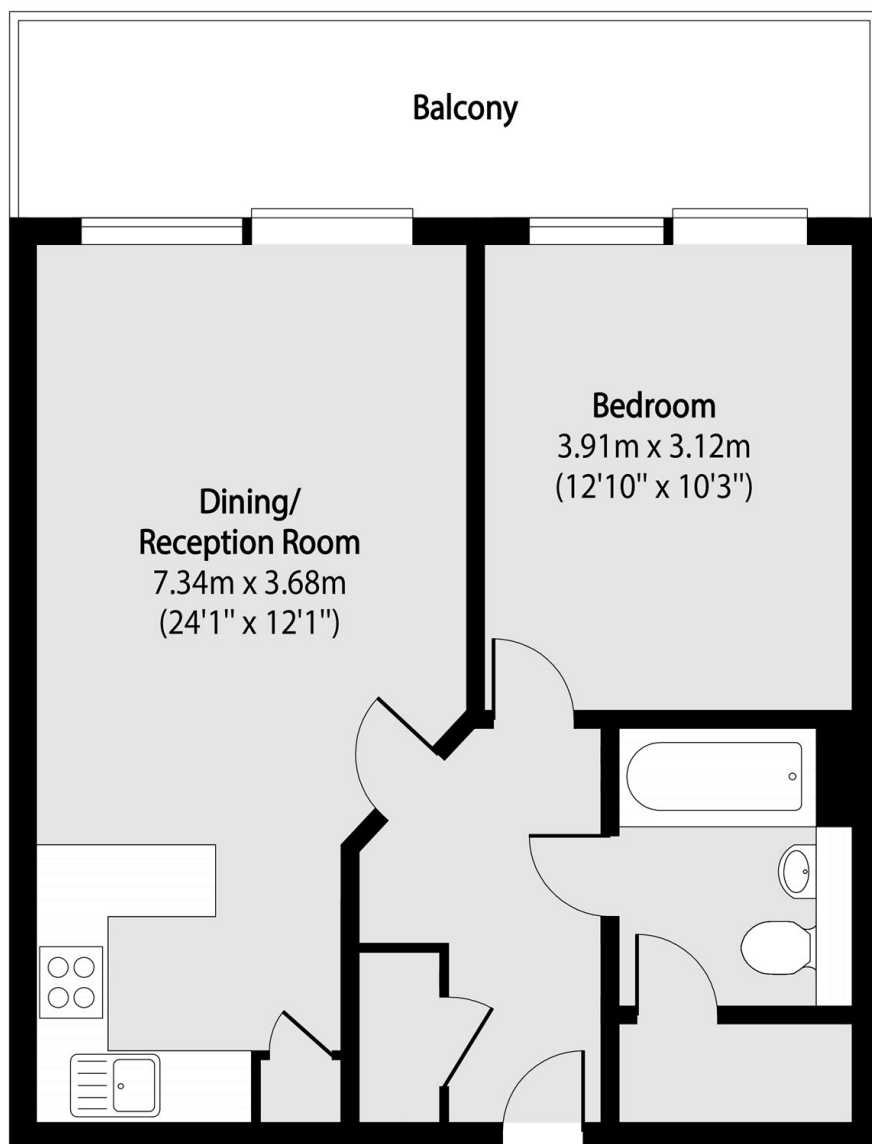
A bright one bedroom with floor to ceiling windows has access to large private terrace, that spans the full width of the apartment, overlooking Brewery Square and has access to a 24hr concierge.

Brewhouse Yard is a secure development just off St John's Street with two local supermarkets and Farringdon and Barbican Underground stations less than half a mile away.

Features

- One Bedroom
- Wooden Floors Throughout
- Large Terrace
- 24 Hours Concierge
- Bike Storage

Brewhouse Yard,
London, EC1V



Total area (approx): 51.74 sq m (557 sq. ft)

Balcony total area (approx): 12.91 sq m (139 sq. ft)