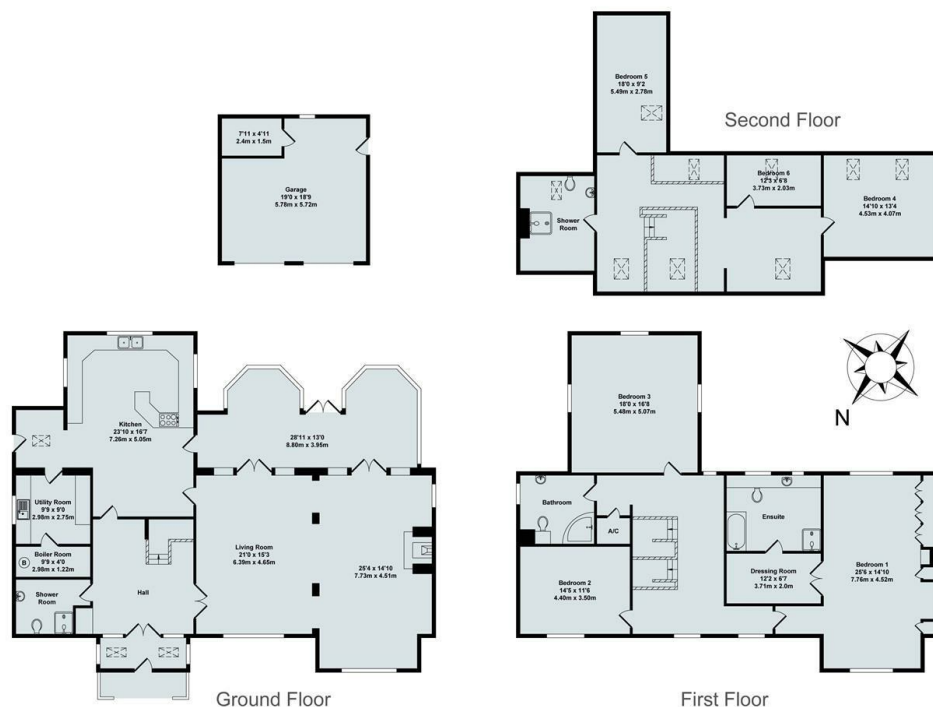




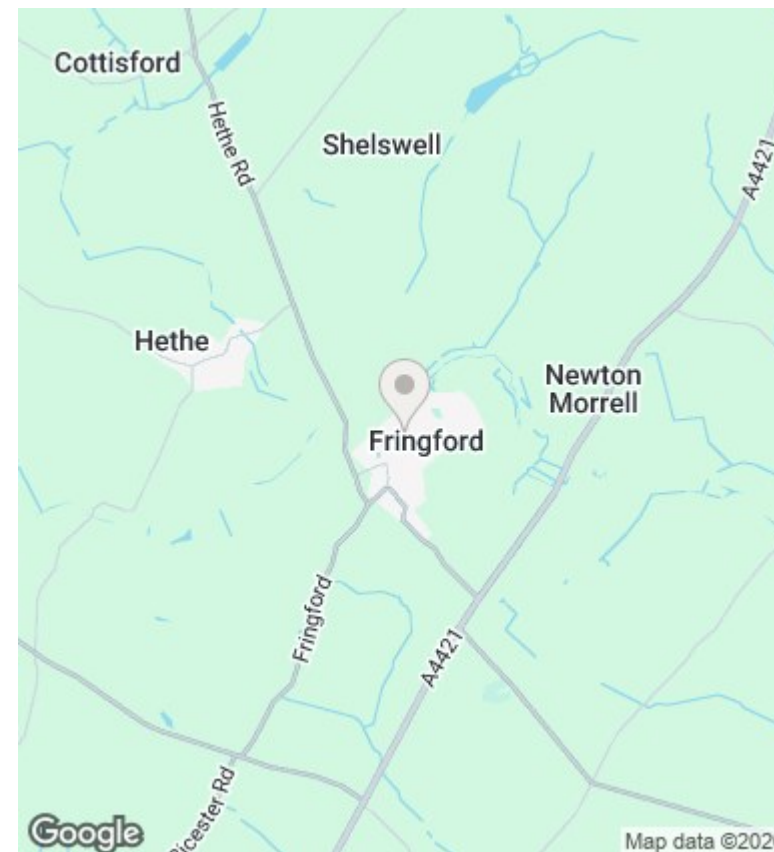
Hadfield House Little Paddock, Fringford, Bicester, OX27 8EJ

£3,250 Per Month - 25th April 2026.

- Six bedroom detached house
- South facing gardens
- Double garage
- Mains water and electricity
- Four bathrooms
- Oil fired central heating
- Council Tax Band G
- Impressive conservatory
- Off street parking
- EPC rating D



Total Approx. Floor Area 4820 Sq.Ft. (447.80 Sq.M.)
 All items illustrated on this plan are included in the "Total Approx Floor Area"



Directions

Viewings

Viewings by arrangement only. Call 01869 226888 to make an appointment.

Council Tax Band

G

EPC Rating:

D

Energy Efficiency Rating		Current	Potential
<i>Very energy efficient - lower running costs</i>			
(92 plus)	A		
(81-91)	B		
(69-80)	C		
(55-68)	D	68	72
(39-54)	E		
(21-38)	F		
(1-20)	G		
<i>Not energy efficient - higher running costs</i>			
England & Wales		EU Directive 2002/91/EC	