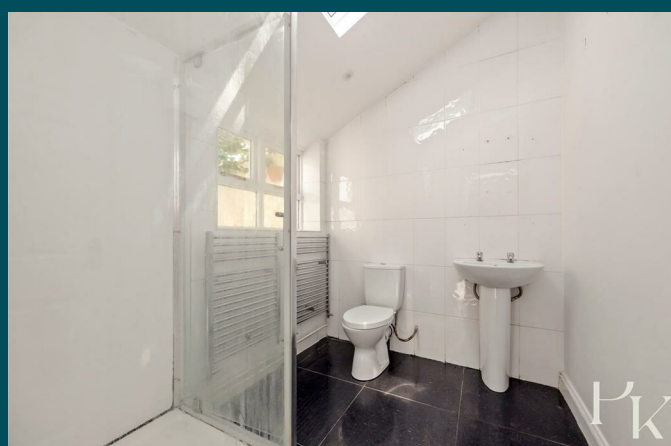
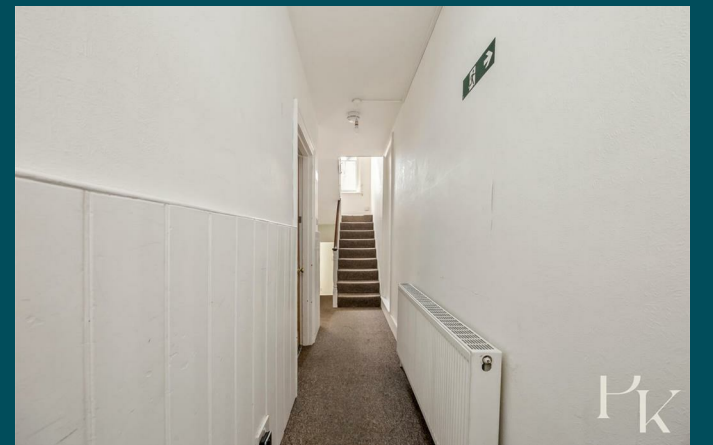




2 Howard Terrace
Brighton, BN1 3TR



2 Howard Terrace

Brighton, BN1 3TR

Offers in excess of £600,000

A spacious and versatile four-bedroom, two bathroom period home, ideally positioned in the highly sought-after Seven Dials district of Brighton, just moments from Brighton Mainline Station and the city centre.

Arranged over three floors and extending to approximately 1,226 sq ft, the property offers well-balanced accommodation with plenty of character and flexibility. The ground floor comprises two generous double bedrooms, including an attractive bay-fronted principal room, together with a family bathroom.

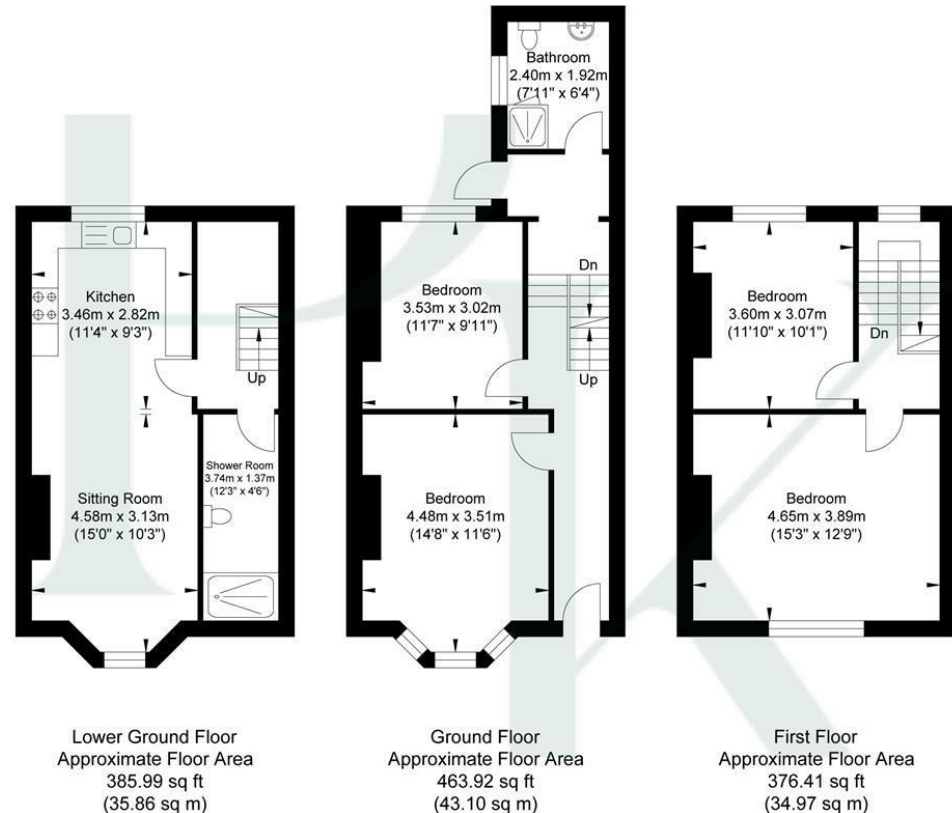
The lower ground floor provides a superb open-plan kitchen and living space, creating an excellent area for both everyday living and entertaining. This floor also benefits from a separate shower room and access to a private rear courtyard garden.

The first floor offers two further well-proportioned double bedrooms, making the property perfectly suited to families, those working from home, or investors seeking a strong rental opportunity.

Howard Terrace enjoys an enviable location tucked away in a peaceful residential setting, yet is only a short stroll from the independent cafés, restaurants and amenities of Seven Dials. Brighton Station is within easy walking distance, providing excellent commuter links to London and beyond, while the seafront and vibrant city centre are also close at hand.



Howard Terrace



Approximate Gross Internal Area = 113.93 sq m / 1226.32 sq ft
Illustration for identification purposes only, measurements are approximate, not to scale.

Energy Efficiency Rating	
Current	Potential
Very energy efficient - lower running costs	
(92 plus) A	
(81-91) B	
(69-80) C	
(55-68) D	
(39-54) E	
(21-38) F	
(1-20) G	
Not energy efficient - higher running costs	
	89
	63
England & Wales	EU Directive 2002/91/EC

Environmental Impact (CO ₂) Rating	
Current	Potential
Very environmentally friendly - lower CO ₂ emissions	
(92 plus) A	
(81-91) B	
(69-80) C	
(55-68) D	
(39-54) E	
(21-38) F	
(1-20) G	
Not environmentally friendly - higher CO ₂ emissions	
England & Wales	EU Directive 2002/91/EC

Pearson
Keehan