



**Cedarville Gardens, SW16**

**£925,000**

**Dexters**



## Cedarville Gardens, SW16

In great condition throughout, is this charming four bedroom family home. This property has a spacious double reception currently laid out as a large living and dining area. The front bay has fitted shutters and a built in bench with the furniture all focused towards the feature fireplace, creating a cosy yet social space. The dining area has fitted bookshelves and leads onto the modern kitchen and utility. There are also modern double doors onto the sunny landscaped garden as well as a downstairs w/c.

Upstairs there are four bedrooms with the smallest currently being used as a study, these are all serviced by the modern family bathroom. The top floor is a large bedroom with eaves storage but could be further extended to create an en-suite if required and subject to the relevant permissions. This home has a great feel throughout and is perfect for any growing family.

The property is located on the charming Cedarville Gardens- a prime residential street in the heart of Streatham common. Mainline rail links are nearby with direct links into the City as are the open spaces of Streatham Common and the Rookery.

### Features

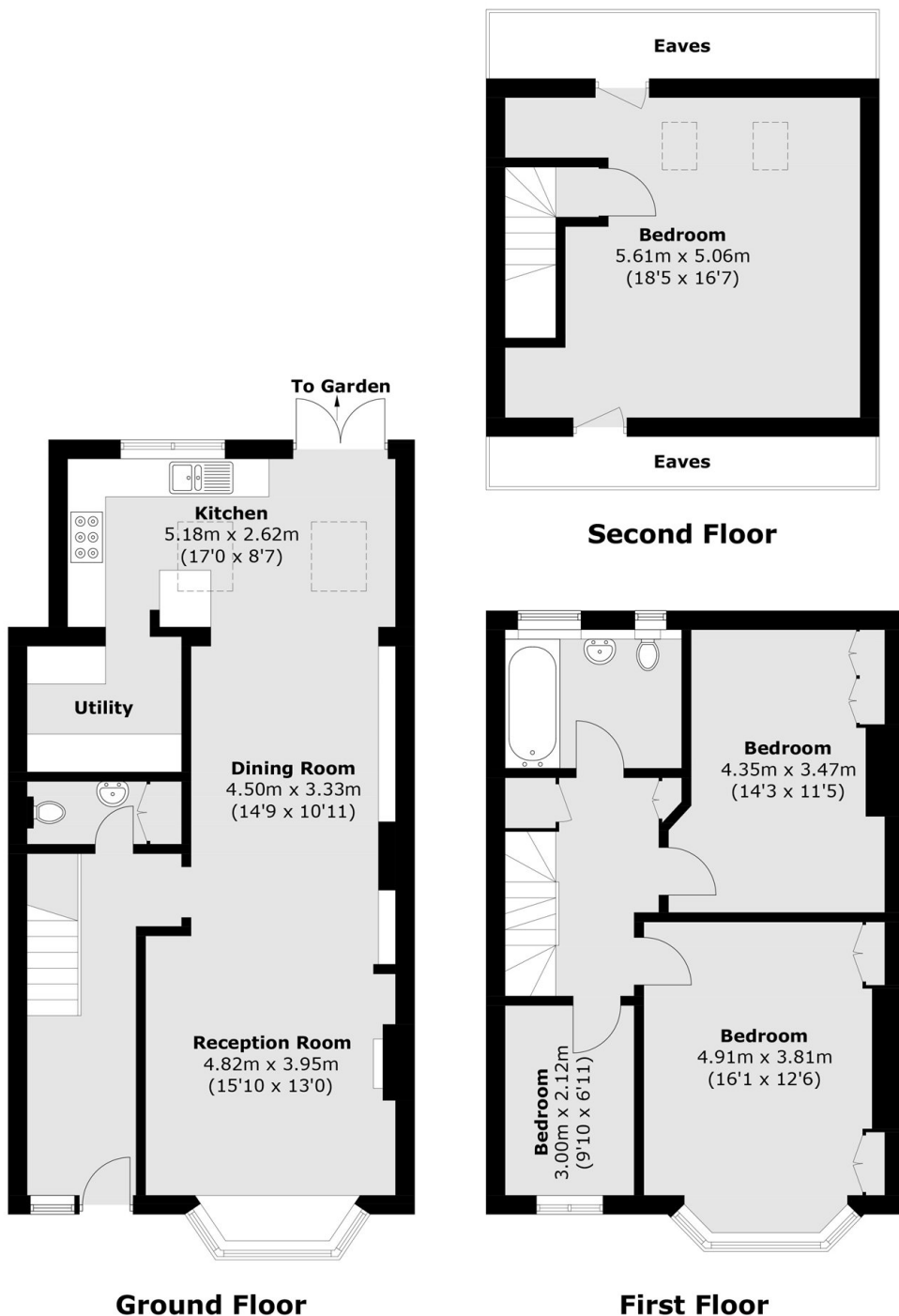
- Four Bedrooms
- Landscaped Garden
- No Onward chain
- Open-Plan Living
- Utility Room
- Great Condition







# Cedarville Gardens, London, SW16



Total area (approx.): 151.3 sq. m (1628.5 sq. ft)  
(Excluding Eaves)