



01452 690553



sales@applebys.estate



www.applebysestateagents.co.uk



## 56 Sheens Meadow

, Newnham, GL14 1BP

**£215,000**



This TWO Bedroom modern home offer lots of potential, an ideal first time buy situated in the extremely sought after Village of Newnham on Severn\*\*\*CHAIN FREE\*\*\*

Newnham on Severn has good links via the A48 with Gloucester and the West Midlands, South West and South Wales.



## Entrance Hall

Kitchen 11'0 x 6'3 (3.35m x 1.91m)

Lounge/Dining Room 13'11 x 12'10 (4.24m x 3.91m)

Bedroom 1 10'10 x 10'7 (3.30m x 3.23m)

Bedroom 2 13'1 x 8'8 (3.99m x 2.64m)

## Bathroom

## OUTSIDE

Parking is to the rear of the property in turn leads to the en bloc garage.

Walkway gives access to the front of the property.

## Services

Mains drainage, gas central heating

Forest of Dean District tax band B

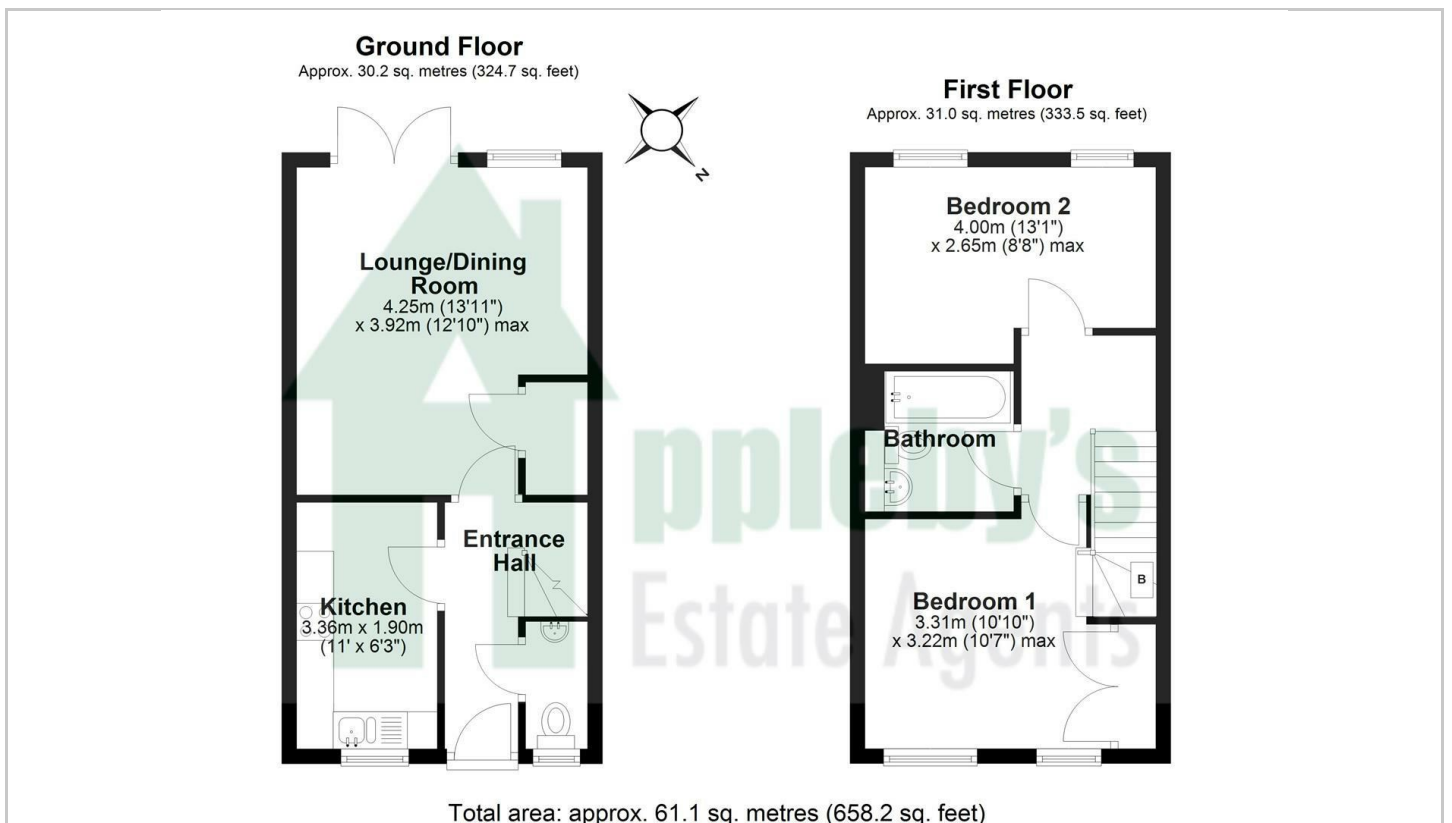
## Tenure

Freehold

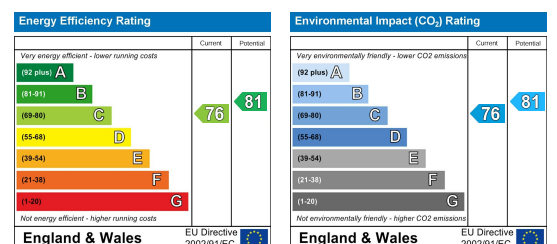
## Area Map



## Floor Plans



## Energy Efficiency Graph



These particulars, whilst believed to be accurate are set out as a general outline only for guidance and do not constitute any part of an offer or contract. Intending purchasers should not rely on them as statements of representation of fact, but must satisfy themselves by inspection or otherwise as to their accuracy. No person in this firm's employment has the authority to make or give any representation or warranty in respect of the property.