



JOWEBSTER

Apartment B82
Albion Riverside, SW11



Property Attributes

- 2 Bedrooms
- South Facing
- Eighth Floor
- Open plan kitchen and Living Area
- 24-hour Security
- Gym
- Indoor Swimming Pool
- Secure Underground parking



Terms

- Price: £950,000
- Borough: London Borough of Wandsworth
- Tenure: Leasehold approx. 960 years remaining
- Service Charge: £8,200 per annum
- Ground Rent: £275 per annum
- Council Tax Band: Band G



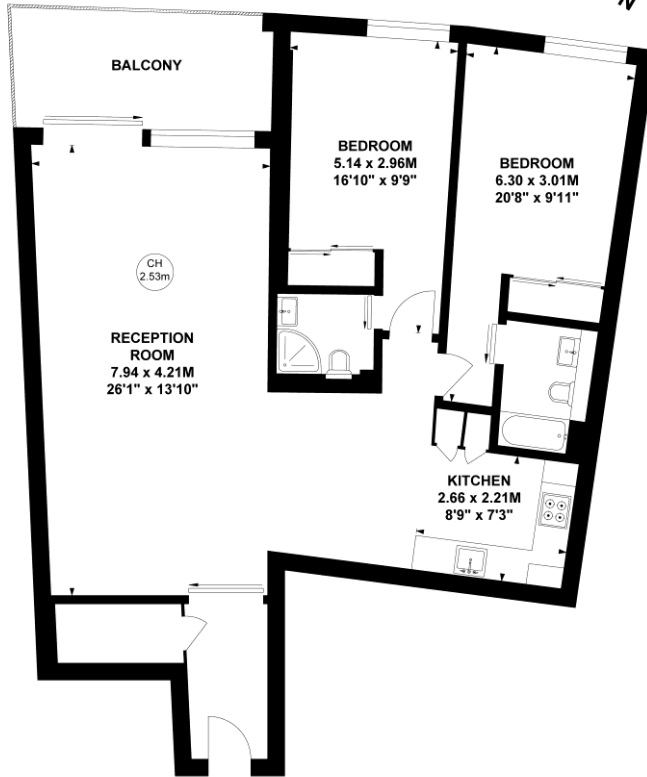
Albion Riverside, SW11

Approximate gross internal area

91.64 sq m / 986 sq ft

Key :

CH - Ceiling Height



Eighth Floor

This plan is not to scale and must be used as layout guidance only. All measurements and areas are approximate and should not be relied upon to provide accurate information. This plan must not be relied upon when making property valuations, design considerations or any other such relevant decisions. We accept no responsibility or liability (whether in contract, tort or otherwise) in relation to any loss whatsoever arising from or in connection with any use of this plan or the adequacy, accuracy or completeness of it or any information within it.

+44 (0) 20 7349 7055
sales@jowebster.com

Misdescription Act

We wish to advise prospective purchasers that these sales particulars are believed to be correct, but their accuracy is in no way guaranteed, nor do they form any part of contract. We have not carried out a detailed survey nor tested the services, appliances or specific fittings. Measurements are approximate.