



Apple Meadow View, Park Hayes

Leigh Upon Mendip, BA3 5GP

£289,950

Vendors comments - "We purchased the house as our first home, drawn to its gorgeous views, peaceful surroundings, and the charm of village life. Over the years, it naturally became a wonderful family home, with a great-sized garden, plenty of nearby walking fields, and a lovely play park."

Immaculate accommodation

Countryside feel

Modern accommodation

Solar panels (owned)

Driveway parking x2

South facing garden

Viewing

Please contact our Bath Stone Property (MSN) Office on 01761 360144

if you wish to arrange a viewing appointment for this property or require further information.



2



1

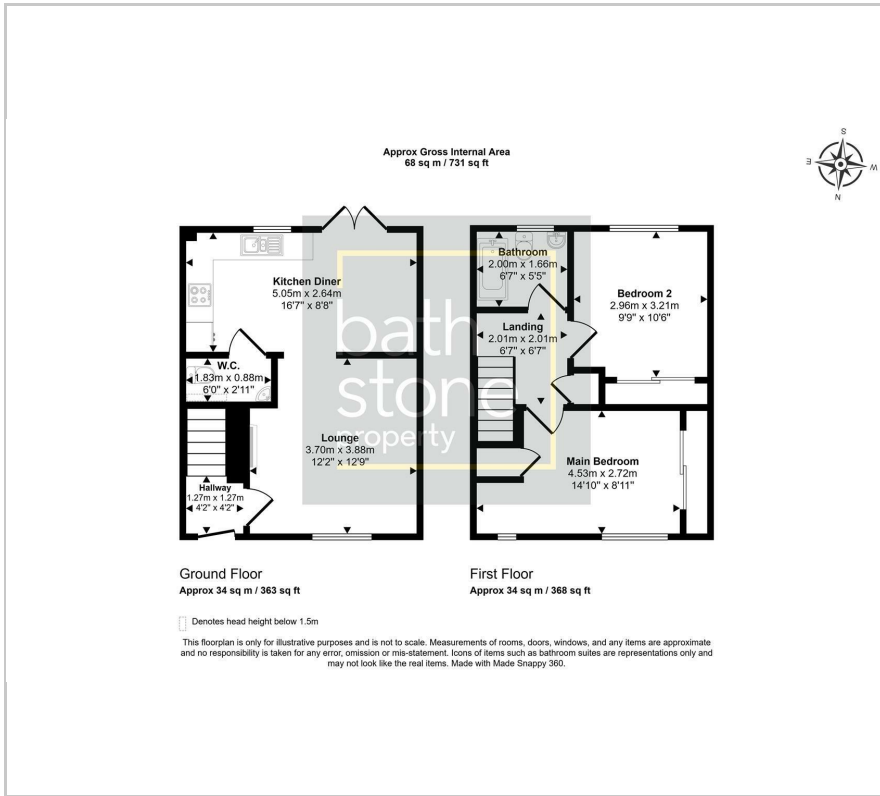


2

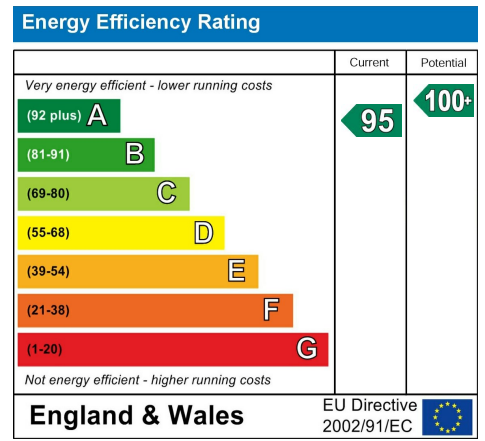


A

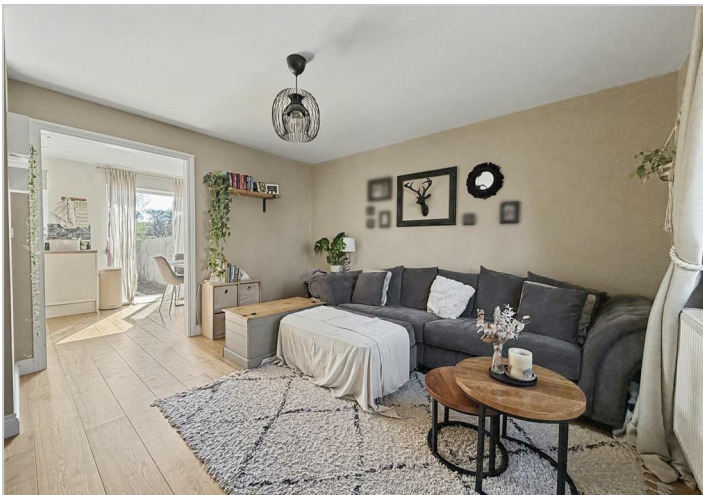
Floor Plan



Energy Efficiency Graph



Please give us Feedback



These particulars, whilst believed to be accurate are set out as a general outline only for guidance and do not constitute any part of an offer or contract. Intending purchasers should not rely on them as statements of representation of fact, but must satisfy themselves by inspection or otherwise as to their accuracy. No person in this firm's employment has the authority to make or give any representation or warranty in respect of the property.