



Princes House

37-39 Kingsway, WC2B

Asking Price £745,000

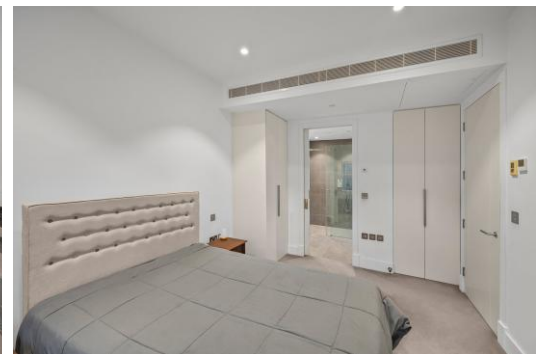
Live at the Centre of London — Where Covent Garden, World-Class Universities and the West End Meet

Positioned in the very heart of Central London, this beautifully presented one-bedroom apartment at Princes House offers an exceptional opportunity for owner-occupiers, international buyers, parents investing for students, and savvy investors seeking premium Zone 1 real estate.

Located moments from London School of Economics and Political Science, King's College London, Covent Garden and the West End, the apartment combines luxury, convenience and outstanding rental appeal in one of London's most connected and culturally vibrant neighbourhoods.

This bright and spacious apartment features a stylish open-plan kitchen with high-specification fittings, an elegant reception room with attractive wooden flooring, a tranquil double bedroom with generous fitted wardrobes, and a sleek contemporary shower room. Residents also benefit from a secure entrance and on-site porter service, ideal for professionals, students and international residents seeking comfort and peace of mind.

CHESTERTONS



Princes House

37-39 Kingsway, WC2B

- • Bright one bedroom apartment within a secure portered development
- • Stylish open plan kitchen with high spec fixtures and fittings
- • Good size reception with attractive wooden floors
- • Double bedroom with ample fitted wardrobes
- • Immaculate shower room
- • Only a short distance from Holborn station
- • Moments from Covent Garden and The West End



Perfectly positioned near Holborn, Covent Garden and Temple stations, the property provides effortless access across London's financial, academic and entertainment districts.

Tenure: Leasehold 987 years
Service Charge: £4,167
Ground Rent: £350
Local Authority: City Of Westminster
Council Tax Band: E

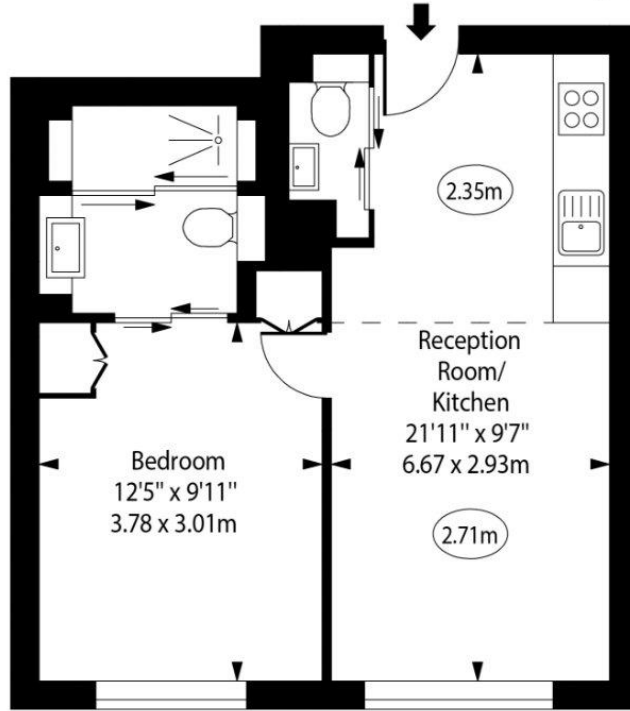
Score	Energy rating	Current	Potential
92+	A		
81-91	B		
69-80	C	75 C	76 C
55-68	D		
39-54	E		
21-38	F		
1-20	G		

Chestertons Covent Garden Sales

196 Shaftesbury Avenue
London
WC2H 8JF
coventgarden@chestertons.co.uk
020 3040 8300
chestertons.co.uk

Princes House, Kingsway

○ - Ceiling Height



Fifth Floor

Approx Gross Internal Area 417 Sq Ft - 38.74 Sq M

Every attempt has been made to ensure the accuracy of the floor plan shown. However, all measurements, fixtures, fittings, and data shown are approximate interpretations and for illustrative purposes only. Measured according to the RICS. Not To Scale.

www.goldlens.co.uk

Ref. No. 031121D

