

Heath Court

Uxbridge • Middlesex • UB8 1NU

PCM: £1,400 PCM



coopers
est 1986

Well presented two bedroom maisonette situated on a quiet and popular development within walking distance of Uxbridge Town Centre, Uxbridge Metropolitan and Piccadilly Underground Station and easy access to the A40/M40/M25.

Comprising of two bedrooms, spacious lounge, separate modern fitted kitchen with appliances, bathroom and storage space. Benefits from double glazing, gas central heating and parking.

Short distance to Uxbridge

Storage space

Local Amenities

Close to the Metropolitan and Piccadilly

Furnished

Parking

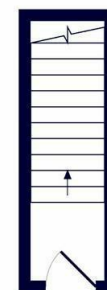
Spacious lounge

Close to the A40/M40

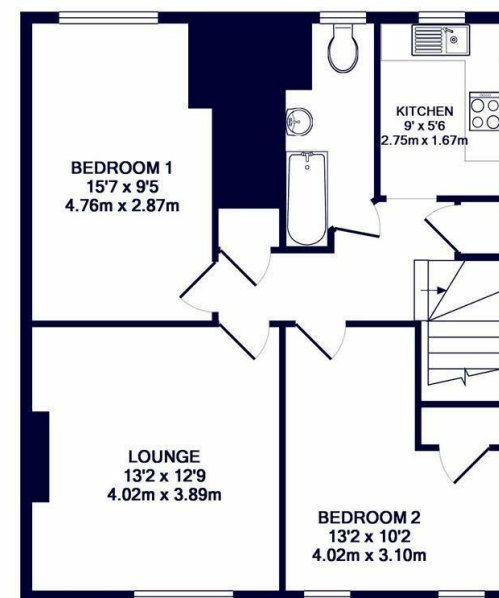
Great transport links

Available Date

27th January 2026



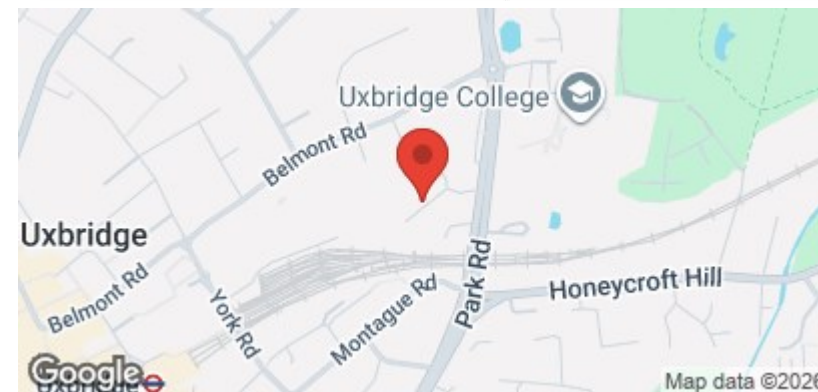
ENTRANCE FLOOR
APPROX. FLOOR
AREA 58 SQ.FT.
(5.4 SQ.M.)



1ST FLOOR
APPROX. FLOOR
AREA 648 SQ.FT.
(60.2 SQ.M.)

TOTAL APPROX. FLOOR AREA 706 SQ.FT. (65.6 SQ.M.)

Whilst every attempt has been made to ensure the accuracy of the floor plan contained here, measurements of doors, windows, rooms and any other items are approximate and no responsibility is taken for any error, omission, or mis-statement. This plan is for illustrative purposes only and should be used as such by any prospective purchaser. The services, systems and appliances shown have not been tested and no guarantee as to their operability or efficiency can be given
Made with Metropix ©2017



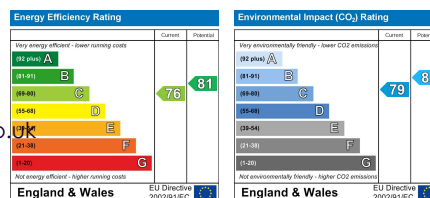
coopers
est 1986

01895 257 566

**1 Vine Street, Uxbridge,
Middlesex, UB8 1QE**

propertymanagement@coopersresidential.co.uk

CoopersResidential.co.uk



Important Notice: These particulars, whilst believed to be accurate are set out as a general outline only for guidance and do not constitute any part of an offer or contract. Intending purchasers should not rely on them as statements or representation of fact, but must satisfy themselves by inspection or otherwise has the authority to make or give any representation or warranty in respect of the property.