



Brodlove Lane, E1W

£375,000

 3  1  1  D

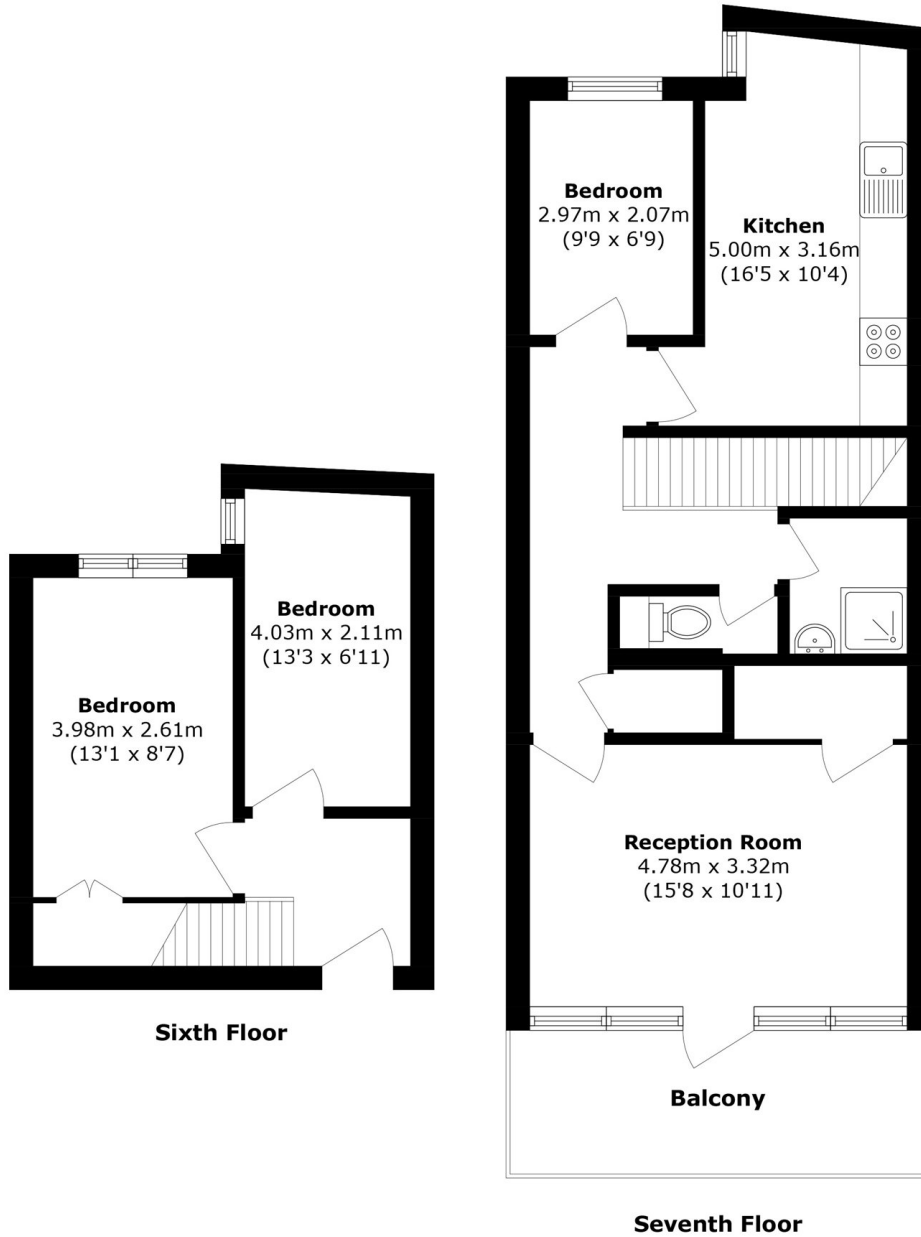
- Three Bedroom Apartment
- Split-Level
- Canary Wharf Views
- Balcony
- Lift
- Chain Free



Ea2 are pleased to present this split level three bedroom apartment in Roslin House. The property offers Canary Wharf & City views. Separate Kitchen configuration offering lots of space for entertaining. Being offered chain free.

Located approximately 0.4 miles from Limehouse station offering links to the City and on the c2c line. Shadwell station is also approximately 0.4 miles which offers the overground line. Local bus routes available and the cycle highway located on Cable Street offers access into the City of London.





Total area (approx.): 82.2 sq. m (884.8 sq. ft)

Balcony area (approx.): 8.97 sq. m (96.5 sq. ft)

35A Wapping High Street,
London, E1W 1NR
020 7665 5589
ea2group.com