

Ahern Close  
Weavers Grange  
Bozeat  
NN29 7FE

£335,000



OSCAR JAMES

...expect excellence

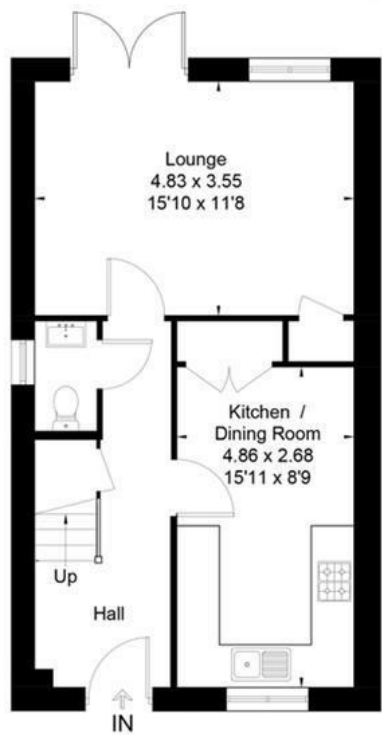


# FLOOR PLANS

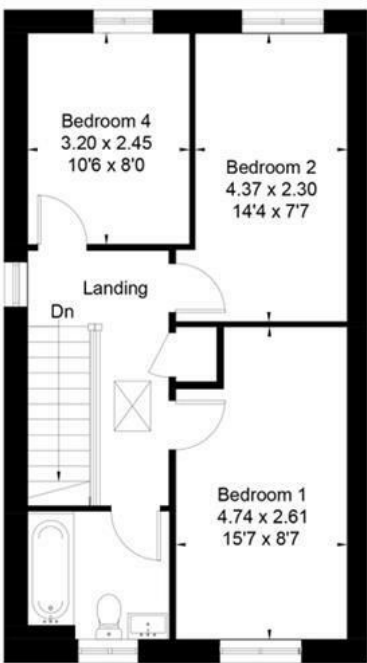
## WEAVERS GRANGE

Approximate Floor Area = 87 sq m / 936 sq ft

House Type C



Ground Floor



First Floor



## AT A GLANCE...



custom text 1



custom text 4



custom text 2



custom text 5



custom text 3



custom text 6



This floor plan has been drawn in accordance with RICS Property Measurement 2nd edition.  
All measurements, including the floor area, are approximate and for illustrative purposes only @djd.london #80098





# WHAT'S GREAT?

EXCITING CASHBACK INSENTIVE UPON COMPLETION, WORTH £10,000 SUBJECT TO T&C's

This brand new home 'The Cartwright' is currently under construction by locally renowned, award winning developers, Brampton Valley Homes and is due to be build complete early 2025.

Boasting both spacious accommodation and a ultra-high-end finish enjoying 936 sq. ft. of internal accommodation which promises to 'WOW' from the moment you step inside

In brief the accommodation comprises: entrance hall, downstairs cloakroom, lounge, and a open kitchen/dining Room.

To the first floor are are Three well appointed bedrooms and a family bathroom.

The property further benefits from front & rear gardens, and off road parking.

Developers 'Brampton Valley Homes' are fast becoming recognized as the area's leading

independent builders. They pride themselves on their exceptional attention to detail and market leading internal finishes.

This lovely development named Weavers Grange is an exclusive development of just 40 homes, nestled away at the entrance of this most sought-after Northamptonshire village of Bozeat which enjoys a wide range of local amenities along with excellent road links close by.

Direct access to London by rail in well under an hour is available from a choice of local stations - Bedford, Wellingborough and Northampton.

Each home on the development boasts Integrated kitchen appliances to include oven & combi-microwave, hob & extractor, fridge-freezer, dishwasher and wine cooler, media plates in the lounge and master bedroom, TV points to all bedrooms and either a prewired or installed EV Charging.

For more information or to arrange your internal inspection contact sole selling agents Oscar James today.

\*\*Agents note, please be advised that there is an annual service charge of £371.60 \*\*

...expect excellence



# SELLER'S SECRET



Why we like it....

OSCAR JAMES

Central Hall 1a High Street, | Wellingborough |  
NN8 4HT  
01933 830300  
[www.oscar-james.com](http://www.oscar-james.com)

To buy or not to buy....

---

---

---

---

---