



Chandlers Avenue, Greenwich, London, SE10 0SN



# Chandlers Avenue, Greenwich SE10

Leasehold (115 years remaining)

Charming first floor apartment with private terrace in historic Greenwich, moments from the Royal Naval College and Greenwich Park and benefits from an allocated off street parking space.

## Key Features

- Private terrace
- 1 Bedroom, 1 Bathroom
- Beautifully presented
- Council Tax: **B**
- Service Charge: **£4,572 P/A**
- Ground Rent: **£100 P/A**
- Fantastic transport links
- EPC: **B**

Situated in the heart of Greenwich's prestigious maritime quarter, this delightful apartment offers a rare opportunity to own a piece of history in one of London's most cherished UNESCO World Heritage locations. The property benefits from its own private terrace overlooking peaceful grounds, creating a serene outdoor retreat in this vibrant historic setting.

The flat's first floor position provides both convenience and direct access to the private outdoor space, where residents can enjoy tranquil moments away from the bustling town centre. The terrace offers a perfect extension to the living space, ideal for morning coffee or evening relaxation while overlooking the well-maintained communal grounds.

Transport connections are exceptional, with both Cutty Sark DLR and Greenwich National Rail stations providing swift access to Canary Wharf, the City, and central London. The Thames Clipper service adds a scenic commuting option along the river.















## Chandlers Avenue

Approximate Gross Internal Area = 53 sq m / 571 sq ft

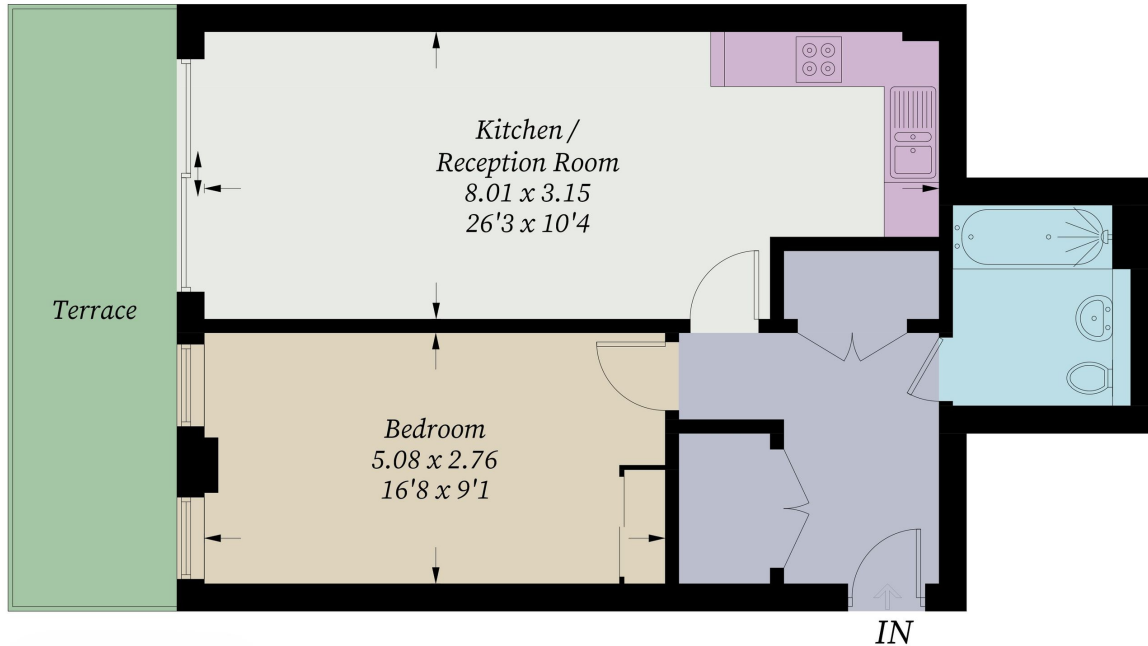


Illustration for identification purposes only, measurements are approximate, not to scale. Fourlabs.co © (ID1245395)