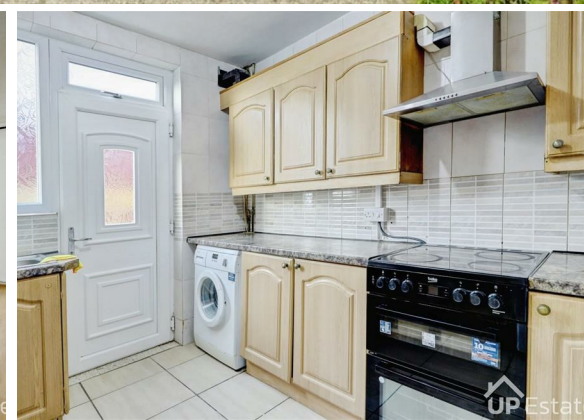




4 Bed
House - Terraced
located on The
Lindfield, Coventry

£1,200 PCM



 UP Estates



4



1



1



Property Address:
The Lindfield,
Coventry,
CV3 1FL

PROPERTY SUMMARY

AVAILABLE NOW - A rare opportunity to rent a four bedroom, mid terraced property offering plenty of space for a family. Comprising; Hall, Kitchen, Lounge/Diner, Four Bedrooms and a Family Bathroom. Garden with storage to the rear and an open green to the front. CALL NOW TO VIEW!



CONTACT

Up Estates
6 Orchard Court
Binley Business Park
Coventry
Warwickshire
CV3 2TQ

E: lettings@upestates.co.uk
T: 024 7771 0780
www.upestates.co.uk