



NIELD ROAD

HAYES, UB3 1SF

£629,950
FREEHOLD

Nestled on the charming Nield Road in Hayes, this delightful four bedroom mid terrace house offers a perfect blend of comfort and convenience. Spanning an impressive 1,450 square feet, this property has been thoughtfully extended to provide a spacious kitchen and dining area, ideal for family gatherings and entertaining guests.

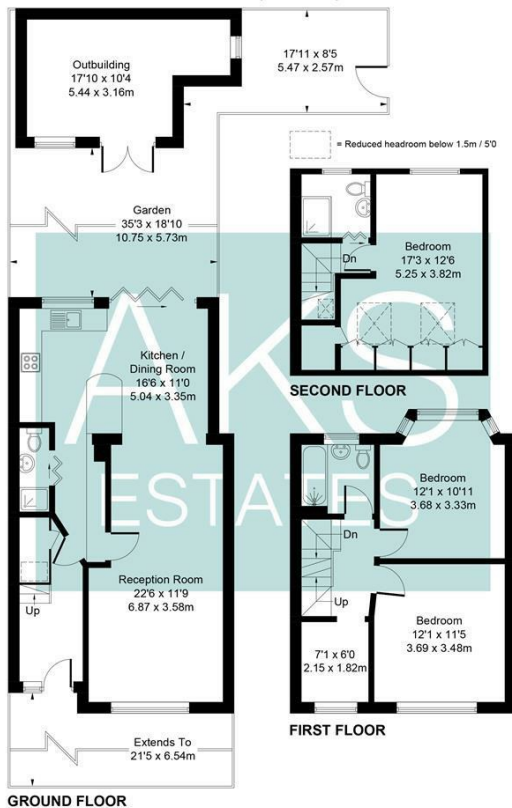
The home features a welcoming reception room that sets the tone for the rest of the house, providing a warm and inviting space to relax. With three well appointed bathrooms, morning routines will be a breeze, ensuring ample facilities for the entire family.

One of the standout features of this property is its prime location. Situated within walking distance of Hayes and Harlington Station, residents will benefit from easy access to the Elizabeth Line, making commuting to central London and beyond both quick and convenient.

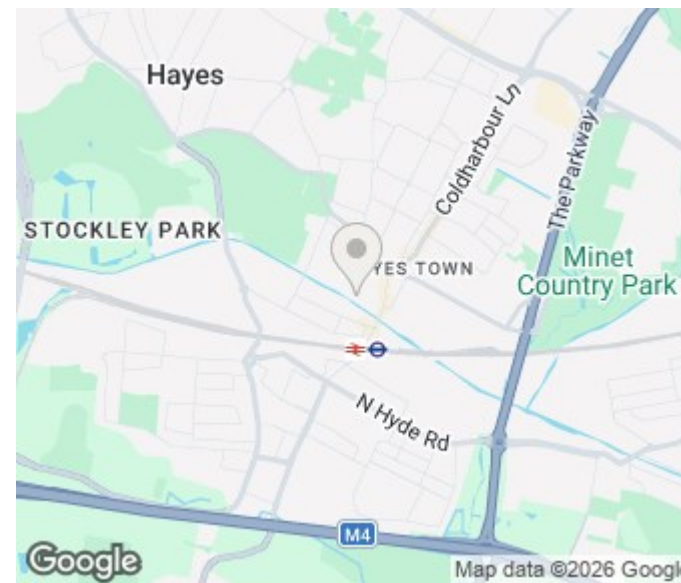


Nield Road

Approximate Gross Internal Area = 1291 sq ft / 119.9 sq m
 Outbuilding = 159 sq ft / 14.8 sq m
 Total = 1450 sq ft / 134.7 sq m



Not to Scale. Produced by © Vizion Property Marketing 2026
 For Illustrative Purposes Only.



Energy Efficiency Rating		Current	Potential
Very energy efficient - lower running costs			
(92 plus) A			
(81-91) B			
(69-80) C			
(55-68) D		67	81
(39-54) E			
(21-38) F			
(1-20) G			
Not energy efficient - higher running costs			
England & Wales		EU Directive 2002/91/EC	

Agents Note: Whilst every care has been taken to prepare these particulars, they are for guidance purposes only. All measurements are approximate and are for general guidance purposes only and whilst every care has been taken to ensure their accuracy, they should not be relied upon and potential buyers/tenants are advised to recheck the measurements

Heston
 131A Heston Road
 Hounslow
 TW5 0RF

020 8059 0595
 shiv@aksestates.co.uk
 aksestates.co.uk

