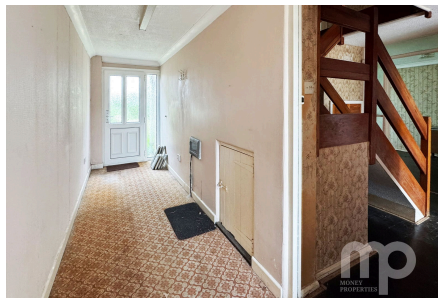


Rothbury Road, Wymondham, NR18

Offers In Region Of £200,000

3 1 2



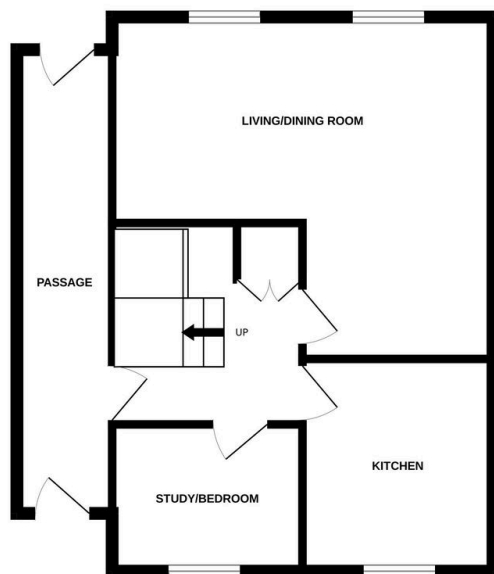
Moneyproperties bring to market this two/three-bedroom link-detached property requiring a full renovation and offering huge potential. The property is conveniently located within ease of access to all local schools, amenities, and bus routes. The accommodation comprises of a side entrance passage, open plan I-shaped living room/diner, kitchen, and versatile study which could double as a third bedroom. To the upstairs comes two double bedrooms and a bathroom. Outside the property sits on a generous plot with a spacious rear garden backing onto the school playing fields, single garage and off-road parking.

Tenure: Freehold EPC: E Council Tax: C

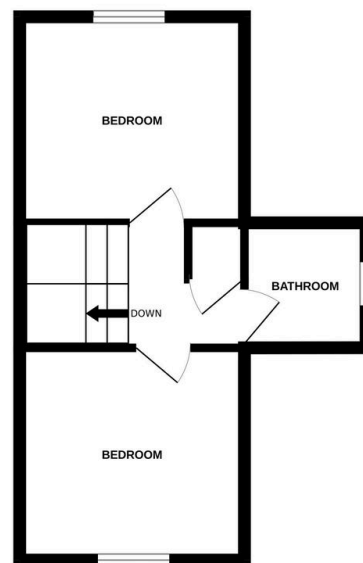
Key Features

- Two/three bedroom link-detached property
- Conveniently located for access to local schools, amenities, bus routes and the town centre
- 18ft L-shaped living room/diner
- Single garage with off-road parking
- Must be viewed to fully appreciate the potential
- Requires a full renovation but comes with huge potential
- Two double bedrooms upstairs with a single study/bedroom downstairs
- Spacious rear garden backing onto the school playing fields
- Offered with no onward chain
- See our full online listing for further details including flood risk, broadband speed and other material information

GROUND FLOOR



1ST FLOOR



Whilst every attempt has been made to ensure the accuracy of the floorplan contained here, measurements of doors, windows, rooms and any other items are approximate and no responsibility is taken for any error, omission or mis-statement. This plan is for illustrative purposes only and should be used as such by any prospective purchaser. The services, systems and appliances shown have not been tested and no guarantee as to their operability or efficiency can be given.
Made with Metropix ©2025