



BB

769 Chigwell Road, Woodford Green

Woodford Green

Guide Price £600,000



B
BOWDEN
BRADLEY

769 Chigwell Road

Woodford Green

Council Tax band: D

Tenure: Freehold

EPC Energy Efficiency Rating: D

EPC Environmental Impact Rating:

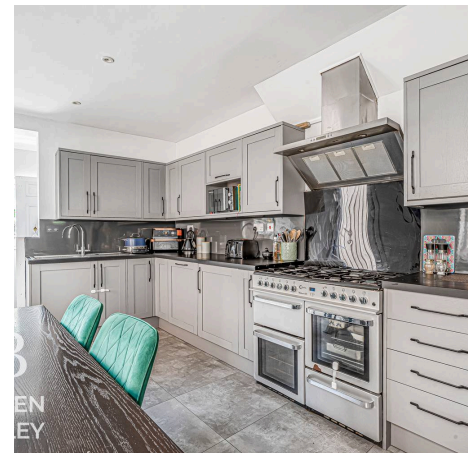
- Guide Price - £600,000 - £625,000
- 3 Double Bedroom Mid Terrace Home
- 3 Large Reception Rooms
- Landscaped Garden
- Views Over Woodlands
- Immaculate Condition Throughout
- Boasting Original Victorian Features
- Sought After Pocket
- Catchment Area For West Hatch High School
- Modern & Sleek Kitchen
- Downstairs WC
- Potential to Extend to Loft with two Bedrooms and Bathroom (STPP)



B
EN
BY



B
EN
BY



B
EN
BY



Living Room

14' 0" x 11' 4" (4.26m x 3.45m)

Family Room

11' 9" x 9' 4" (3.58m x 2.84m)

Kitchen/Diner

21' 10" x 10' 4" (6.65m x 3.14m)

WC

3' 3" x 3' 9" (0.99m x 1.14m)

Bedroom

14' 0" x 15' 0" (4.26m x 4.57m)

Bedroom

15' 7" x 9' 8" (4.75m x 2.95m)

Bedroom

11' 5" x 9' 5" (3.48m x 2.87m)

Bathroom

6' 4" x 6' 6" (1.93m x 1.99m)

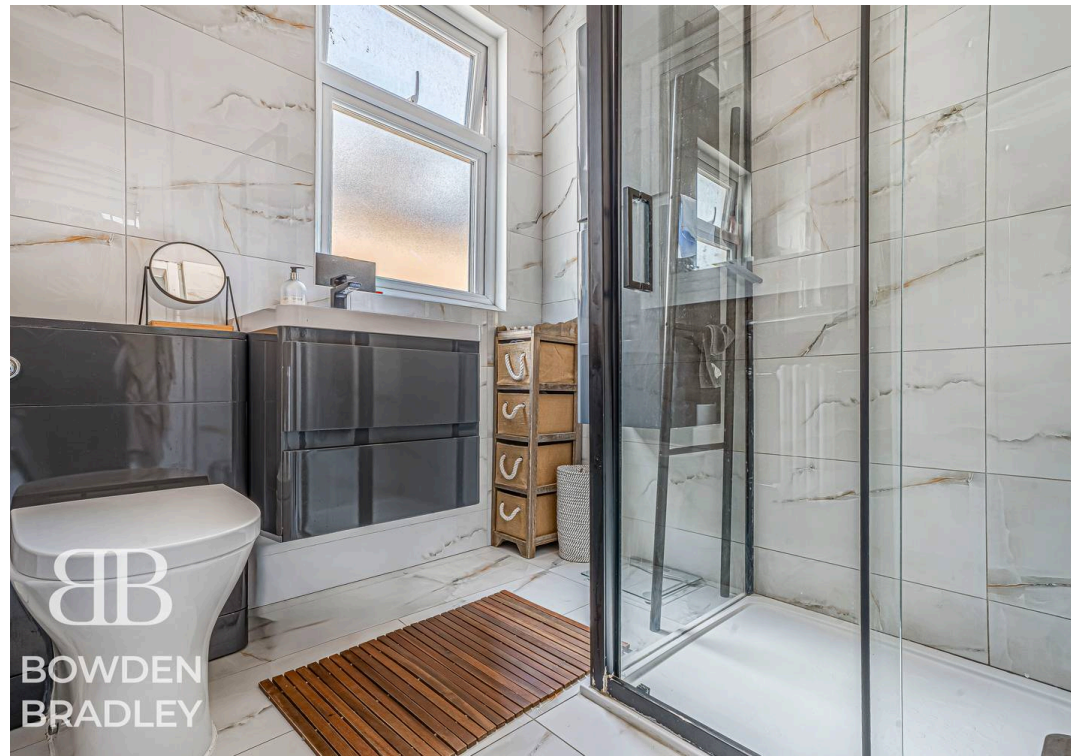
Loft

15' 3" x 15' 7" (4.65m x 4.75m)

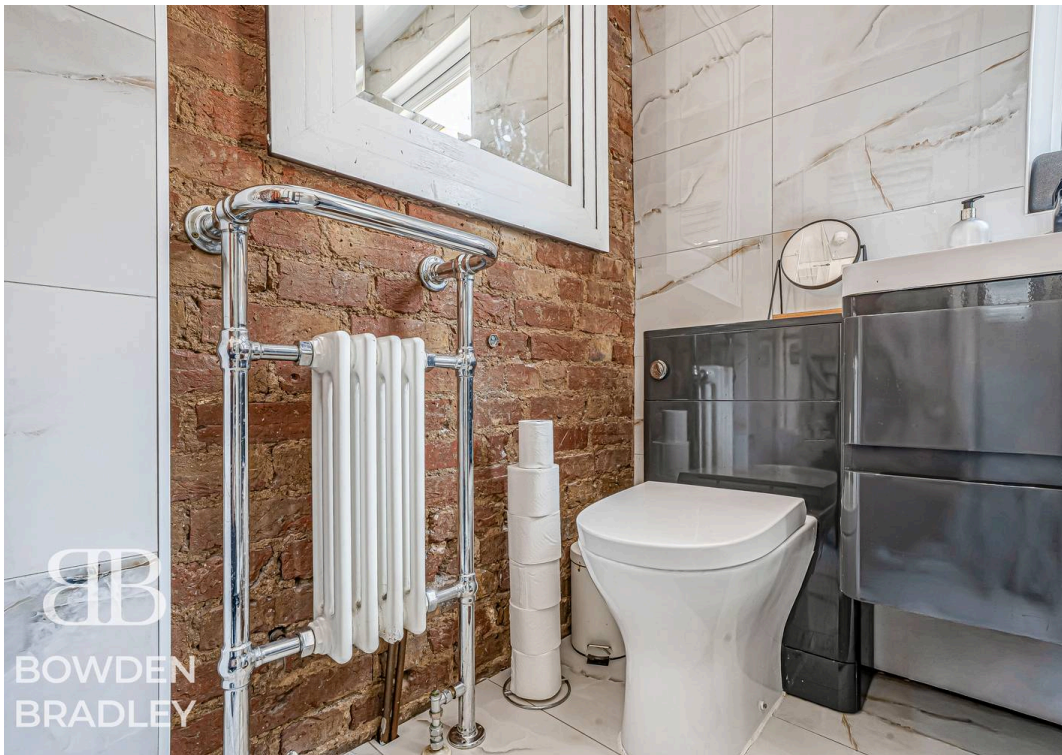




BB
BOWDEN
BRADLEY



BB
BOWDEN
BRADLEY



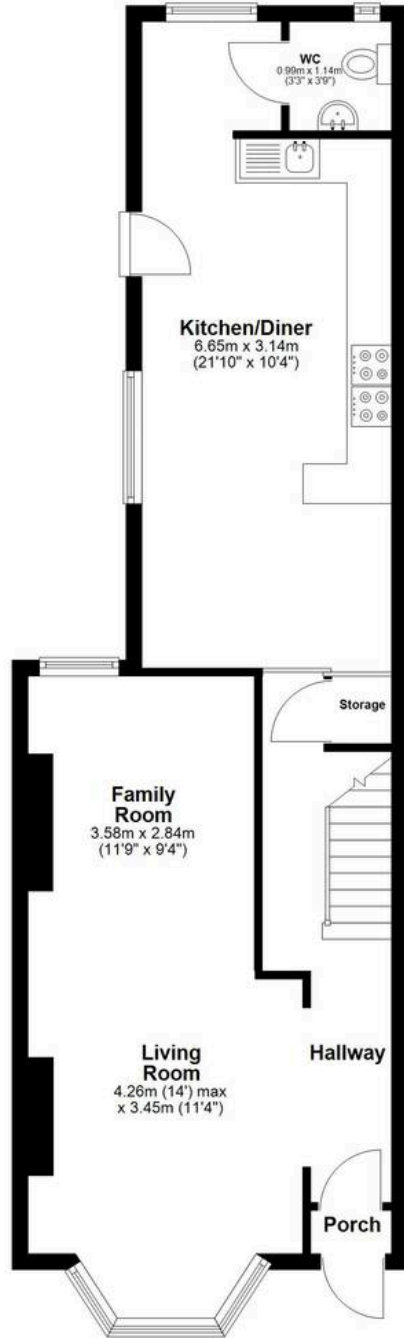
BB
BOWDEN
BRADLEY



BB
BOWDEN
BRADLEY

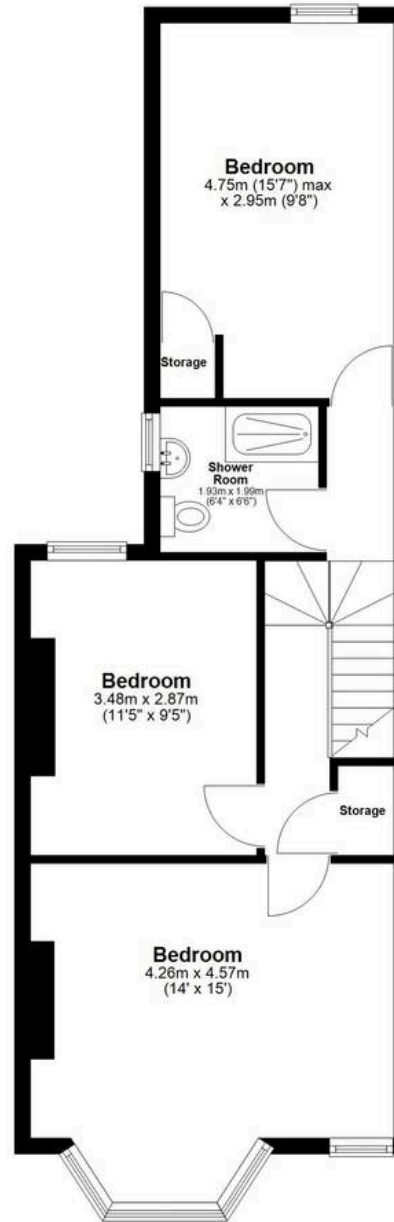
Ground Floor

Approx. 59.4 sq. metres (639.5 sq. feet)



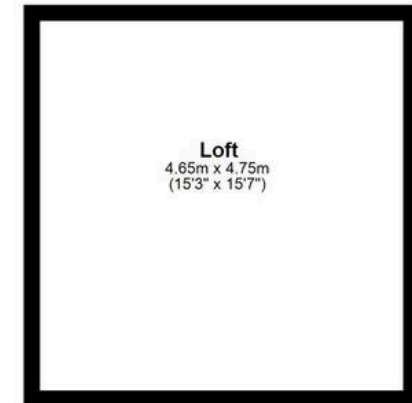
First Floor

Approx. 54.2 sq. metres (583.6 sq. feet)



Second Floor

Approx. 22.1 sq. metres (237.6 sq. feet)



Total area: approx. 135.7 sq. metres (1460.7 sq. feet)



Bowden Bradley

Bansal House, Bracken Industrial Estate, 185 Forest Road - IG6 3HX

02080593593 · info@bowdenbradley.co.uk · bowdenbradley.co.uk/