



Lyford Road

Wandsworth, SW18

£1,500 per month
(£346 per week)

A well-presented top floor Victorian conversion flat set within an attractive property close to Wandsworth Common in a popular residential area.

CHESTERTONS



Lyford Road

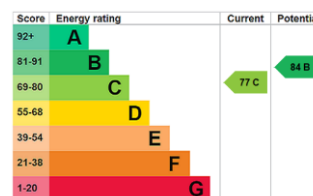
Wandsworth, SW18

- A well-presented top floor Victorian conversion flat
- Set within an attractive property close to Wandsworth Common in a popular residential area
- Bright reception room with wooden flooring and space for a dining table,
- Modern galley style kitchen
- Double bedroom
- Modern bathroom
- Communal gardens
- Moments from Wandsworth Common and the amenities of Bellevue Road



A well-presented top floor Victorian conversion flat set within an attractive property close to Wandsworth Common in a popular residential area. The accommodation comprises a bright reception room with wooden flooring and space for a dining table, a modern galley style kitchen, a double bedroom, a modern bathroom and communal gardens. This delightful property is located on Lyford Road, a beautiful tree-lined street that runs off Routh Road and is parallel to Trinity Road and is moments from Wandsworth Common and the amenities of Bellevue Road. Wandsworth Common and Earlsfield mainline stations are both within walking distance of this delightful flat and numerous bus services run along Trinity Road a couple of minutes walk away.

Minimum Term: 12 months
Deposit Required: £1,730.77
Local Authority: Wandsworth Council
Council Tax Band: C
EPC Rating: C
Furnished



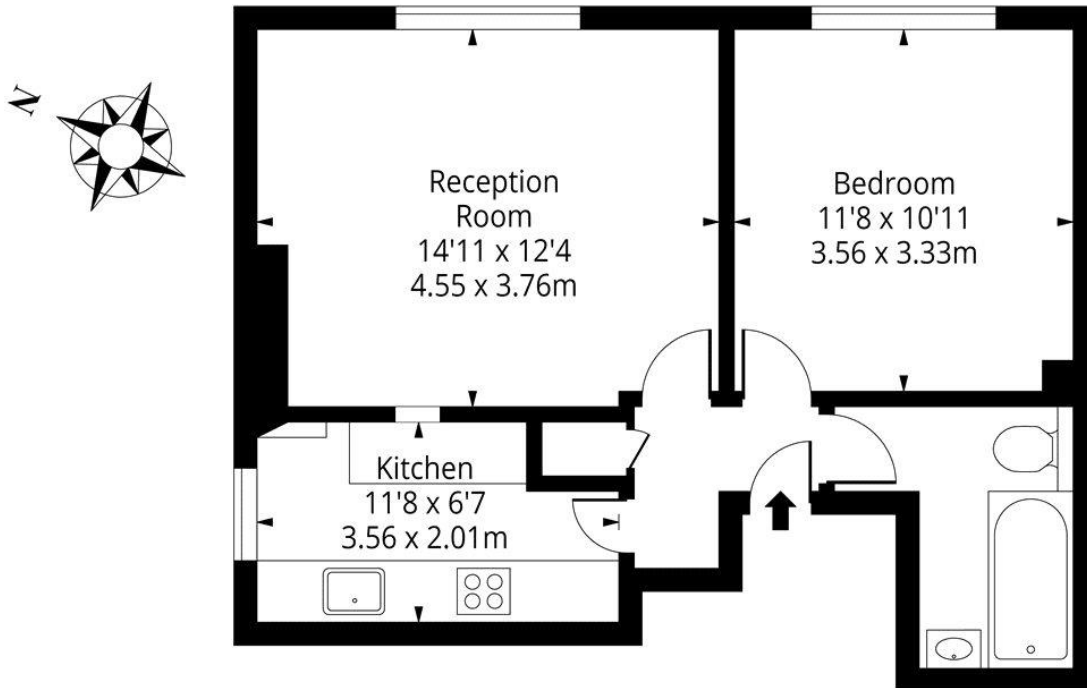
Chestertons Wandsworth Common Lettings

chestertons.co.uk

Additional tenant charges apply (fees apply to non-AST tenancies only)
 Tenancy Agreement Fee: £300
 References per Tenant/Guarantor: £60
 Inventory check (approx. £100 – £250 inc. VAT)
chestertons.co.uk/property-to-rent/applicable-fees



Lyford Road, SW18



Second Floor

Approx Gross Internal Area **484 Sq Ft - 44.96 Sq M**

For Illustration Purposes Only - Not To Scale

Ref: No. 33405

