



Belsize Road, NW6

£475,000

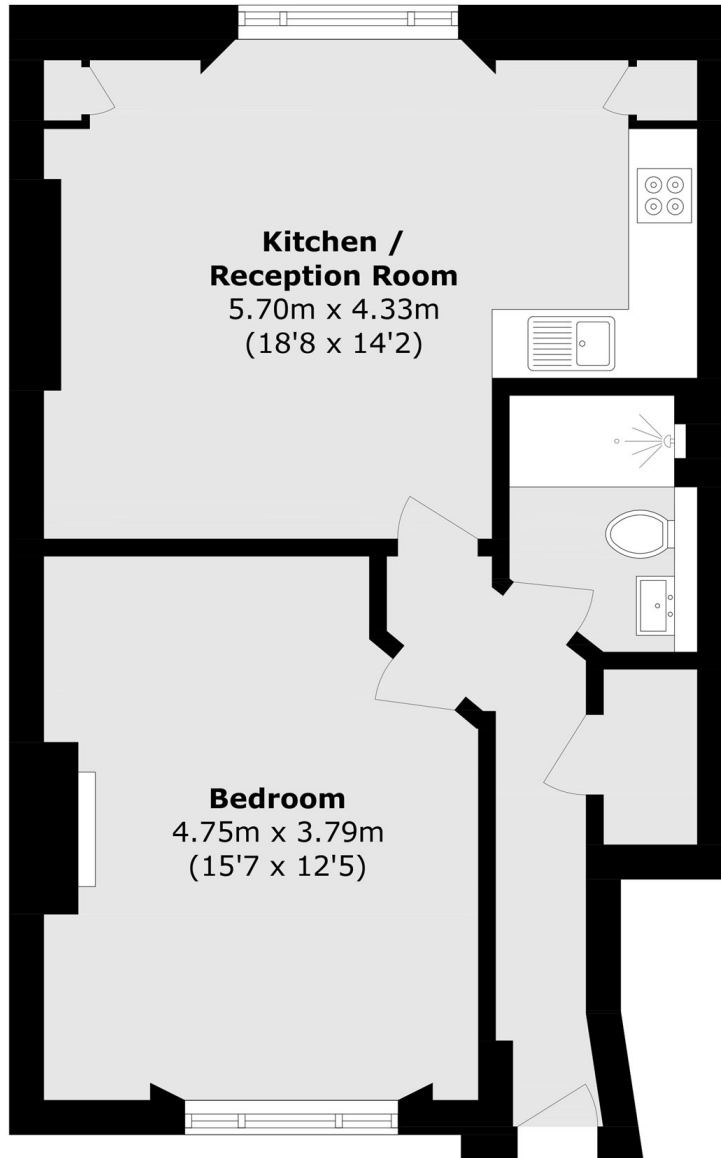
A beautifully refurbished one bedroom raised ground floor apartment finished to an exceptional standard, blending contemporary design with elegant period charm. The property features a stylish open plan living space, underfloor heating and an abundance of original character features. The property will also be sold with no onward chain.

Belsize Road is superbly located in South Hampstead, within easy reach of Swiss Cottage, West Hampstead and St John's Wood, offering a wide selection of cafés, restaurants and local amenities. Excellent transport links include South Hampstead Overground and nearby Jubilee, Metropolitan and Thameslink services. Primrose Hill, Regent's Park and Hampstead Heath are all close by.

Features

- One Bedroom
- Raised Ground Floor
- Victorian Conversion
- Recently Refurbished
- Underfloor Heating
- No Onward Chain

Belsize Road, London, NW6



Total area (approx.): 50.8 sq. m (546.8 sq. ft)